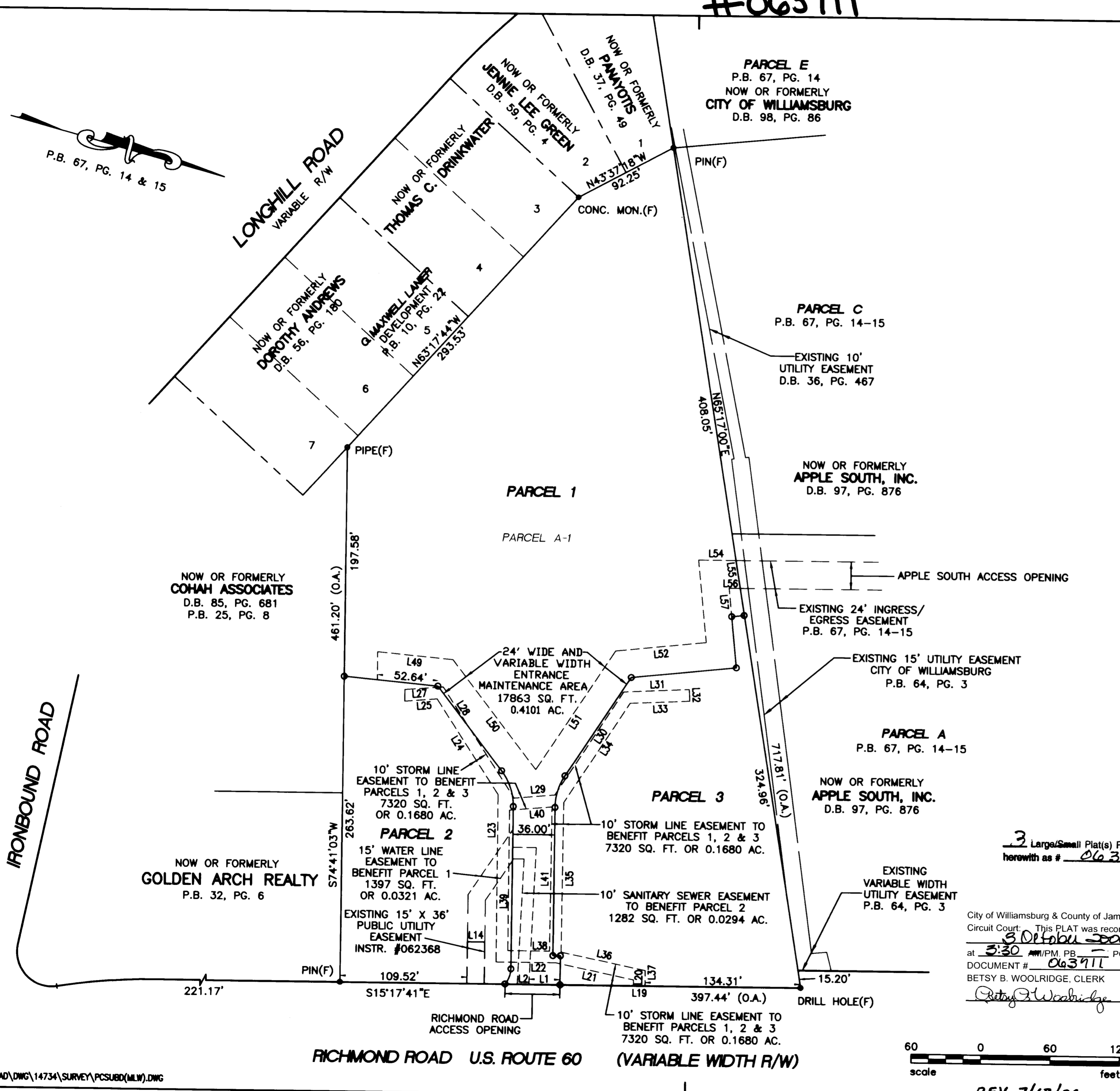


#063711

LINE TABLE		
LINE	LENGTH (FEET)	BEARING
L1	26.90	S15°17'41"E
L2	10.01	S15°17'41"E
L3	108.06	S77°01'04"W
L4	9.93	S15°17'08"E
L5	10.00	S74°42'51"W
L6	20.34	N15°17'08"W
L7	118.07	N77°01'04"E
L8	36.00	S74°42'19"W
L9	40.74	S74°42'19"W
L10	68.19	N71°32'08"W
L11	27.00	N74°42'51"E
L12	41.19	S71°32'08"E
L13	36.19	N74°42'19"E
L14	15.00	S15°17'41"E
L19	10.00	S15°17'41"E
L20	5.06	S74°36'24"W
L21	68.89	S03°42'12"E
L22	51.20	S15°17'07"E
L23	144.16	S74°35'25"W
L24	98.12	S41°26'30"W
L25	27.93	S19°51'19"E
L26	10.03	S74°42'51"W
L27	33.06	N19°51'19"W
L28	113.96	N41°26'30"E
L29	35.14	N20°25'41"W
L30	107.10	N72°20'25"W
L31	56.50	N18°07'12"W
L32	10.00	N71°52'48"E
L33	51.38	S18°07'12"E
L34	102.95	S72°20'25"E
L35	129.02	N74°53'08"E
L36	74.22	N03°42'12"W
L37	13.22	N74°36'24"E
L38	35.99	S15°17'07"E
L39	120.97	S74°35'25"W
L40	36.77	N20°25'41"W
L41	124.27	N74°53'08"E
L48	24.10	S74°42'51"W
L49	65.28	N10°01'43"W
L50	118.73	N36°58'03"E
L51	123.33	N72°08'02"W
L52	78.40	N21°18'56"W
L53	71.62	S68°41'04"W
L54	32.29	N15°22'00"W
L55	24.32	N65°17'00"E
L56	9.61	S15°22'00"E
L57	24.63	N68°41'04"E



3 Large/Small Plat(s) Recorded herewith as # 063711

City of Williamsburg & County of James City Circuit Court: This PLAT was recorded on 3 October 2006 at 3:30 AM/PM, PG. 1 DOCUMENT # 063711 BETSY B. WOOLRIDGE, CLERK

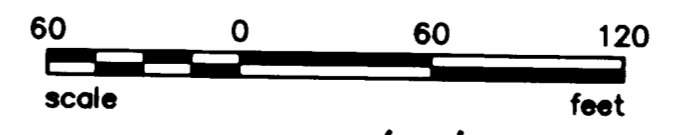
Betsy B. Woolridge Clerk



SUBMISSION OF PARCEL A-1 RESUBMISSION OF PARCEL A AND PARCEL B LECARNI CORP.

SCALE: 1" = 60' JANUARY 19, 2006 CITY OF WILLIAMSBURG, VIRGINIA

HORTON & DODD, P.C.
SURVEYORS, ENGINEERS & PLANNERS
300 GEORGE WASHINGTON HWY., N.
CHESAPEAKE, VIRGINIA 23325
(757) 467-4535 SURVEY@HPC.NET



REV. 7/17/06

SHEET 3 OF 3

F:\Acad\DWG\14734\SURVEY\PCSUBD\MLW.DWG, Model, 7/17/2006 4:31:15 PM, 1:60, MLW