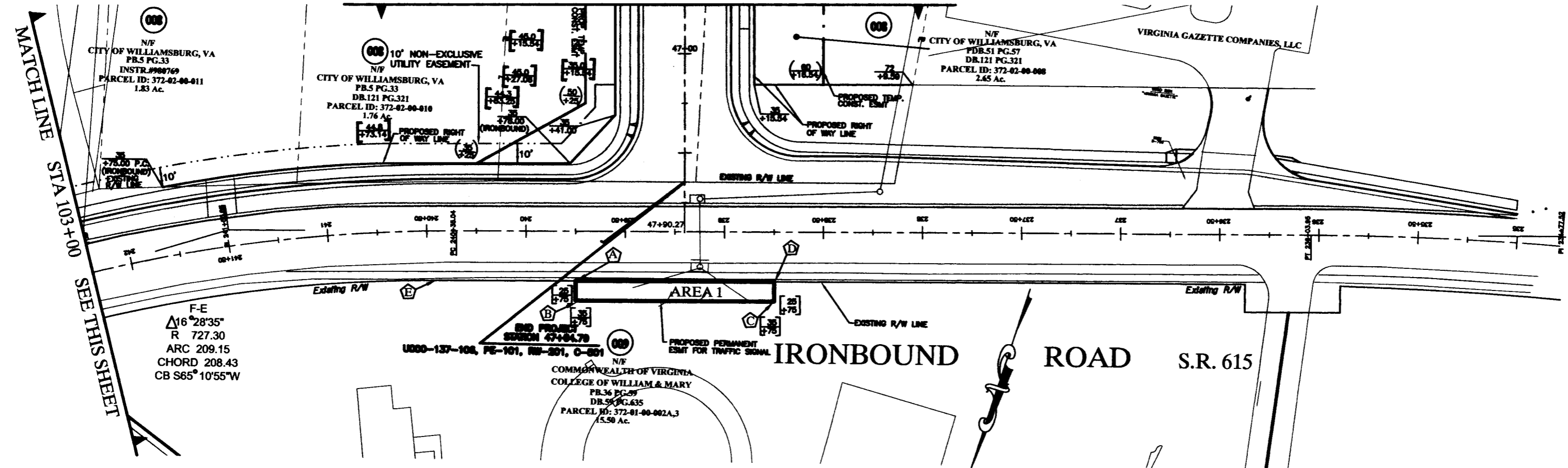
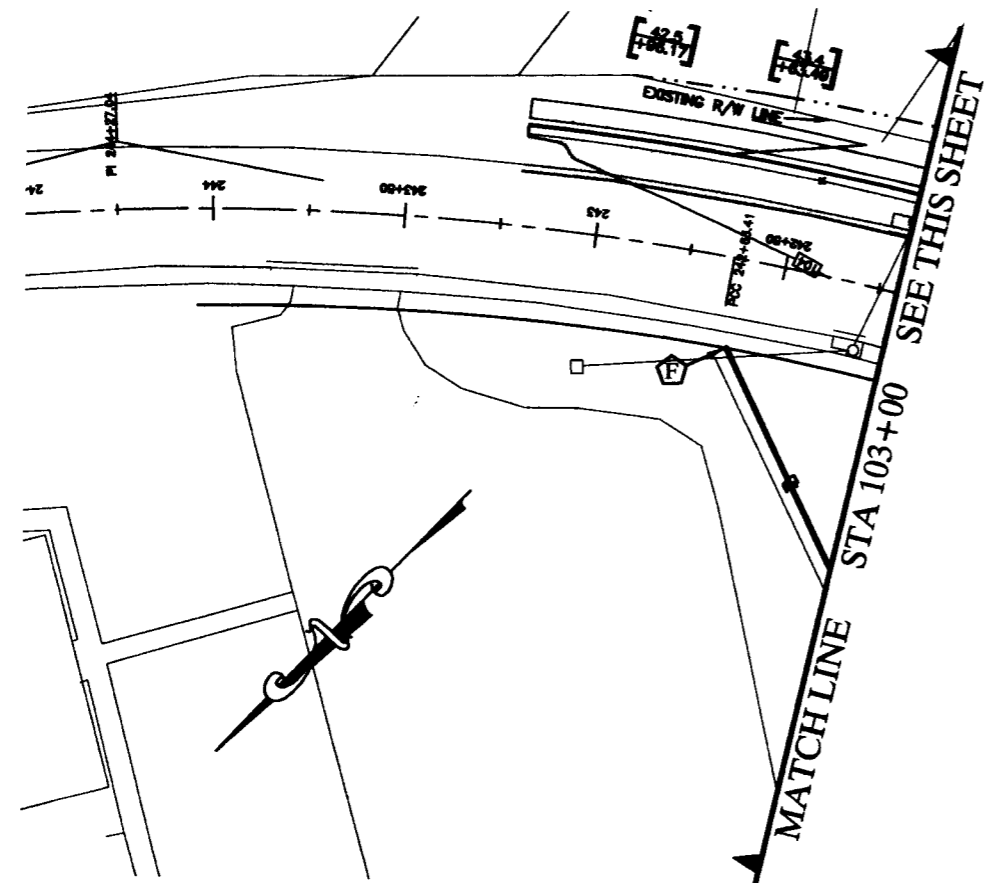


MATCH LINE STA 46+75 SEE SHEET RW-7



F-E
 $\Delta 16^\circ 28'35''$
 R 727.30
 ARC 209.15
 CHORD 208.43
 CB $S65^\circ 10'55''W$

MATCHLINE STA 103+00 SEE THIS SHEET



MATCHLINE STA 103+00 SEE THIS SHEET

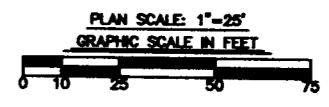
AREA 1		
TRAFFIC SIGNAL EASEMENT		
LINE	BEARING	DIST.
A-B	N16°34'48"W	10.00'
B-C	S73°25'12"W	100.00'
C-D	S16°34'48"E	10.00'
D-A	N73°25'12"E	100.00'
E-A	S73°25'12"W	70.20'
F-E	SEE CURVE DATA	

City of Williamsburg & County of James City
 Circuit Court: This PLAT was recorded on
September 28, 2006
 at 12:47 AM/PM. PB PG
 DOCUMENT # 063680
 BETSY B. WOOLRIDGE, CLERK
Betsy B. Woolridge Clerk

- [] PERMANENT UTILITY EASEMENT
- [] PERMANENT EASEMENT
- () TEMPORARY CONST. EASEMENT
- TEMPORARY ENTRANCE CONST. LIMITS
- C/F CUT/FILL

NOTE:
 FOR DRAINAGE DESCRIPTIONS, SEE SHEET C-8

Large/Small Plat(s) Recorded
 herewith as # 063680



#063680

LANDMARK
 Landscape Architecture • Environmental Scientists

NO.	DATE	REVISION	BY
1	4-14-06	ADD PERMITS FROM O&D	LFY
2	5-10-06	PER. TRAFFIC SIGNAL	LFY

REVISION	DATE	BY

RIGHT OF WAY PLAN
TREYBURN DRIVE
 CITY OF WILLIAMSBURG
 JAMES CITY COUNTY, VIRGINIA

Designed: AJR	Date: 4-8-05
Checked: SAR	Scale: 1"=25'
File No./Drawn: HWJ	O&D File name: RWPLAN_SHTS
Project number: 2002127-000.05	Dep. File No.: 15837W

55 OF 61
 55 OF 61 RW-6