

#063611

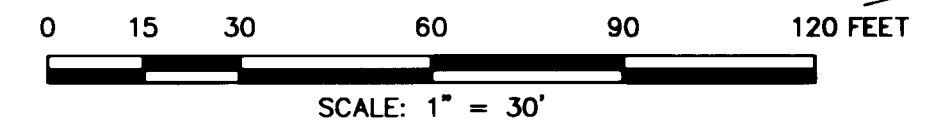
PLAT OF DEDICATION AND BOUNDARY LINE ADJUSTMENT
 CITY OF WILLIAMSBURG, VIRGINIA
 FEBRUARY 23, 2006

CURVE TABLE

NO.	RADIUS	DELTA	ARC	TANGENT	CHORD	CHORD BRG.	
1	783.30'	09°55'35"	135.70'	68.02'	135.53'	N09°36'35"W	RT
2	3317.74'	01°27'32"	84.48'	42.24'	84.48'	N05°22'34"W	LT
3	3317.74'	01°29'00"	85.89'	42.95'	85.89'	N06°50'50"W	LT
4	5805.65'	01°11'26"	120.64'	60.32'	120.63'	S31°06'19"E	LT
5	5805.65'	03°21'50"	340.86'	170.43'	340.82'	S33°22'57"E	LT
6	200.00'	30°59'19"	108.17'	55.44'	106.86'	N53°38'26"W	LT
7	202.50'	39°13'01"	138.60'	72.14'	135.91'	N88°44'17"W	LT

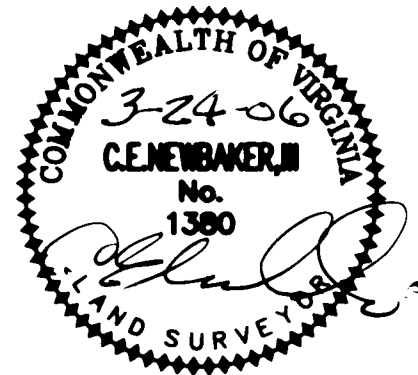
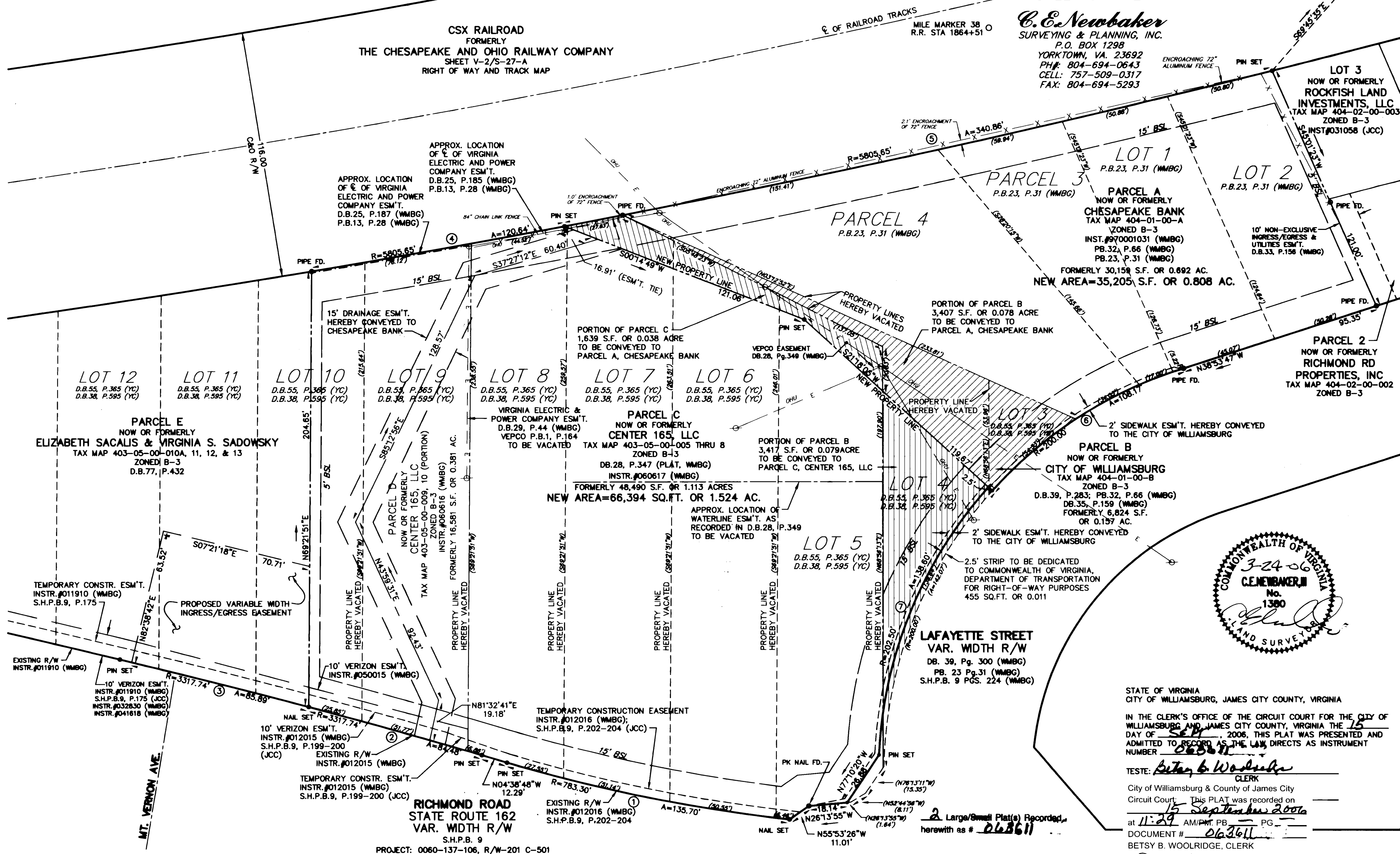
TOTAL AREA OF SUBDIVISION = 102,054 SQ.FT. OR 2.343 ACRES

- LEGEND:**
- ⊕ UTILITY POLE
 - E- OVERHEAD UTILITIES
 - PIN/NAIL SET
 - NAIL/PIN/PIPE FOUND



SHEET 2 OF 2

C. E. Newbaker
 SURVEYING & PLANNING, INC.
 P.O. BOX 1298
 YORKTOWN, VA. 23692
 PH#: 804-694-0643
 CELL: 757-509-0317
 FAX: 804-694-5293



STATE OF VIRGINIA
 CITY OF WILLIAMSBURG, JAMES CITY COUNTY, VIRGINIA

IN THE CLERK'S OFFICE OF THE CIRCUIT COURT FOR THE CITY OF WILLIAMSBURG AND JAMES CITY COUNTY, VIRGINIA THE 15 DAY OF SEP 2006, THIS PLAT WAS PRESENTED AND ADMITTED TO RECORD AS THE LAW DIRECTS AS INSTRUMENT NUMBER 063611

TESTE: Betsy B. Woolridge
 CLERK
 City of Williamsburg & County of James City
 Circuit Court. This PLAT was recorded on
15 September 2006
 at 11:29 AM/P.M. PG. _____
 DOCUMENT # 063611
 BETSY B. WOOLRIDGE, CLERK
Betsy B. Woolridge Clerk