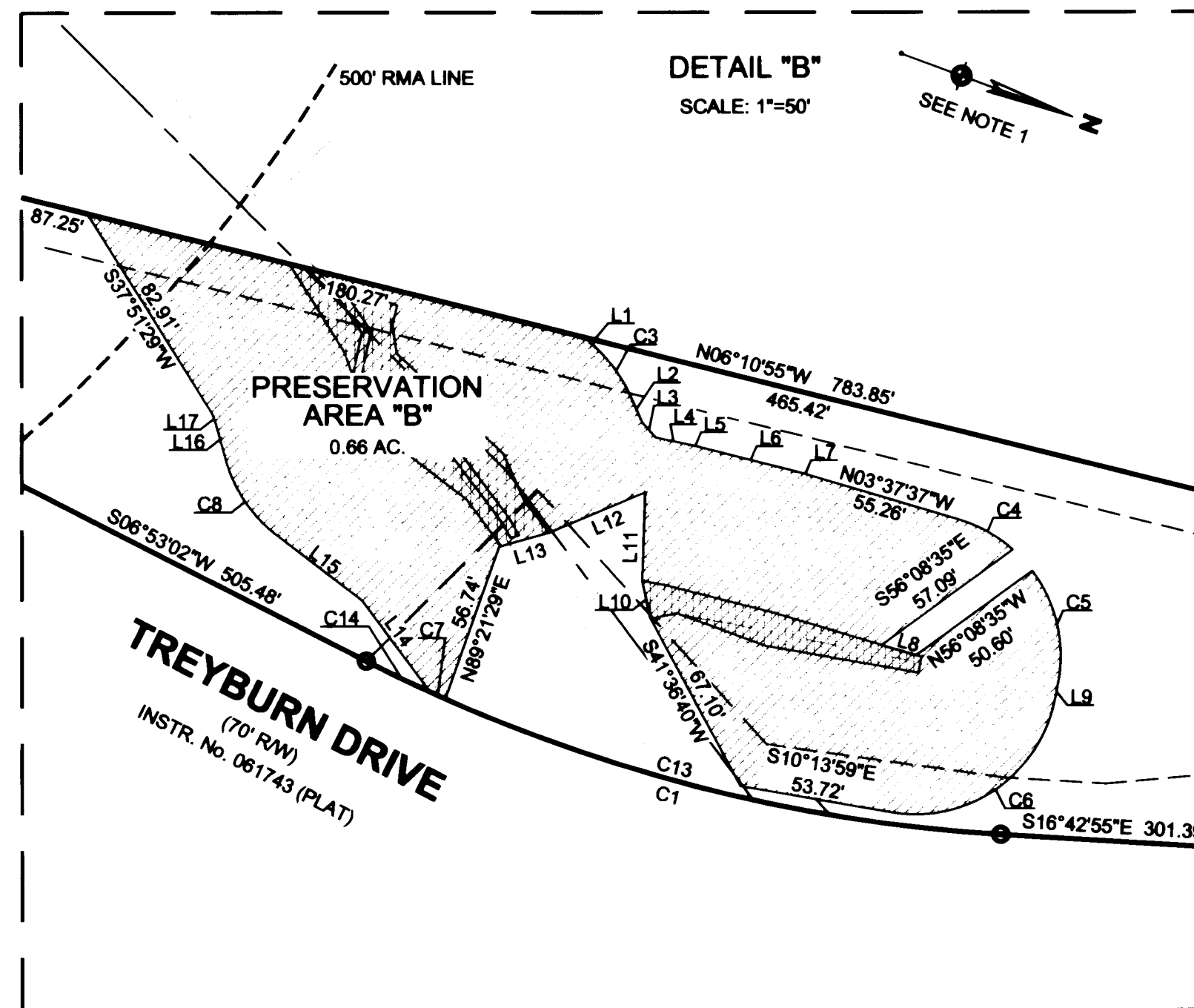
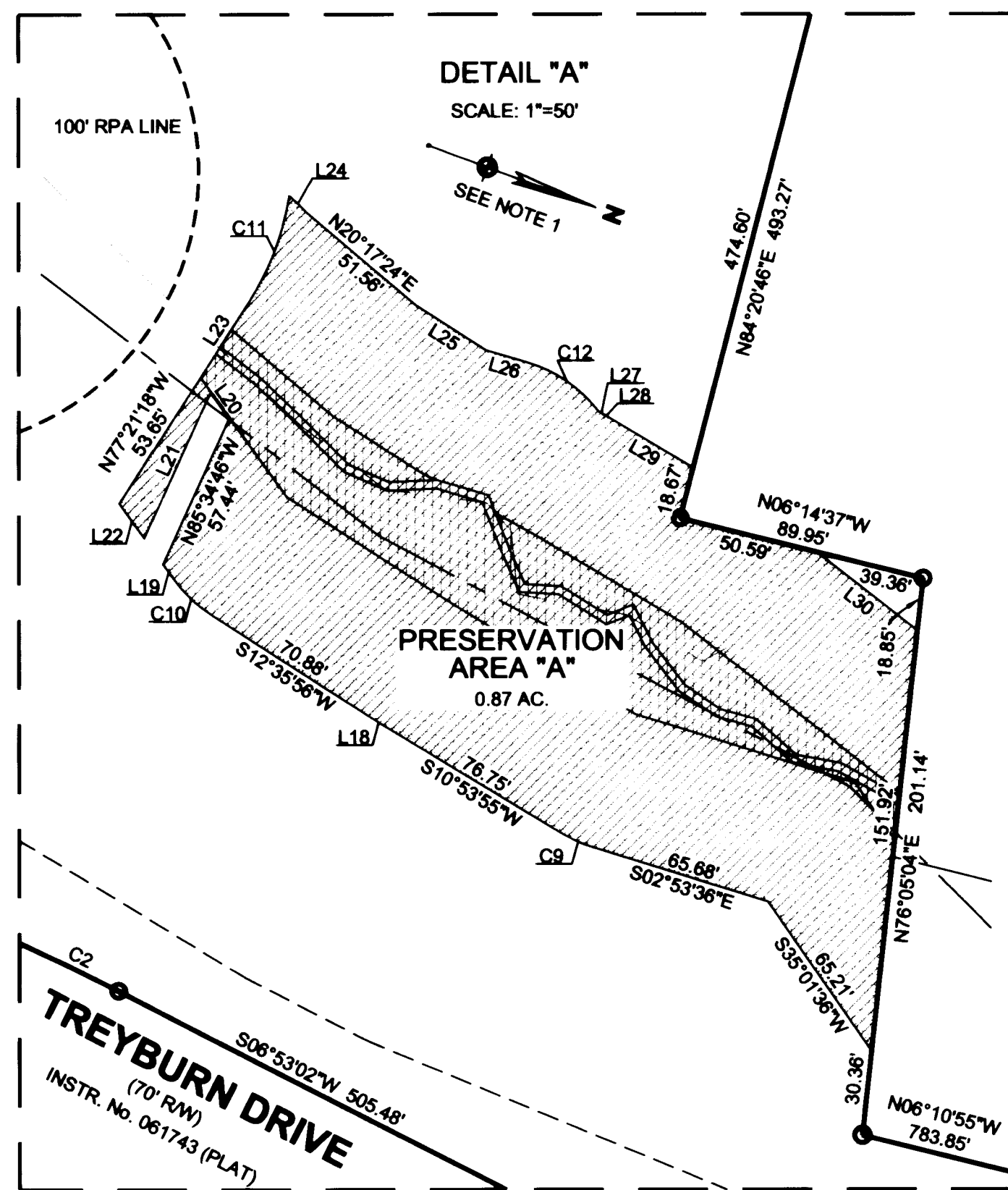


# #062546

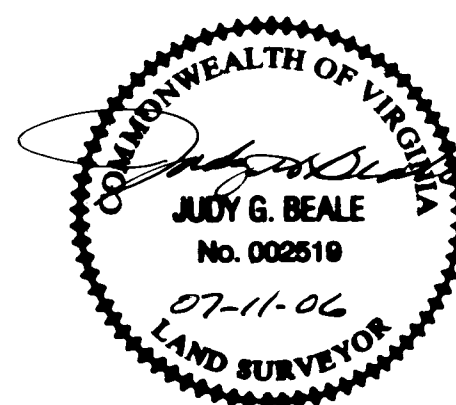
CURVE TABLE		
CURVE	RADIUS	LENGTH
C1	565.00	232.72'
C2	885.00	324.36'
C3	50.00	19.93'
C4	50.00	21.84'
C5	50.00	42.00'
C6	50.00	77.39'
C7	565.00	5.80'
C8	50.00	35.79'
C9	50.00	12.04'
C10	50.00	18.59'
C11	100.00	41.87'
C12	50.00	32.07'
C13	565.00	201.96'
C14	565.00	24.96'

LINE TABLE		
LINE	BEARING	LENGTH
L1	N22°59'30"E	5.99'
L2	N45°49'41"E	10.62'
L3	N28°02'11"E	6.92'
L4	N08°20'00"W	12.85'
L5	N07°26'36"W	2.69'
L6	N05°54'12"W	37.63'
L7	N04°45'54"W	1.99'
L8	N03°37'37"W	12.60'
L9	N81°05'07"E	5.71'
L10	S58°03'22"W	13.25'
L11	S71°47'26"W	30.97'
L12	S42°57'23"E	36.42'
L13	S35°40'28"E	18.42'
L14	S33°06'08"W	40.15'
L15	S17°17'13"W	36.10'
L16	S54°15'36"W	11.65'
L17	S50°42'44"W	3.47'
L18	S11°44'55"W	1.48'
L19	S33°53'57"W	6.77'
L20	S33°53'57"W	11.49'
L21	S85°34'46"E	57.44'
L22	S33°53'57"W	15.24'
L23	N77°21'18"W	32.09'
L24	N24°23'35"E	8.64'
L25	N12°24'32"E	30.13'
L26	N03°51'13"W	15.37'
L27	N08°21'18"E	2.02'
L28	N09°26'45"E	1.90'
L29	N10°31'56"E	35.40'
L30	N17°48'03"E	45.85'



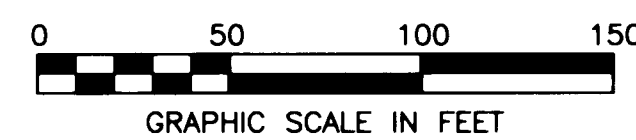
2 Large/Small Plat(s) Recorded  
hereunder as # 062546

City of Williamsburg & County of James City  
Circuit Court: This PLAT was recorded on  
17 July 2006  
at 12:24 AM/PM. PG. PG  
DOCUMENT # 062546  
BETSY B. WOOLRIDGE, CLERK  
*Betsy B. Woolridge* Clerk



### LEGEND

- IRON PIPE FOUND
- IRON PIN FOUND
- CAL DITCH
- CAL CREEK
- ▨ PRESERVATION AREA
- ▨ JURISDICTIONAL WETLANDS AND STREAM CHANNEL
- ▨ BUFFER AREA



SEE SHEET 1 OF 2 NOTES & CERTIFICATIONS

EXHIBIT  
OF  
**PRESERVATION AREAS**  
PER DECLARATION OF RESTRICTIONS  
PROPERTY OF  
**CITY OF WILLIAMSBURG, VA**  
(D.B. 121 PG. 321, INSTR. No. 980769, INSTR. No. 031671 & INSTR. No. 040340)  
**WILLIAMSBURG, VIRGINIA**

<p><b>WOOLPERT, INC.</b> 415 PORT CENTRE PARKWAY SUITE 101 PORTSMOUTH, VA 23704-4924 TEL: 757.399.6882 FAX: 757.399.6869</p>	DES. N/A	JOB NO. 62896.04
	DRN. RDA	SCALE 1"=50'
	CKD. JGB	DATE 7-06-06
		SHEET NO. <u>2</u> OF <u>2</u>
		FILE NO. <u>wetlands ease.dwg</u>

VIRGINIA:

IN THE CLERK'S OFFICE OF THE CIRCUIT COURT OF THE CITY OF WILLIAMSBURG, VIRGINIA ON THIS 17 DAY OF July, 2006, THIS PLAT WAS RECEIVED AND ADMITTED TO RECORD IN MAP BOOK      AT PAGE      AT 12:24 P.M.

TESTE: *Betsy B. Woolridge* CLERK  
*Betsy B. Woolridge* Clerk