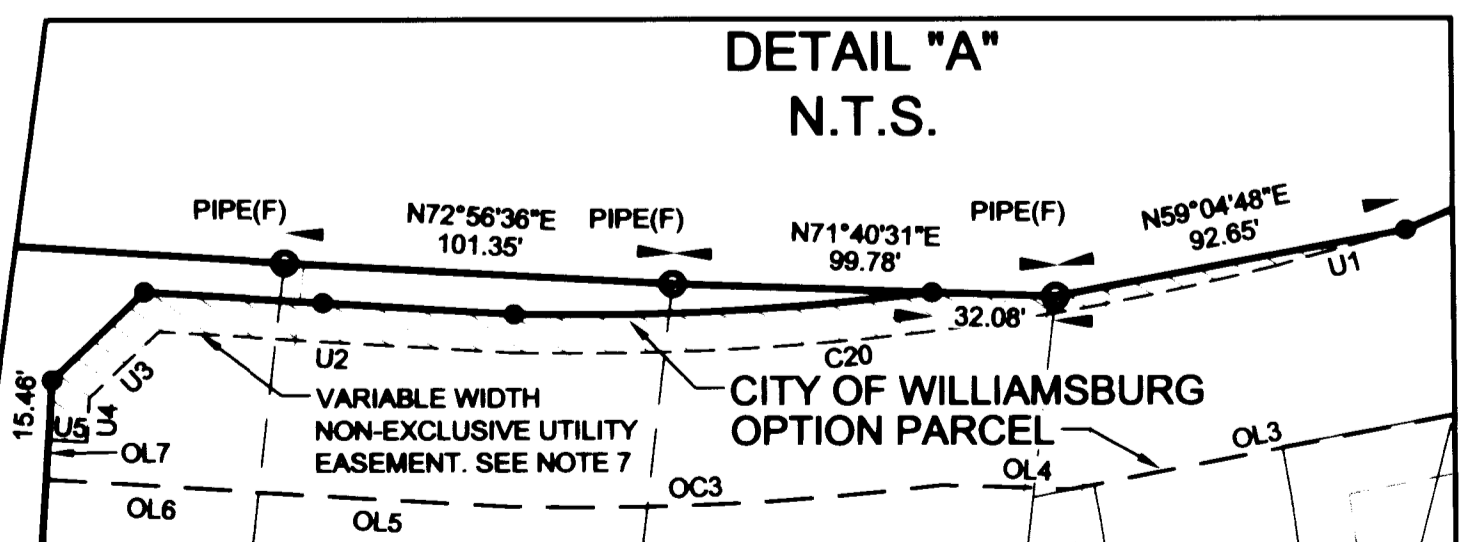
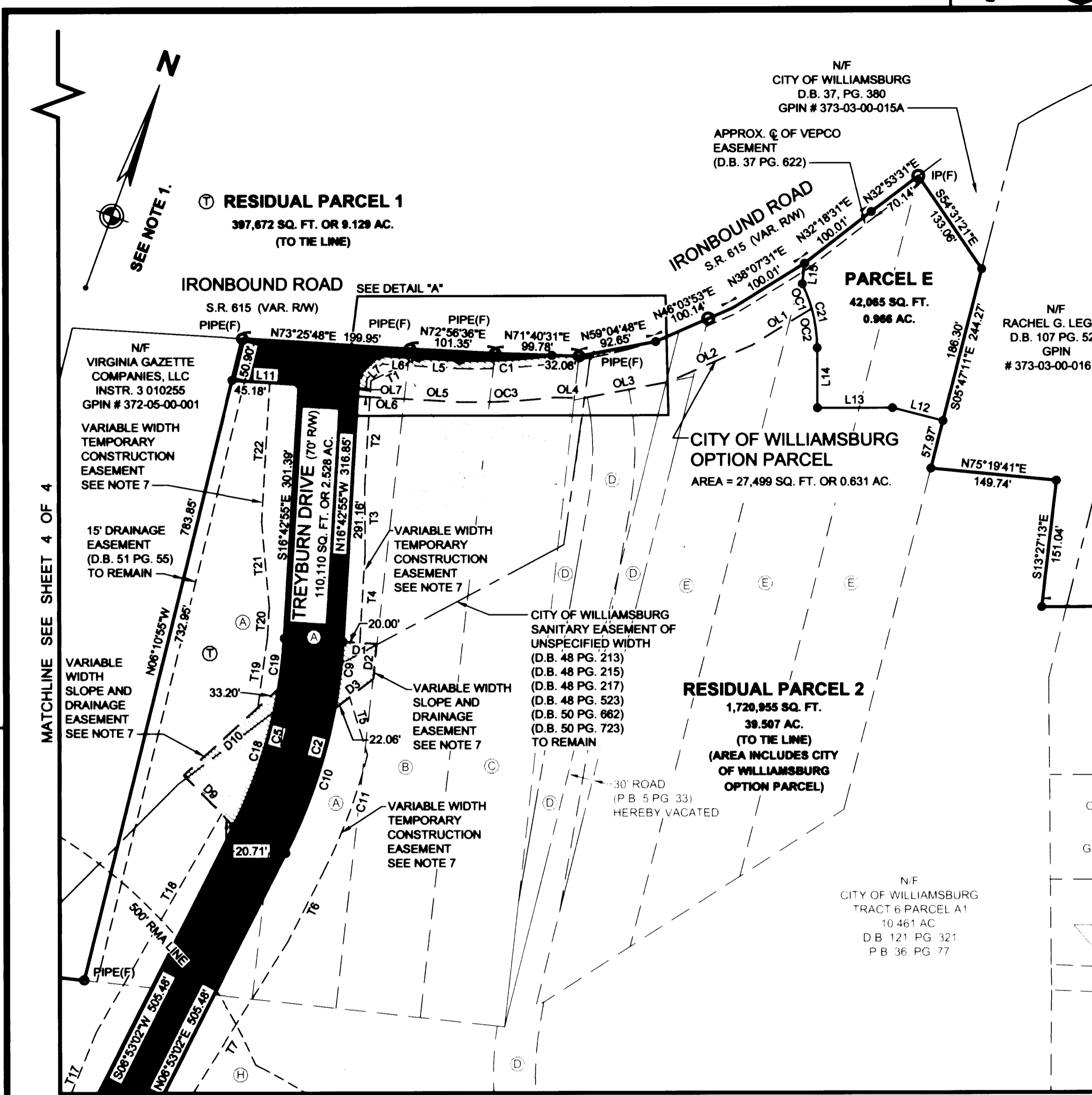
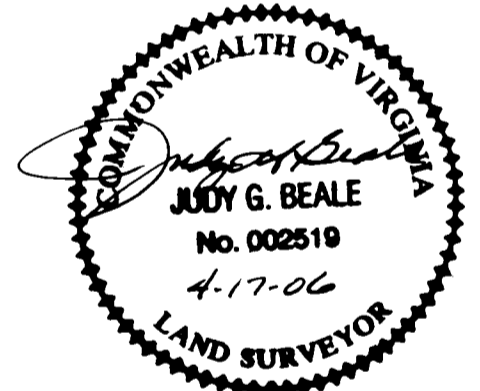


#061743

CITY OF WILLIAMSBURG OPTION PARCEL LINE TABLE			CITY OF WILLIAMSBURG OPTION PARCEL CURVE TABLE					
LINE	BEARING	LENGTH	CURVE	RADIUS	LENGTH	DELTA	CHORD	CH BEARING
OL1	S38°07'31"W	82.54'	OC1	175.00'	31.34'	10°15'48"	31.31'	S 40°57'25" E
OL2	S46°03'53"W	109.31'	OC2	175.00'	47.54'	15°33'49"	47.39'	S 28°02'37" E
OL3	S59°04'48"W	103.87'	OC3	773.08'	113.64'	8°25'20"	113.54'	S 67°05'27" W
OL4	S71°40'31"W	33.69'						
OL5	S73°11'23"W	50.80'						
OL6	S73°13'40"W	69.72'						
OL7	N16°14'25"W	25.69'						

AREA TABLE		
PARCEL	SQ. FT.	ACREAGE
CITY OF WILLIAMSBURG OPTION PARCEL	27,499	0.631

- (A) N/F CITY OF WILLIAMSBURG TRACT 8A P.B. 5 PG. 33 D.B. 121 PG. 321 4.497 AC GPIN # 372-02-00-008.9
- (B) N/F CITY OF WILLIAMSBURG TRACT 8B P.B. 5 PG. 33 D.B. 121 PG. 321 1.829 AC GPIN # 372-02-00-010
- (C) N/F CITY OF WILLIAMSBURG TRACT 11 P.B. 5 PG. 33 INDTR # 980769 1.830 AC GPIN # 372-02-00-011
- (D) N/F CITY OF WILLIAMSBURG TRACT 8 P.B. 36 PG. 77 D.B. 121 PG. 321 2.612 AC GPIN # 372-04-00-G.H.X
- (E) N/F CITY OF WILLIAMSBURG TRACT 7 D.B. 121 PG. 321 P.B. 5 PG. 33 5.579 AC GPIN # 373-03-00-014.15
- (F) N/F CITY OF WILLIAMSBURG TRACT 5 D.B. 121 PG. 321 1.092 AC GPIN # 373-06-00-A.B.C.D
- (G) N/F CITY OF WILLIAMSBURG TRACT 22 D.B. 51 PG. 39 D.B. 121 PG. 321 0.666 AC GPIN # 373-04-01-08.9.10
- (H) N/F CITY OF WILLIAMSBURG TRACT 6 PARCEL A2 D.B. 121 PG. 321 P.B. 36 PG. 77 20.20 AC (TO THE LINE) GPIN # 372-04-00



MATCHLINE SEE SHEET 3 OF 4

SEE SHEET 1 OF 4 NOTES & CERTIFICATIONS

- LEGEND**
- IP(S) IRON PIN TO BE SET
 - IP(F) IRON PIN FOUND
 - NAIL(S) NAIL TO SET SET
 - NAIL(F) NAIL FOUND
 - PIPE(F) IRON PIPE FOUND
 - INDICATES LOT & PARCEL LINES HEREBY VACATED
 - INDICATES R-O-W LINES HEREBY VACATED

SUBDIVISION OF PROPERTY OF
CITY OF WILLIAMSBURG, VA
 (D.B. 121 PG. 321, INSTR. No. 980769, INSTR. No. 031671 & INSTR. No. 040340)
 IRONBOUND ROAD & RICHMOND ROAD
 WILLIAMSBURG, VIRGINIA

VIRGINIA: IN THE CLERK'S OFFICE OF THE CIRCUIT COURT OF THE CITY OF WILLIAMSBURG, 4 Large/Small Plat(s) Recorded VIRGINIA ON THIS 25 DAY OF April, 2006, THIS PLAT WAS RECEIVED AND RECORDED WITH AS # 061743. ADMITTED TO RECORD IN MAP BOOK AT PAGE AT 3:37 p.m.

TESTE: *[Signature]* Dep. Inst. # 061743
 CLERK: BETSY B. WOOLPERS, CLERK OF CIRCUIT COURT

GRAPHIC SCALE IN FEET: 0 100 200 300

REVISIONS:

04-13-06	PER CLIENT COMMENTS.
04-07-06	PER CLIENT COMMENTS.
03-13-06	PER CITY COMMENTS.
03-08-06	PER CLIENT COMMENTS.
12-27-05	PER CITY COMMENTS.

WOOLPERT, INC.
 415 PORT CENTRE PARKWAY
 SUITE 101
 PORTSMOUTH, VA 23704-4924
 TEL: 757.399.6882 FAX: 757.399.6869

DES. N/A JOB NO. 62896.04
 DRN. RDA SCALE 1"=100'
 CKD. JGB DATE 12-17-05

SHEET NO. 2 OF 4
 FILE NO. Prelim_sub1_v2.dwg