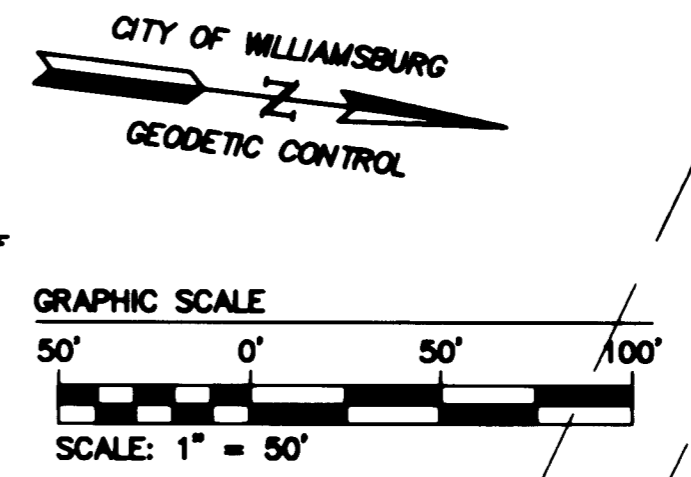
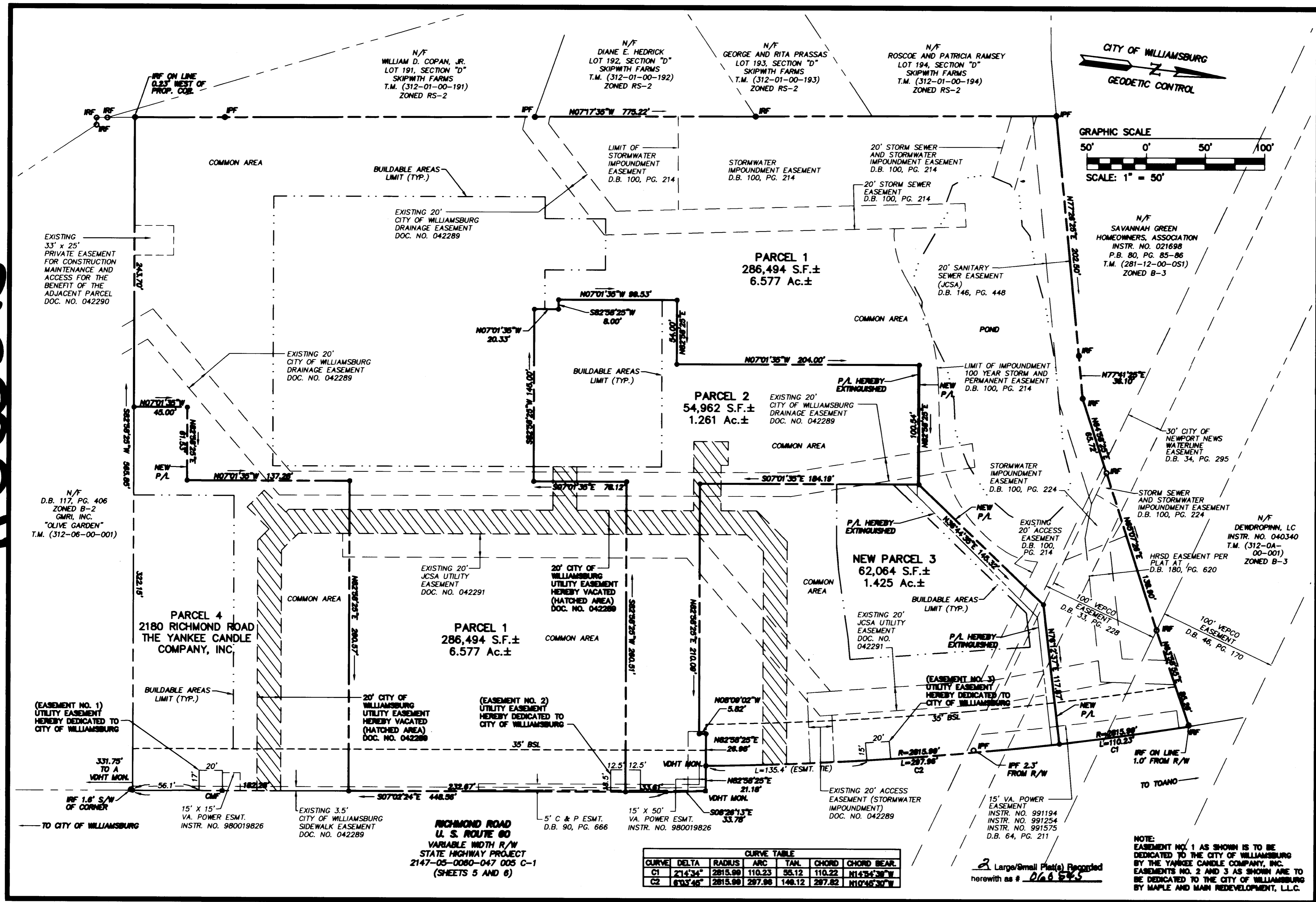


#060545

S:\joh\941\00-ALTA SURVEY\WBRO MOTOR CT\Map\Plat\1414840.Plot.dwg 5/4/2005 4:19:30 PM EST

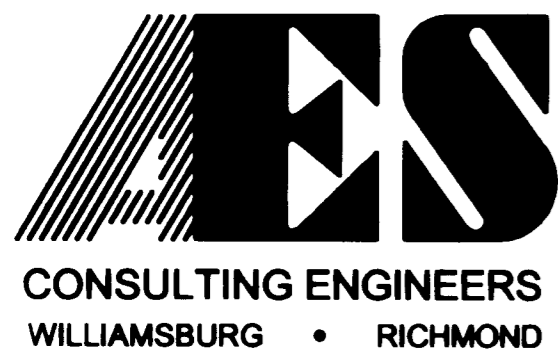


CURVE TABLE

CURVE	DELTA	RADIUS	ARC	TAN.	CHORD	CHORD BEAR.
C1	274°34'	2815.99	110.23	55.12	110.22	N14°34'30"W
C2	67°34'	2815.99	297.96	148.12	297.82	N10°46'30"W

2 Large/Small Plat(s) Recorded herewith as # 060545

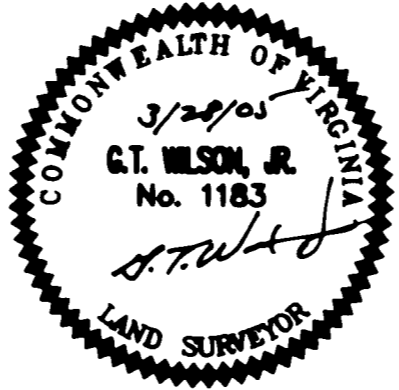
NOTE: EASEMENT NO. 1 AS SHOWN IS TO BE DEDICATED TO THE CITY OF WILLIAMSBURG BY THE YANKEE CANDLE COMPANY, INC. EASEMENTS NO. 2 AND 3 AS SHOWN ARE TO BE DEDICATED TO THE CITY OF WILLIAMSBURG BY MAPLE AND MAIN REDEVELOPMENT, L.L.C.



5248 Olde Towne Road, Suite 1  
Williamsburg, Virginia 23188  
(757) 253-0040  
Fax (757) 220-8994

PLAT SHOWING BOUNDARY LINE ADJUSTMENT  
BETWEEN PARCELS 1, 2 AND 3  
OWNED BY MAPLE & MAIN REDEVELOPMENT, LLC  
AND UTILITY EASEMENT ADJUSTMENTS  
BETWEEN PARCELS 1, 2, 3 AND 4

CITY OF WILLIAMSBURG VIRGINIA



No.	DATE	REVISION / COMMENT / NOTE	BY
		City of Williamsburg & County of James City Circuit Court. This PLAT was recorded on 28 February 06 at 2:55 AM/PM PG. DOCUMENT # 060545 BETSY B. WOOLRIDGE, CLERK	

Designed AES	Drawn JFS
Scale 1"=50'	Date 3/28/05
Project No. 9414-06	
Drawing No. 2 OF 2	

Maple & Main Redevelopment, LLC  
William & Main  
Lynchburg, VA