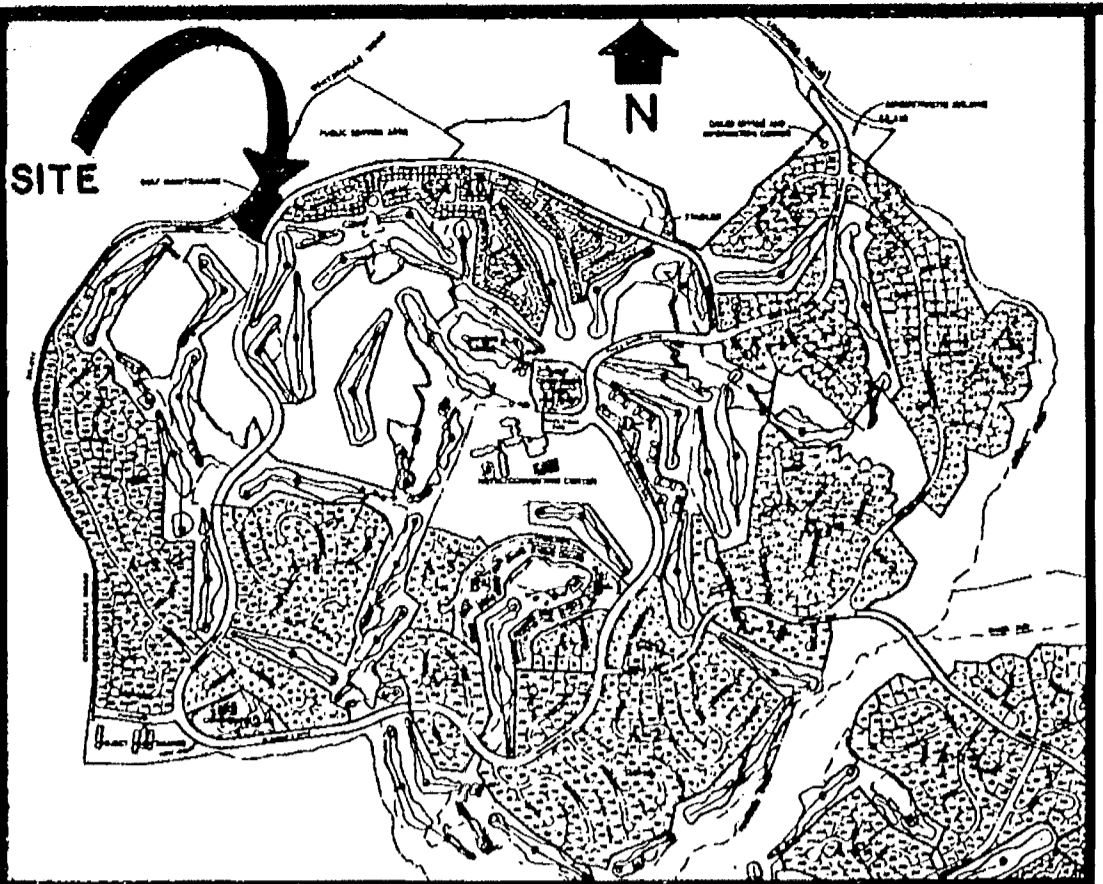


#060031477

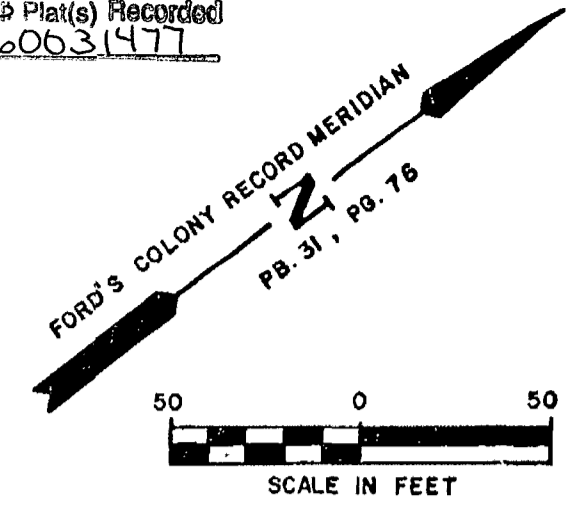


LOCATION MAP
SCALE 1" = 2000'

CURVE NO.	DELTA	RADIUS	CURVE DATA TABLE			CHORD BEARING
			LENGTH	TANGENT	CHORD	
1	14° 21' 41"	800.00'	200.52'	100.79'	200.00'	S 78° 51' 20" W
2	94° 40' 14"	75.00'	41.31'	27.13'	36.77'	S 69° 00' 41" W
3	15° 09' 19"	450.00'	119.03'	59.86'	118.68'	N 56° 04' 32" W
4	09° 37' 26"	450.00'	74.93'	37.55'	74.84'	N 43° 43' 40" W
5	14° 59' 00"	1452.39'	379.81'	191.00'	378.73'	N 43° 33' 04" E
6	14° 59' 00"	1477.39'	386.36'	194.29'	385.76'	S 43° 33' 04" W

City of Williamsburg & County of James City
Circuit Court: This PLAT was recorded on
12-22-2006
at 11:49 AM/PM PB PG
DOCUMENT # 060031477
BETSY B. WOOLRIDGE, CLERK
Betsy Woolridge Clerk

12 Large/Overhead Plat(s) Recorded
herewith as # 060031477

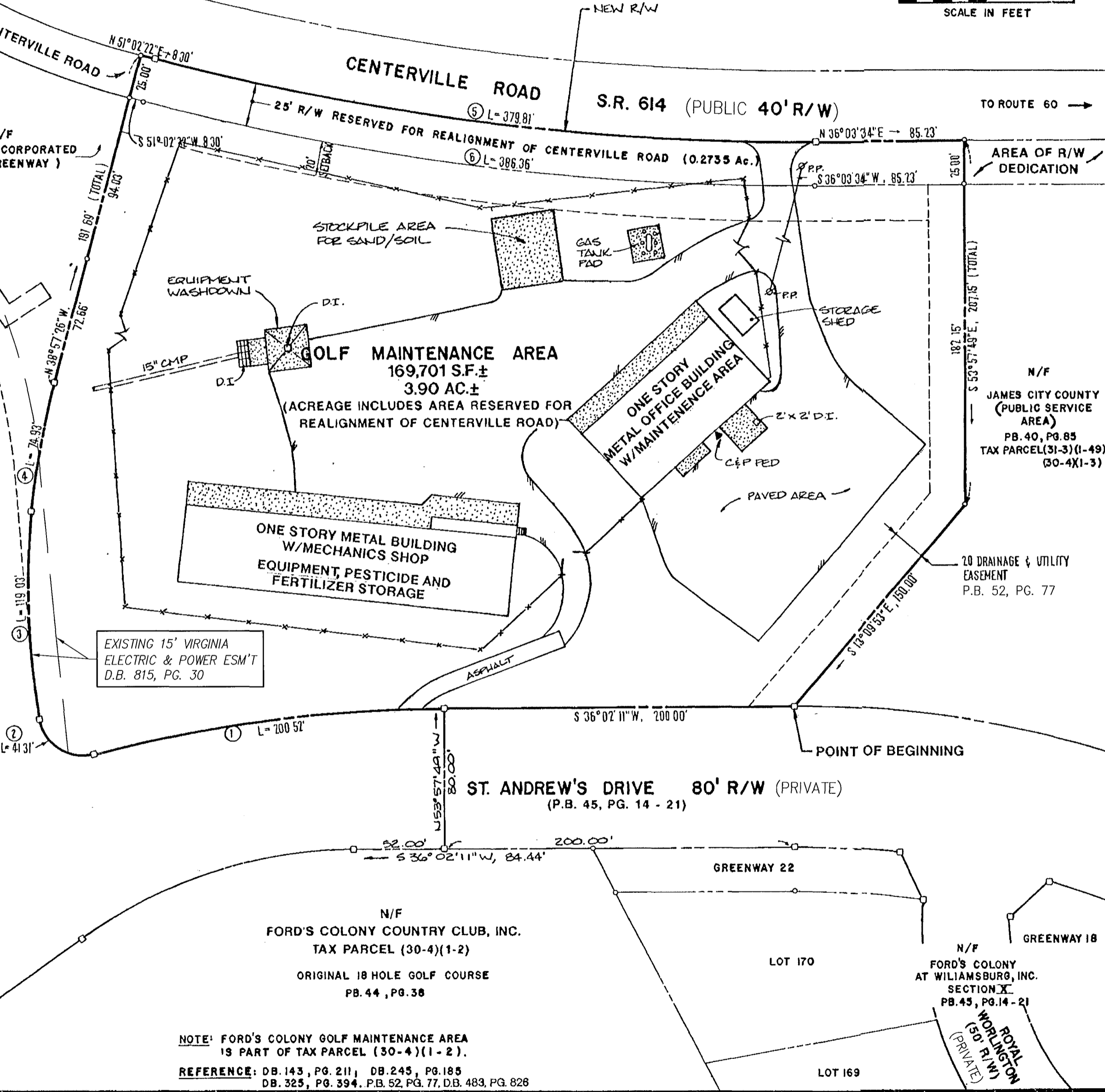


N/F
GRAY ASSOCIATES

- LEGEND**
- SANITARY MANHOLE
 - SEWER CLEANOUT
 - GRINDER PUMP
 - WATER METER
 - ⊗ WATER VALVE
 - ⊙ SPRINKLER BOX
 - ⊕ FIRE HYDRANT
 - DROP INLET
 - ⊙ STORM M.H.
 - ⊕ TRANSFORMER
 - ⊙ ELECTRIC VAULT
 - ⊕ LIGHT POLE
 - ⊙ CABLE PEDESTAL
 - ⊕ TELEPHONE PEDESTAL
 - GREEN
 - TEE BOX
 - SAND TRAP
 - ⊗ FENCE
 - CMF CONCRETE MONUMENT FOUND
 - IPF IRON PIPE FOUND
 - IRF IRON ROD FOUND
 - CONCRETE

EXISTING C&P EASEMENT (NOT WITHIN THE BOUNDARIES OF THIS SITE) D.B. 506, PG. 280

N/F REALTEC INCORPORATED (FUTURE DEVELOPMENT) TAX PARCEL (31-4)(2-2)



THIS REPRESENTS A REINSPECTION OF THESE PROPERTIES, ADDITIONS AND EXCEPTIONS AND ARE AS SHOWN. THIS PLAT AND REINSPECTION WAS COMPLETED ON 8/30/06. SEE SHEET 12 FOR ADDITIONAL DEED REFERENCES.

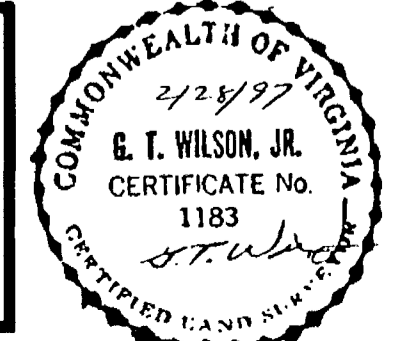
G. T. Wilson, Jr. 11/8/06
G. T. WILSON, JR., L.S. #1183 DATE

REVISED ON 12/14/06 PER COMMENTS.

NOTE: FORD'S COLONY GOLF MAINTENANCE AREA IS PART OF TAX PARCEL (30-4)(1-2).
REFERENCE: DB. 143, PG. 211; DB. 245, PG. 185; DB. 325, PG. 394; PB. 52, PG. 77; DB. 483, PG. 828

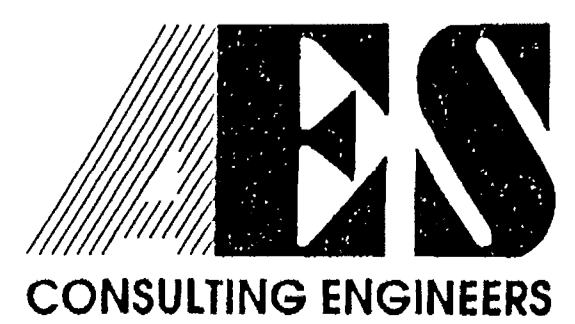
EXHIBIT 'A' - TRACT 6 (SEE SH. 12)

ALTA / ACSM LAND TITLE SURVEY
GOLF MAINTENANCE AREA
THE GOLF COURSE PROPERTIES
OWNED BY
FORD'S COLONY COUNTRY CLUB, INC.
POWHATAN DISTRICT JAMES CITY COUNTY VIRGINIA



No.	DATE	REVISION / COMMENT / NOTE	BY
3	12/21/06	REVISED PER COMMENTS	GTW
2	11/8/06	REINSPECTION	GTW
1	4/16/97	REVISED PER COMMENTS	GTW

Designed SOW	Drawn RMJ
Scale 1"=50'	Date 2/28/97
Project No. 5652	
Drawing No. 7 of 12	



5248 Olde Towne Road, Suite 1
Williamsburg, Virginia 23188
(804) 253-0040
Fax (804) 220-8994