

#060031477

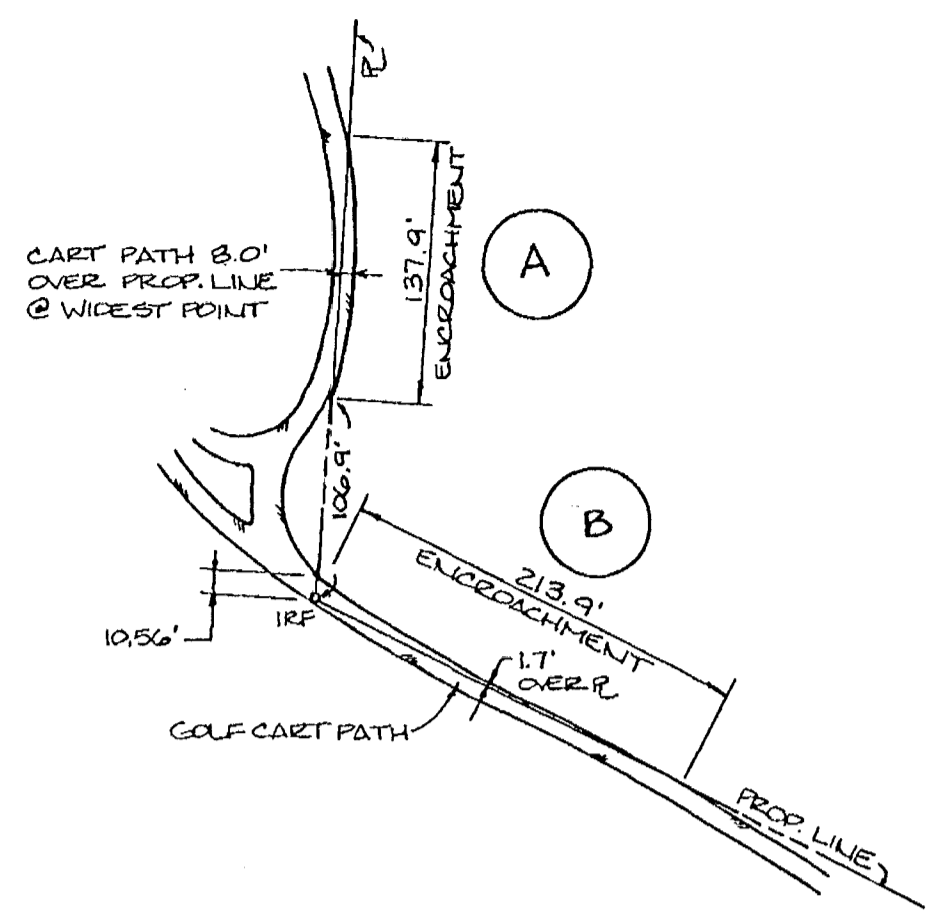
THIS REPRESENTS A REINSPECTION OF THESE PROPERTIES, ADDITIONS AND EXCEPTIONS AND ARE AS SHOWN. THIS PLAT AND REINSPECTION WAS COMPLETED ON 8/30/06. SEE SHEET 12 FOR ADDITIONAL DEED REFERENCES.

G. T. Wilson, Jr. 11/8/06
 G. T. WILSON, JR., L.S. #1183 DATE

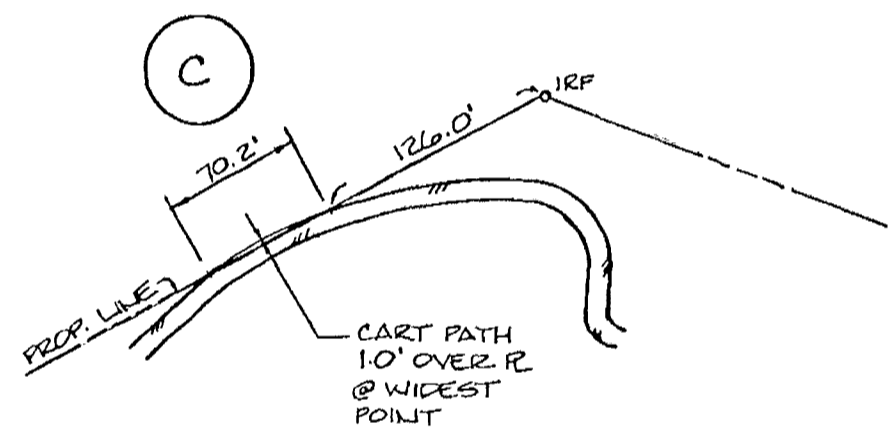
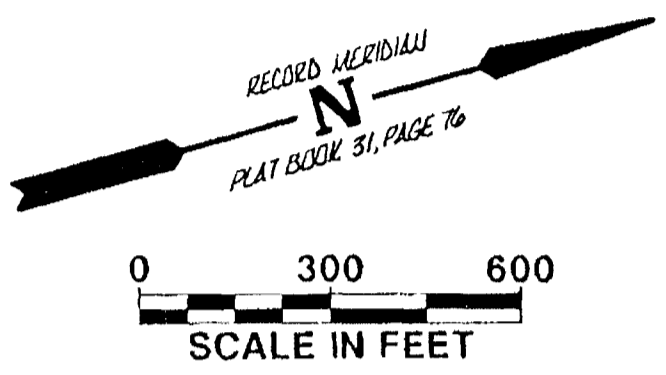
REVISED ON 12/14/06 PER COMMENTS.

LEGEND

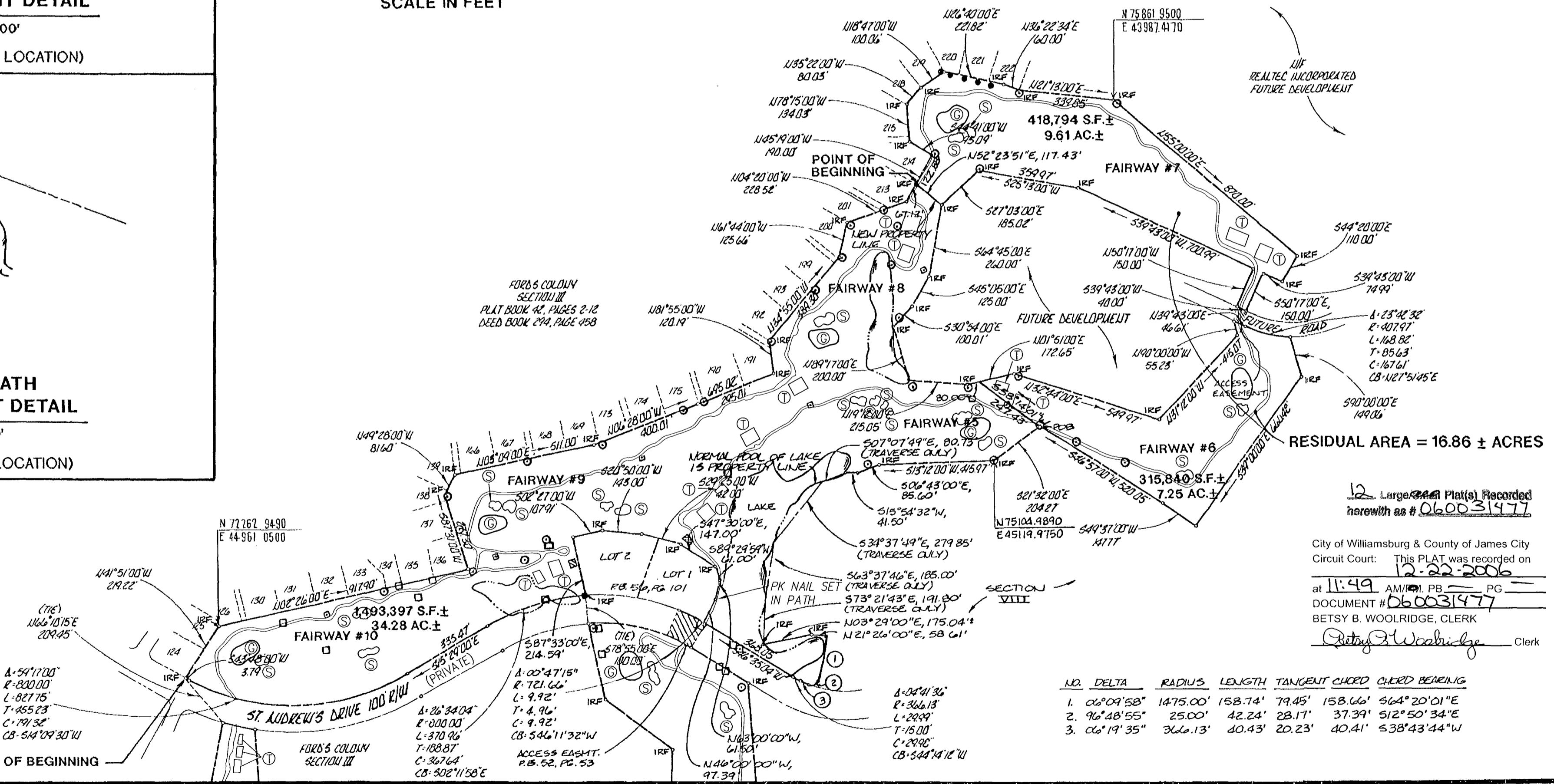
- SANITARY MANHOLE
- SEWER CLEANOUT
- GRINDER PUMP
- ⊠ WATER METER
- ⊠ WATER VALVE
- ⊠ SPRINKLER BOX
- ⊠ FIRE HYDRANT
- ⊠ DROP INLET
- ⊠ STORM M.H.
- ⊠ TRANSFORMER
- ⊠ ELECTRIC VAULT
- ⊠ LIGHT POLE
- ⊠ CABLE PEDESTAL
- ⊠ TELEPHONE PEDESTAL
- GREEN
- TEE BOX
- SAND TRAP
- FENCE
- CMF CONCRETE MONUMENT FOUND
- IPF IRON PIPE FOUND
- IRF IRON ROD FOUND
- CONCRETE



GOLF CART PATH ENCROACHMENT DETAIL
 SCALE: 1"=100'
 (SEE SHEET 4 FOR LOCATION)



GOLF CART PATH ENCROACHMENT DETAIL
 SCALE: 1"=100'
 (SEE SHEET 4 FOR LOCATION)



REFERENCE: P.B. 52, PG. 54

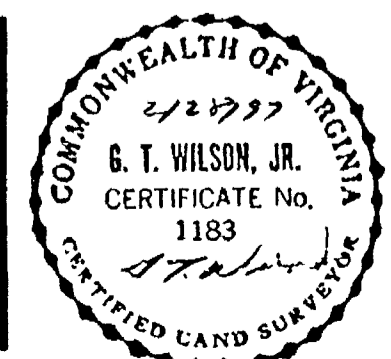
12 Large Plat(s) Recorded herewith as # 060031477

City of Williamsburg & County of James City Circuit Court: This PLAT was recorded on 12-22-2006 at 11:49 AM/PM. PB PG DOCUMENT # 060031477 BETSY B. WOOLRIDGE, CLERK *Betsy Woolridge* Clerk

NO.	DELTA	RADIUS	LENGTH	TANGENT	CHORD	CHORD BEARING
1.	06°09'58"	1475.00'	153.74'	79.45'	158.66'	S64°20'01"E
2.	96°48'55"	25.00'	42.24'	28.17'	37.39'	S12°50'34"E
3.	06°19'35"	366.13'	40.43'	20.23'	40.41'	S38°43'44"W

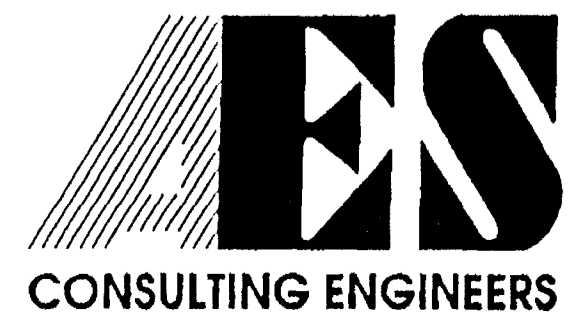
EXHIBIT 'A' & 'B' - TRACT 2 (SEE SH. 12)

ALTA / ACSM LAND TITLE SURVEY
 CHAMPIONSHIP 18 HOLE GOLF COURSE
 FAIRWAYS 5 - 10
 THE GOLF COURSE PROPERTIES
 OWNED BY
 FORD'S COLONY COUNTRY CLUB, INC.
 POWHATAN DISTRICT JAMES CITY COUNTY VIRGINIA



No.	DATE	REVISION / COMMENT / NOTE	BY
3	12/21/06	REVISED PER COMMENTS	GTW
2	11/8/06	REINSPECTION	GTW
1	4/18/97	REVISED PER COMMENTS	GTW

Designed SOW	Drawn RMJ
Scale 1"=300'	Date 2/28/97
Project No. 5652	
Drawing No. 3 of 12	



5248 Olde Towne Road, Suite 1
 Williamsburg, Virginia 23188
 (804) 253-0040
 Fax (804) 220-8994