

#060031477

LEGEND

- SANITARY MANHOLE
- SEWER CLEANOUT
- ⊙ GRINDER PUMP
- ⊙ WATER METER
- ⊙ WATER VALVE
- ⊙ SPRINKLER BOX
- ⊙ FIRE HYDRANT
- ⊙ DROP INLET
- ⊙ STORM M.H.
- ⊙ TRANSFORMER
- ⊙ ELECTRIC VAULT
- ⊙ LIGHT POLE
- ⊙ CABLE PEDESTAL
- ⊙ TELEPHONE PEDESTAL
- GREEN
- TEE BOX
- SAND TRAP
- ⊙ FENCE
- CMF CONCRETE MONUMENT FOUND
- IPF IRON PIPE FOUND
- IRF IRON ROD FOUND
- CONCRETE

THIS REPRESENTS A REINSPECTION OF THESE PROPERTIES, ADDITIONS AND EXCEPTIONS AND ARE AS SHOWN. THIS PLAT AND REINSPECTION WAS COMPLETED ON 8/30/06. SEE SHEET 12 FOR ADDITIONAL DEED REFERENCES.

G. T. WILSON, JR., L.S. #1183 DATE 11/8/06

REMSUED ON 12/14/06 PER COMMENTS.

Δ=10°55'45"
R=1157.33'
L=216.95'
T=108.80'
C=216.62'
CB=56.9°20'52"W

Δ=18°15'36"
R=1400.00'
L=445.36'
T=224.58'
C=443.49'
CB=372°54'48"W

Δ=105°45'00"E
R=120.00'
L=103°10'00"W
T=310.00'

Δ=15°44'45"
R=1300.00'
L=311.88'
T=156.68'
C=311.14'
CB=175°07'25"E

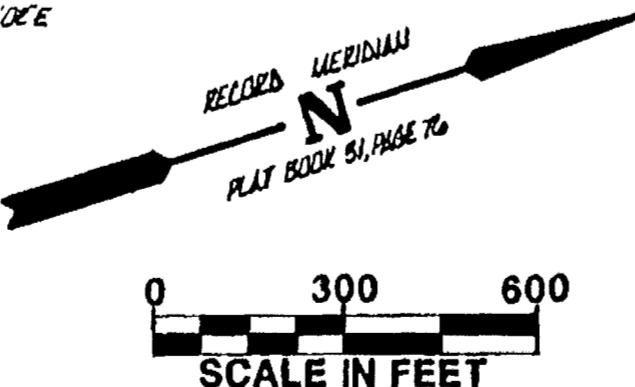
Δ=13°10'46"
R=475.00'
L=109.26'
T=54.87'
C=109.02'
CB=54.6°48'00"E

LINE	BEARING	DISTANCE
L1	N07°15'23"E	151.69'
L2	N08°04'21"E	127.19'
L3	N11°58'58"E	142.60'
L4	N11°58'58"E	62.48'
L5	N47°40'20"W	68.14'
L6	S80°45'00"E	35.58'
L7	N69°40'00"W	37.00'
L8	N23°45'00"W	34.64'
L9	N04°13'29"E	52.23'
L10	S82°41'30"W	25.55'
L11	S82°40'09"W	54.95'
L12	S16°48'19"E	126.40'
L13	S09°00'00"W	21.94'
L14	S80°14'55"W	40.61'
L15	S69°01'00"W	79.40'
L16	N76°10'00"W	133.28'
L17	N34°08'00"W	121.77'

R/W EXTENSION OF FORD'S COLONY DRIVE P.B. 44, PG. 37

CURVE DATA

MARK	DELTA	RADIUS	LENGTH	TANGENT	CHORD	CHORD BEARING
C1	26°10'19"	200.00'	91.36'	46.49'	90.56'	N 21°14'24"W
C2	75°11'44"	25.00'	32.81'	19.25'	30.51'	N 03°18'19"E
C3	22°21'28"	375.00'	148.33'	74.11'	145.40'	N 29°41'28"E
C4	40°01'58"	150.00'	104.80'	54.64'	102.69'	S16°23'20"E
C5	15°54'22"	150.00'	41.64'	20.98'	41.51'	S11°34'49"W
C6	18°02'17"	775.00'	243.99'	123.01'	242.98'	S10°30'52"W
C7	18°18'02"	775.00'	247.54'	124.83'	246.49'	S07°39'18"W



REFERENCE P.B. 52, PG. 53

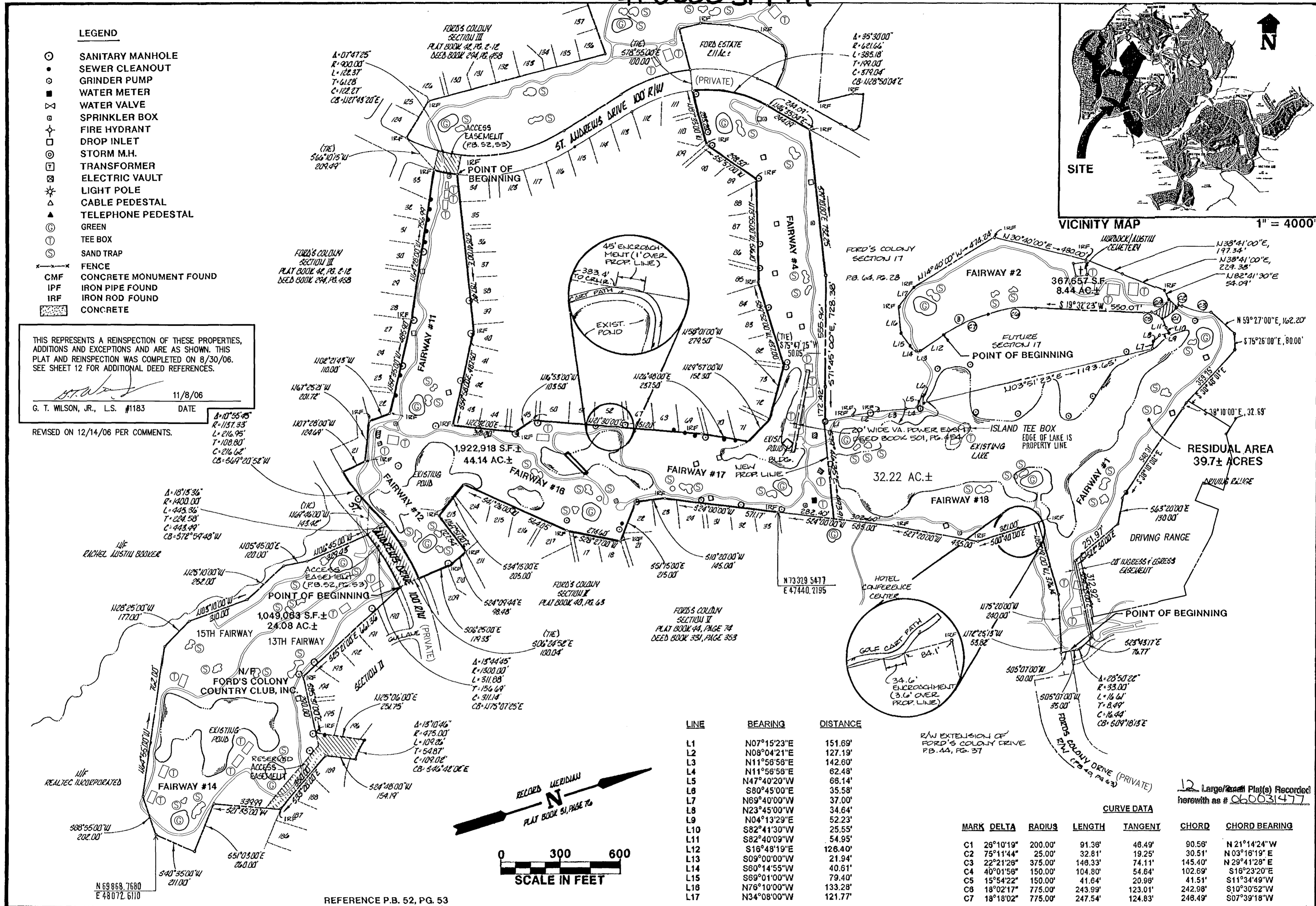
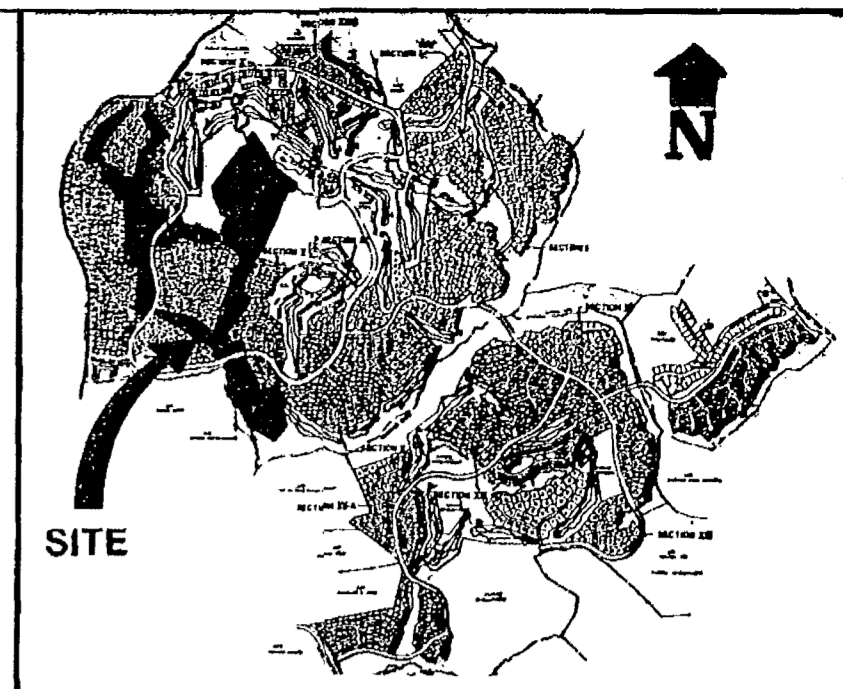
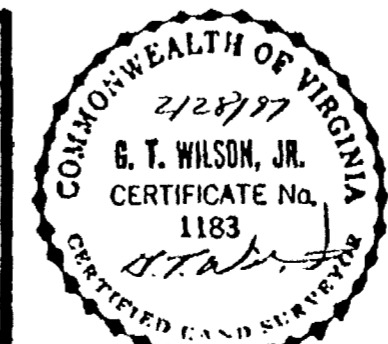


EXHIBIT 'A' & 'B' - TRACT ONE (SEE SH. 12)

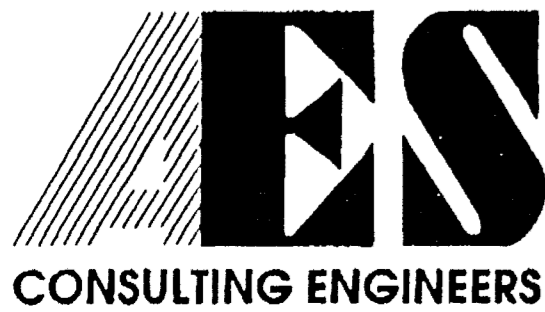
ALTA / ACSM LAND TITLE SURVEY
 CHAMPIONSHIP 18 HOLE GOLF COURSE
 FAIRWAYS 1 - 4 & 11 - 18
 THE GOLF COURSE PROPERTIES
 OWNED BY
 FORD'S COLONY COUNTRY CLUB, INC.
 POWHATAN DISTRICT JAMES CITY COUNTY VIRGINIA



No.	DATE	REVISION / COMMENT / NOTE	BY
3	12/21/06	REVISED PER COMMENTS	
2	11/8/06	REINSPECTION	
1	4/16/97	REVISED PER COMMENTS	

City of Williamsburg & County of James City
 Circuit Court: This PLAT was recorded on
 12-22-2006
 at 11:49 AM, P.B. PG. 11
 DOCUMENT # 060031477
 BETSY B. WOOLRIDGE, CLERK
 Betsy B. Woolridge Clerk

Designed SOW	Drawn RMJ
Scale 1"=300'	Date 2/28/97
Project No. 5652	Drawing No. 2 of 12



5248 Olde Towne Road, Suite 1
 Williamsburg, Virginia 23188
 (804) 253-0040
 Fax (804) 220-8994