

N/F  
GUS GIBSON JR.  
D.B. 662, PG 318  
P.B. 21, PG 58  
P.B. 55, PG.98

City of Williamsburg & County of James City  
Circuit Court: This PLAT was recorded on  
12-21-2006  
at 10:05 AM, PB PG  
DOCUMENT # 060031363  
BETSY B. WOOLRIDGE, CLERK  
*Betsy B. Woolridge* Clerk

RECORD NORTH  
Larger than Plats Recorded  
herewith as # 060031363  
P.B. 21, PG. 58

DEED REF.: D.B. 20, PG. 171  
D.B. 22, PG. 374  
D.B. 30, PG. 443 (VEPCO)  
D.B. 45, PG. 71  
PLAT REF.: P.B. 3, PG. 12  
P.B. 3, PG. 35  
P.B. 12, PG. 32  
S.H.P.B. 5, PG. 26

LINE	BEARING	DISTANCE
L1	S06°49'45"E	63.29'
L2	N81°23'15"E	44.35'
L3	S08°36'45"E	40.60'
L4	S81°23'15"W	45.20'
L5	S09°56'45"E	65.50'

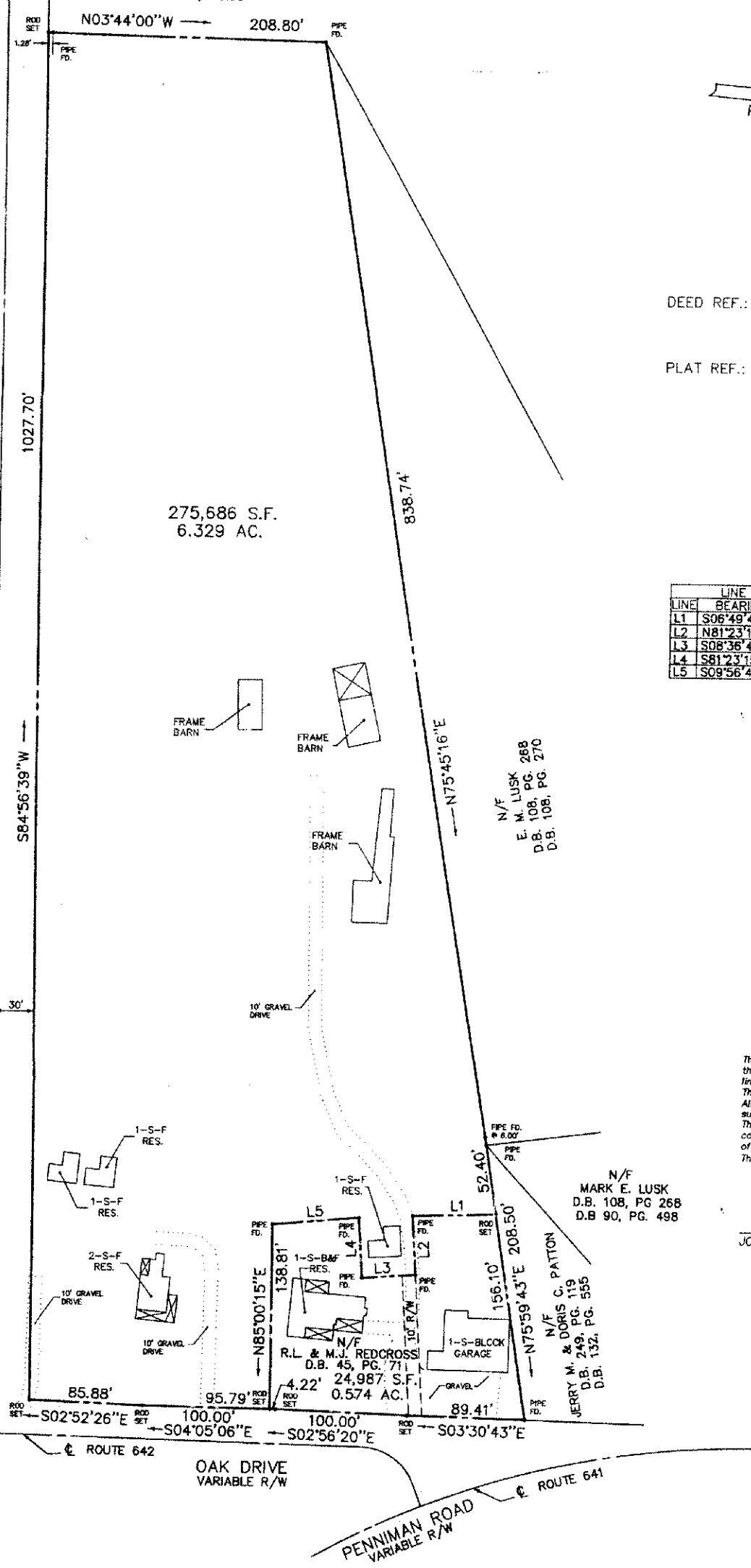


This is to certify that on OCT. 21, 1996 I surveyed the property shown on this plat and found the property lines to be correct as shown hereon. This survey represents a boundary survey only. All physical improvements were not located as part of this survey and encroachments may exist. This survey is subject to easements, servitudes and covenants of record and was prepared without benefit of a back title letter. This survey is not to be used for construction purposes.

*JOHNNY S. WALTERS, III*  
JOHNNY S. WALTERS, III C.L.S.

BOUNDARY SURVEY OF  
THE REDCROSS ESTATE  
PARCEL OF LAND CONTAINING  
275,686 SQ. FT.  
6.329 ACRES  
JAMES CITY COUNTY, VIRGINIA  
WALTERS LAND SURVEYING, LTD.  
4112 GEORGE WASHINGTON MEMORIAL HIGHWAY  
P.O. BOX 1594 YORKTOWN, VIRGINIA 23692  
PHONE: (804) 898-1057  
FAX: (804) 898-2862  
SCALE: 1" = 60' JOB NO. 961140 DRAWN BY:  
F.B. 131 Pg. 28-38 STONE & ASSOC DATE: OCT. 21, 1996

DUPONT BRANCH C&O RAILWAY COMPANY  
P.B. 2, PG. 37  
E MAIN TRACK



N/F  
E. M. LUSK 268  
D.B. 108, PG. 270  
D.B.

N/F  
MARK E. LUSK  
D.B. 108, PG. 268  
D.B. 90, PG. 498

N/F  
JERRY M. & DORIS C. PATTON  
D.B. 749, PG. 119  
D.B. 132, PG. 555

#060031363