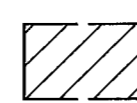
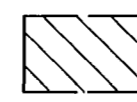


#060029377

VIRGINIA STATE PLANE COORDINATE SYSTEM, SOUTH ZONE, NAD 83/86

 DENOTES JCSA UTILITY & STORMWATER EASEMENT AREA=5,589 S.F. OR 0.128 AC.
 DENOTES JCSA UTILITY EASEMENT AREA=77,119 S.F. OR 1.770 AC., SEE NOTE 13.

N/F HERITAGE MOBILE HOME (DB 102, PG 343-347) PAR. ID 5920100003

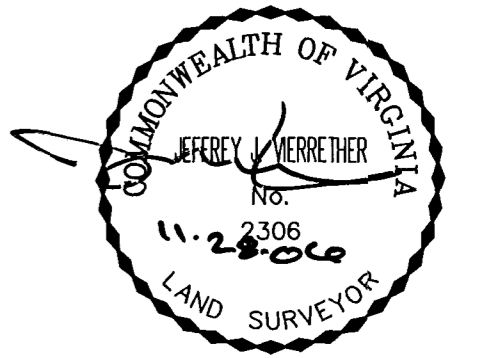
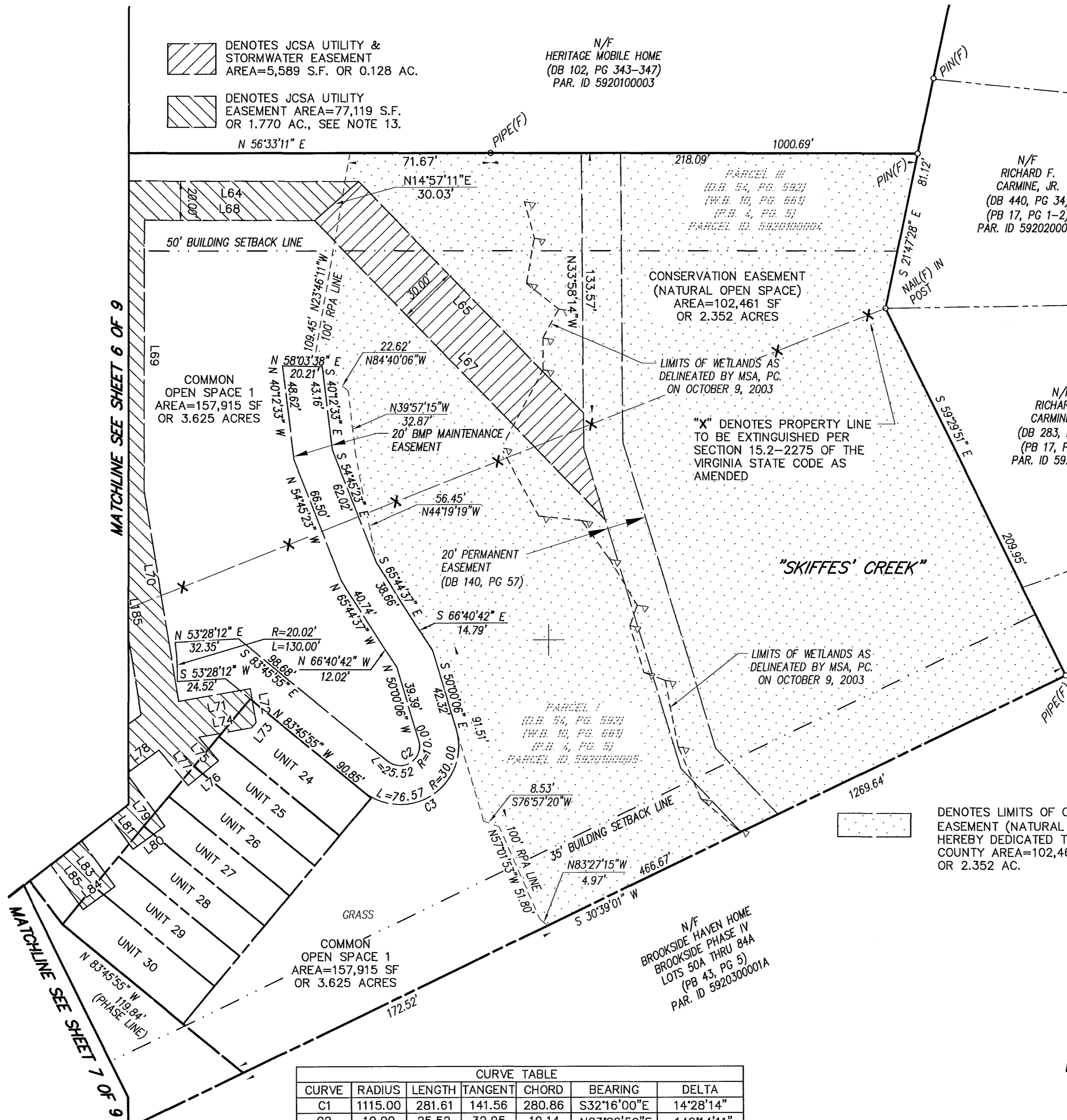
N/F RICHARD F. CARMINE, JR. (DB 440, PG 34) (PB 17, PG 1-2) PAR. ID 5920200019

N/F RICHARD F. CARMINE, JR. (DB 283, PG 332) (PB 17, PG 1-2) PAR. ID 5920200018

POPLAR HALL PLANTATION SECTION NO. 1 (PB 17, PG 1-2)

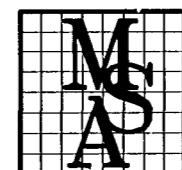
N/F JOHN N EDWARDS (DB 471, PG 102) (PB 17, PG 1-2) PAR. ID 5920200017

N/F BROOKSIDE HAVEN HOME BROOKSIDE PHASE IV LOTS 50A THRU 84A (PB 43, PG 5) PAR. ID 5920300001A

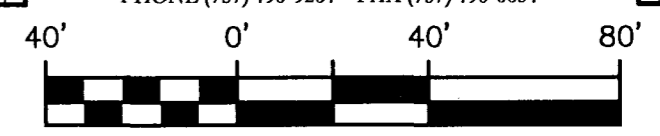
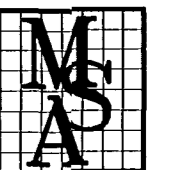


CURVE TABLE						
CURVE	RADIUS	LENGTH	TANGENT	CHORD	BEARING	DELTA
C1	1115.00	281.61	141.56	280.86	S32°16'00"E	14°28'14"
C2	10.00	25.52	32.95	19.14	N23°06'59"E	146°14'11"
C3	30.00	76.57	98.85	57.41	N23°06'59"E	146°14'11"

SUBDIVISION PLAT OF
POCAHONTAS SQUARE, PHASE 1
 SHOWING JCSA EASEMENTS
 JAMES CITY COUNTY, VIRGINIA
 SEPTEMBER 14, 2006



MSA, P.C.
 Landscape Architecture · Planning · Surveying
 Engineering · Environmental Sciences
 5033 ROUSE DRIVE, VIRGINIA BEACH, VA 23462-3708
 PHONE (757) 490-9264 · FAX (757) 490-0634



GRAPHIC SCALE
1" = 40'

City of Williamsburg & County of James City
 Circuit Court: This PLAT was recorded on
 7 December 2006
 at 10:50 AM/PM, PB - PG -
 DOCUMENT # 060029377
 BETSY B. WOOLRIDGE, CLERK
 Betsy B. Woolridge Clerk

9 Large/Small Plates Recorded
 herewith as # 060029377

SEE SHEET 1 OF 9 FOR NOTES AND CERTIFICATES
 SEE SHEET 9 FOR LINE TABLES