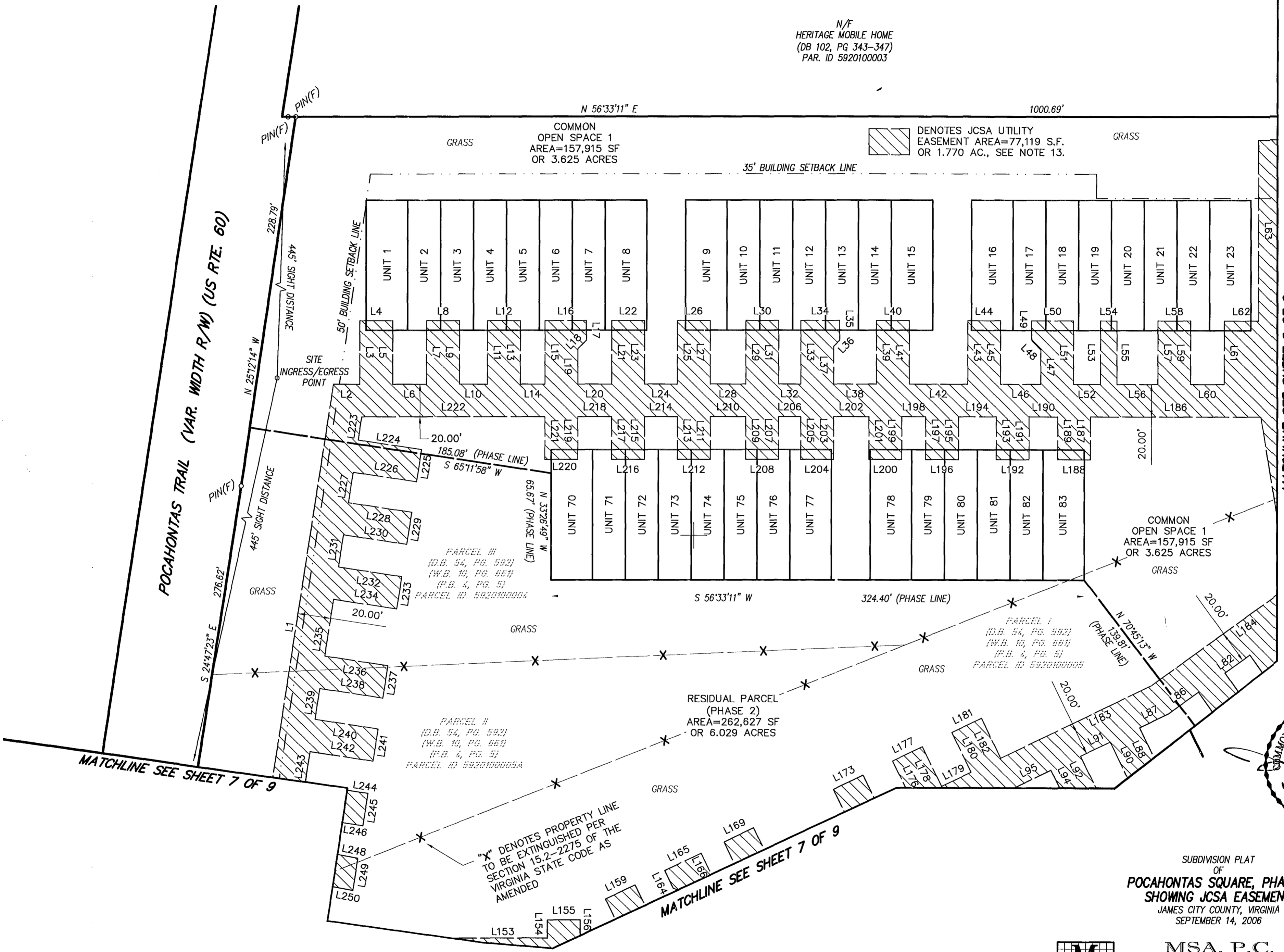


#060029377

N/F
HERITAGE MOBILE HOME
(DB 102, PG 343-347)
PAR. ID 5920100003

VIRGINIA STATE PLANE COORDINATE
SYSTEM, SOUTH ZONE, NAD 83/86

POCAHONTAS TRAIL (VAR. WIDTH R/W) (US RTE. 60)



MATCHLINE SEE SHEET 8 OF 9

MATCHLINE SEE SHEET 7 OF 9

MATCHLINE SEE SHEET 7 OF 9

PARCEL #
(D.B. 54, PG. 592)
(W.B. 10, PG. 664)
(P.B. 4, PG. 5)
PARCEL ID 5920000004

PARCEL 1
(D.B. 54, PG. 592)
(W.B. 10, PG. 664)
(P.B. 4, PG. 5)
PARCEL ID 5920000005

RESIDUAL PARCEL
(PHASE 2)
AREA=262,627 SF
OR 6.029 ACRES

"X" DENOTES PROPERTY LINE
TO BE EXTINGUISHED PER
SECTION 15.2-2275 OF THE
VIRGINIA STATE CODE AS
AMENDED

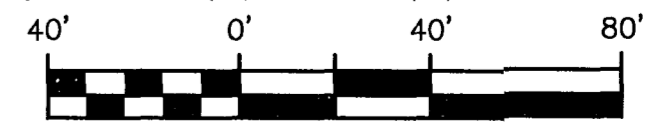
DENOTES JCSA UTILITY
EASEMENT AREA=77,119 S.F.
OR 1.770 AC., SEE NOTE 13.

COMMON
OPEN SPACE 1
AREA=157,915 SF
OR 3.625 ACRES



SUBDIVISION PLAT
OF
POCAHONTAS SQUARE, PHASE 1
SHOWING JCSA EASEMENT
JAMES CITY COUNTY, VIRGINIA
SEPTEMBER 14, 2006

MSA, P.C.
Landscape Architecture • Planning • Surveying
Engineering • Environmental Sciences
5033 ROUSE DRIVE, VIRGINIA BEACH, VA 23462-3708
PHONE (757) 490-9264 • FAX (757) 490-0634



GRAPHIC SCALE
1" = 40'

9 Large/Small Plat(s) Recorded
herewith as # 060029377

City of Williamsburg & County of James City
Circuit Court - This PLAT was recorded on
7 December 2006
at 10:50 AM/PM, PG. 7
DOCUMENT # 060029377
BETSY B. WOOLRIDGE, CLERK
Betsy B. Woolridge Clerk

SEE SHEET 1 OF 9 FOR NOTES AND CERTIFICATES
SEE SHEET 9 OF 9 FOR LINE TABLES

FB CS 323, PG 25 & 32
DRWN. BY CJS
CHK'D. BY JJV DATE 09/14/06

JOB# 03066
SHEET 6 OF 9