

#060026719

JAMES CITY CO. GIS AIDS VIA SOUTH ZONE
 NOTE: COORDINATES SHOWN HEREON
 ARE FOR JAMES CITY COUNTY GIS
 PURPOSES ONLY AND DO NOT AGREE
 WITH PROJECT COORDINATE BASE OR
 BEARING STRUCTURE

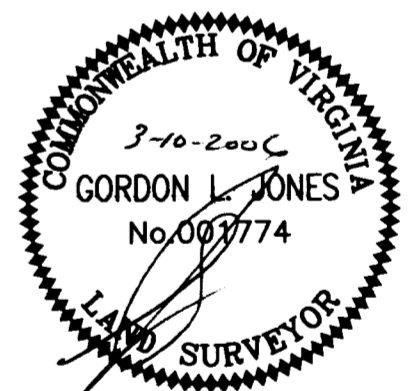
FENWICK HILLS
 SECTION TWO
 SEE INST. 05000 1407

FENWICK HILLS
 SECTION ONE
 SEE P.B. 85 & PGS. 92-96

FENWICK HILLS
 SECTION ONE
 SEE P.B. 85 & PGS. 92-96

CURVE TABLE

NUMBER	DELTA	RADIUS	LENGTH	TANGENT	CHORD	CHORD BEARING
C1	27°02'00"	55.00	25.95	13.22	25.71	S 58°03'19" E
C2	13°30'00"	423.22	99.72	50.09	99.49	S 51°49'23" E
C5	04°30'00"	296.33	23.27	11.64	23.27	S 62°28'37" W
C6	27°30'00"	401.15	192.54	98.16	190.69	S 81°40'37" W
C17	05°42'00"	489.01	48.65	24.34	48.63	S 73°37'23" E
C34	77°00'00"	55.00	73.91	43.75	68.48	N 27°04'23" W
C35	21°19'25"	55.00	20.47	10.35	20.35	N 55°45'54" E

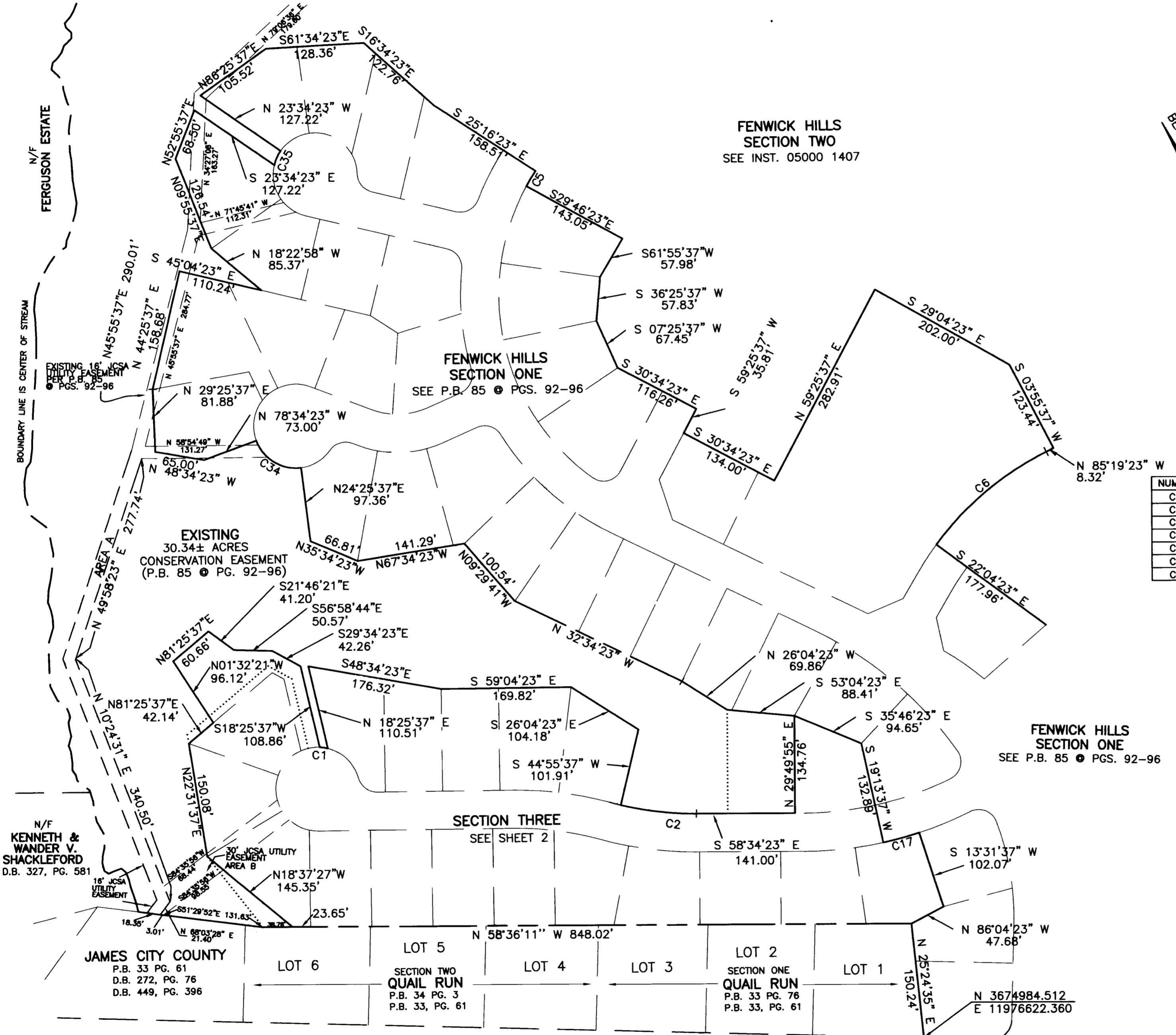


SECTION THREE
 "FENWICK HILLS"
 STONEHOUSE DISTRICT
 JAMES CITY COUNTY, VIRGINIA
 MARCH 10, 2006

Scale: 1" = 100'
 SHEET 4 OF 4



COMPS: CB
 CAD: ACV
 CHECK: GLJ
 DWG. NO.: 096091SUBSEC3 JOB NO.: 96991



N/F
 KENNETH &
 WANDER V.
 SHACKLEFORD
 D.B. 327, PG. 581

JAMES CITY COUNTY
 P.B. 33 PG. 61
 D.B. 272, PG. 76
 D.B. 449, PG. 396

SECTION TWO
 QUAIL RUN
 P.B. 34 PG. 3
 P.B. 33, PG. 61

SECTION ONE
 QUAIL RUN
 P.B. 33 PG. 76
 P.B. 33, PG. 61

OLD STAGE ROAD
 (STATE ROUTE #746)

0.43 MI. TO
 STATE ROUTE #600

City of Williamsburg & County of James City
 Circuit Court: This PLAT was recorded on
 21 October 2006
 at 9:26 AM/P.M. PG. - PG. -
 DOCUMENT # 060026719
 BETSY B. WOOLRIDGE, CLERK
 Betsy B. Woolridge Clerk

4 Large/Small Plat(s) Recorded
 herewith as # 060026719