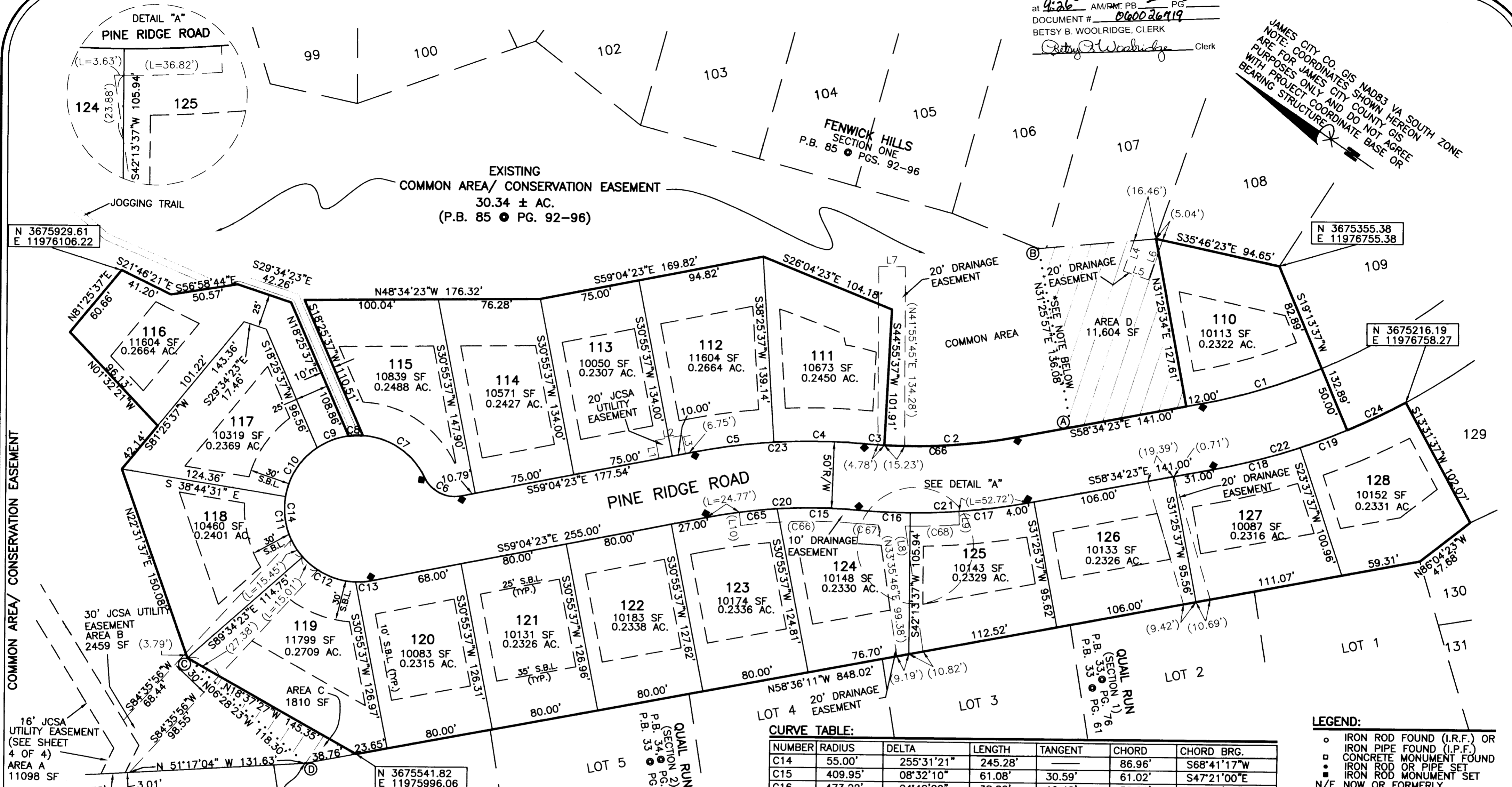


#060026719

City of Williamsburg & County of James City  
 Circuit Court: This PLAT was recorded on  
 31 October 2006  
 at 9:26 AM/P.M. PG. 14 PG.  
 DOCUMENT # 060026719  
 BETSY B. WOOLRIDGE, CLERK  
 Betsy B. Woolridge Clerk

JAMES CITY CO. GIS NAD83 VA SOUTH ZONE  
 NOTE: COORDINATES SHOWN HEREON  
 ARE FOR JAMES CITY COUNTY GIS  
 PURPOSES ONLY AND DO NOT AGREE  
 WITH PROJECT COORDINATE BASE OR  
 BEARING STRUCTURE



COMPS: CB  
 CAD: RC/ACV  
 CHECK: RC/GJL  
 DWG. NO.: 0906091SUB1SECS3 JOB NO.: 98091-07

COMMON AREA/ CONSERVATION EASEMENT

JAMES CITY COUNTY  
 P.B. 33, PG. 61  
 D.B. 272, PG. 76  
 D.B. 449, PG. 396

**LINE TABLE:**

NUMBER	DIRECTION	DISTANCE
L1	S30°55'37"W	13.90'
L2	S59°04'23"E	20.00'
L3	S30°55'37"W	13.90'
L4	N61°13'17"E	24.00'
L5	S28°46'43"E	20.00'
L6	N61°13'17"E	31.38'
L7	N48°04'15"W	20.00'
L8	N33°35'46"E	24.17'
L9	N40°15'10"E	10.01'
L10	N36°33'01"E	10.01'
L11	N34°55'38"E	50.21'
L12	S55°04'22"E	10.00'
L13	S23°40'04"E	10.00'

**CURVE TABLE:**

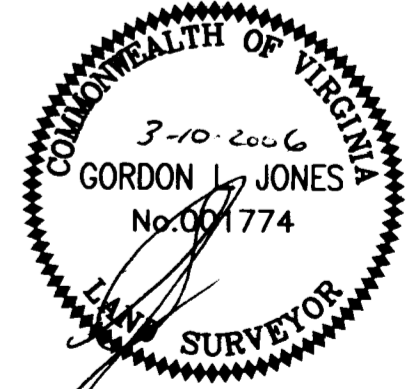
NUMBER	RADIUS	DELTA	LENGTH	TANGENT	CHORD	CHORD BRG.
C1	439.01'	12°12'00"	93.48'	46.92'	93.30'	N64°40'23"W
C2	423.22'	13°30'00"	99.72'	50.09'	99.49'	S51°49'23"E
C3	423.22'	02°00'00"	14.77'	7.39'	14.77'	N44°04'23"W
C4	459.95'	08°28'59"	68.10'	34.11'	68.04'	S47°19'23"E
C5	459.95'	07°29'07"	60.09'	30.09'	60.05'	S55°18'22"E
C6	25.00'	75°31'21"	32.95'	19.36'	30.62'	S21°18'43"E
C7	55.00'	60°59'12"	58.54'	32.39'	55.82'	S14°02'38"E
C8	55.00'	11°12'32"	10.76'	5.40'	10.74'	S50°38'31"E
C9	55.00'	26°18'09"	25.25'	12.85'	25.03'	S68°53'51"E
C10	55.00'	46°41'35"	44.82'	23.74'	43.59'	S74°36'17"W
C11	55.00'	50°49'52"	48.79'	26.13'	47.21'	S25°50'33"W
C12	55.00'	46°53'52"	45.02'	23.86'	43.77'	N23°01'19"W
C13	55.00'	12°36'08"	12.10'	6.07'	12.07'	N52°46'19"W

**CURVE TABLE:**

NUMBER	RADIUS	DELTA	LENGTH	TANGENT	CHORD	CHORD BRG.
C14	55.00'	25°31'21"	245.28'	—	86.96'	S68°41'17"W
C15	409.95'	08°32'10"	61.08'	30.59'	61.02'	S47°21'00"E
C16	473.22'	04°42'00"	38.82'	19.42'	38.81'	N45°25'23"W
C17	473.22'	10°48'00"	89.20'	44.73'	89.07'	N53°10'23"W
C18	489.01'	07°48'00"	66.57'	33.34'	66.52'	N62°28'23"W
C19	489.01'	04°24'00"	37.55'	18.79'	37.54'	S68°34'23"E
C20	409.95'	15°57'52"	114.23'	57.49'	113.86'	N51°03'51"W
C21	473.22'	15°30'00"	128.02'	64.40'	127.63'	S50°49'23"E
C22	489.01'	12°12'00"	104.12'	52.26'	103.93'	N64°40'23"W
C23	459.95'	15°58'06"	128.19'	64.51'	127.77'	N51°03'55"W
C24	489.01'	05°42'00"	48.65'	24.34'	48.63'	S73°37'23"E
C25	402.05'	08°20'21"	58.52'	29.31'	58.47'	S26°54'11"E
C26	275.27'	03°30'00"	16.82'	8.41'	16.81'	N29°19'22"W
C27	275.27'	05°12'39"	25.03'	12.53'	25.03'	S24°58'03"E
C28	275.27'	05°50'03"	28.03'	14.03'	28.02'	S19°26'42"E
C65	409.95'	07°25'42"	53.15'	26.61'	53.15'	N55°19'56"W
C66	399.95'	12°33'19"	87.64'	44.00'	87.47'	N49°21'35"W
C67	483.23'	01°51'35"	15.59'	7.84'	15.68'	N44°00'11"W
C68	483.23'	04°47'47"	40.45'	20.24'	40.44'	N49°44'28"W
C69	423.22'	15°30'00"	114.49'	57.60'	114.14'	S50°49'23"E

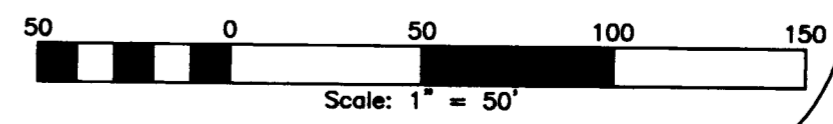
**LEGEND:**

- IRON ROD FOUND (I.R.F.) OR IRON PIPE FOUND (I.P.F.)
- CONCRETE MONUMENT FOUND
- IRON ROD OR PIPE SET
- IRON ROD MONUMENT SET
- N/F NOW OR FORMERLY
- R/W RIGHT-OF-WAY
- (0.00) EASEMENT TIES
- S.B.L. SET BACK LINE
- ▨ CONSERVATION EASEMENT DEDICATED TO JAMES CITY CO.



\*NOTE: BOUNDARY LINE PER  
 PB 85, PG. 92-96  
 SHOWN HEREON AS A TO B,  
 C TO D, AND E TO F  
 IS HEREBY VACATED

PLAT  
 SHOWING LOTS 16-30, 110-128, & 132-146  
 SECTION THREE  
 "FENWICK HILLS"  
 LOCATED IN THE STONEHOUSE DISTRICT OF  
 JAMES CITY COUNTY,  
 VIRGINIA  
 MARCH 10, 2006



4 Large/Small Plat(s) Recorded  
 herewith as # 060026719