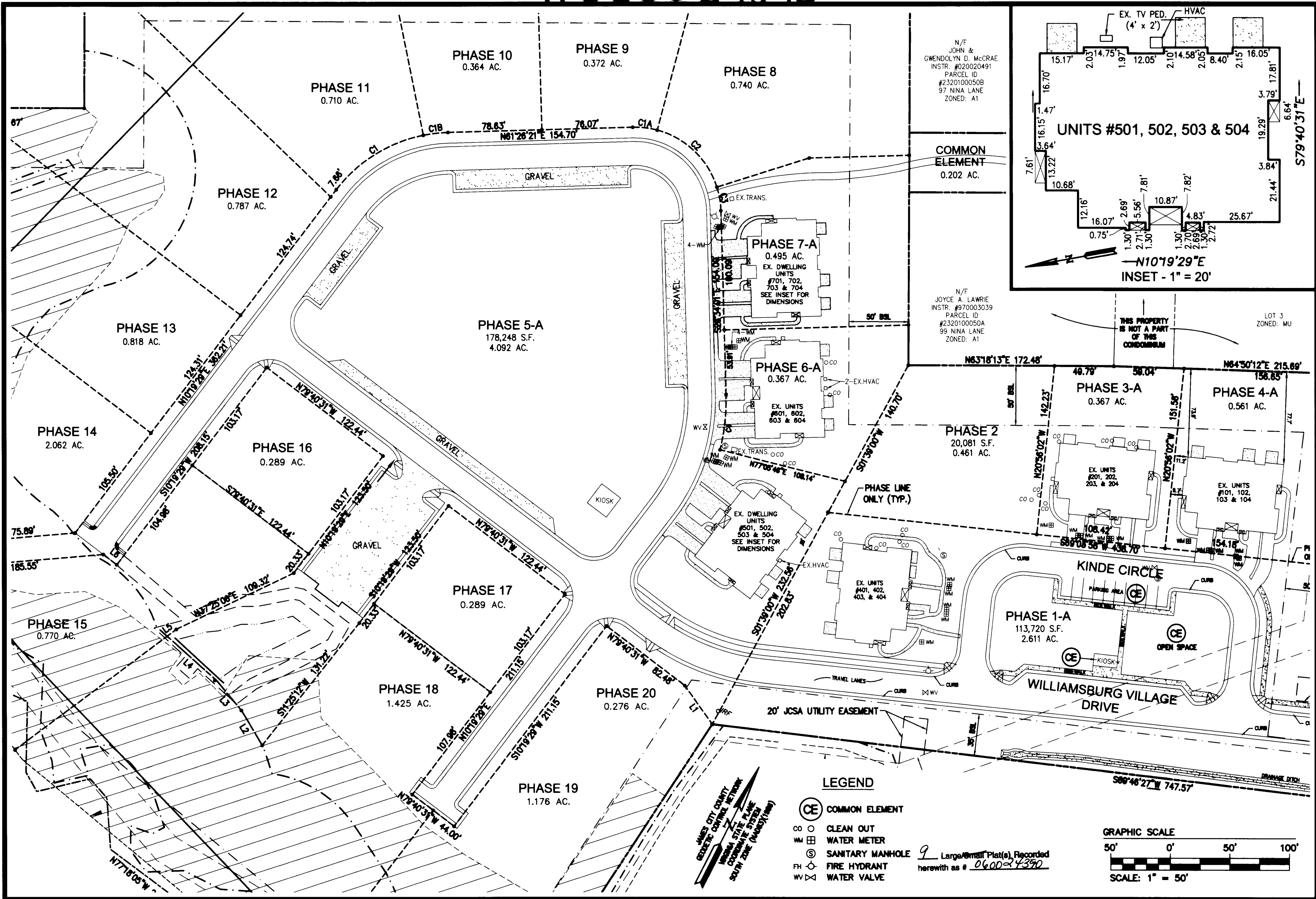
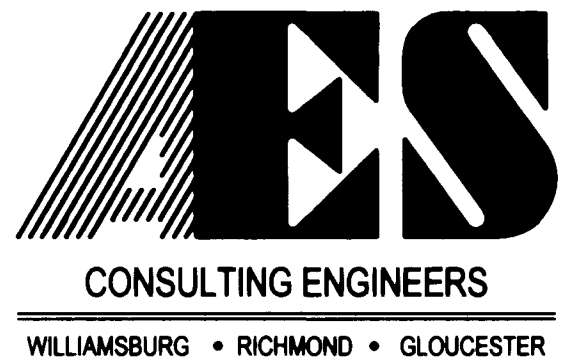


#060024390



C:\sets\9786\02 Norge Condo Plats\dwg\Plats\Record\Phase 5\Incl Condo Plat PH 5 A\978602Condo Phase 5-A Sh 02.dwg, 9/27/2006 12:51:45 PM

"EXHIBIT 1"



5248 Olde Towne Road, Suite 1
Williamsburg, Virginia 23188
(757) 253-0040
Fax (757) 220-8994

PLAT OF CONDOMINIUM
WILLIAMSBURG VILLAGE AT NORGE CONDOMINIUM
PHASE 5-A
UNITS #501, 502, 503, AND 504
STONEHOUSE DISTRICT COUNTY OF JAMES CITY VIRGINIA



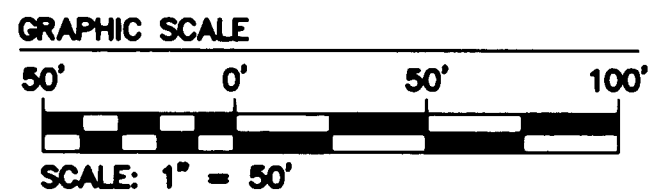
No.	DATE	REVISION / COMMENT / NOTE	BY

City of Williamsburg & County of James City
Circuit Court: This PLAT was recorded on
September 28, 2006
at *12:20* AM/PM, PG
DOCUMENT # *060024390*
BETSY B. WOOLRIDGE, CLERK
Betsy B. Woolridge Clerk

Designed VMB/JAG	Drawn AWT
Scale 1"=50'	Date 9/28/06
Project No. 9286-2	
Drawing No. 2 of 9	

LEGEND

- CE COMMON ELEMENT
- CO CLEAN OUT
- WM WATER METER
- SM SANITARY MANHOLE
- FH FIRE HYDRANT
- WV WATER VALVE



9 Large/Small Plat(s) Recorded
herewith as # *060024390*