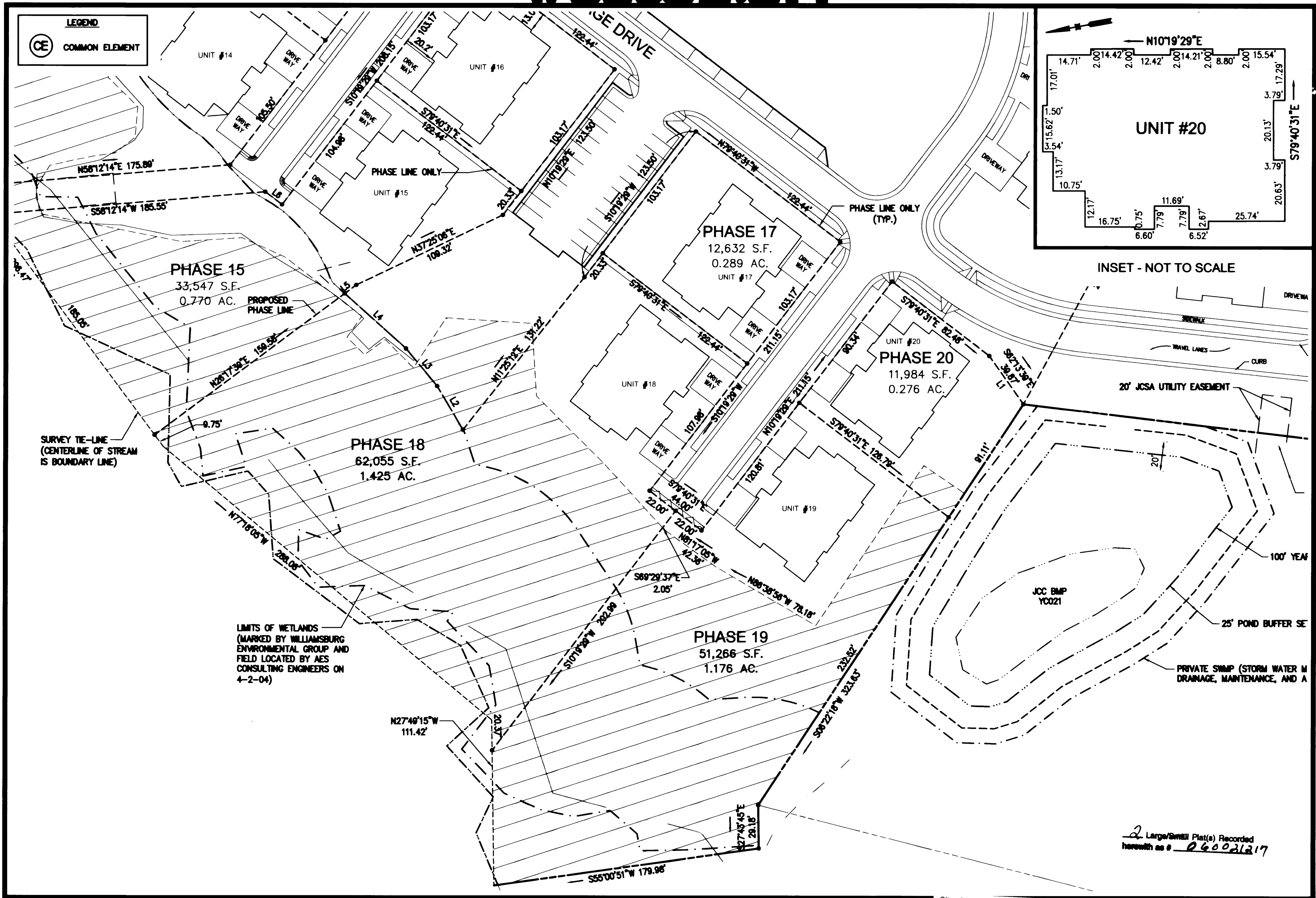
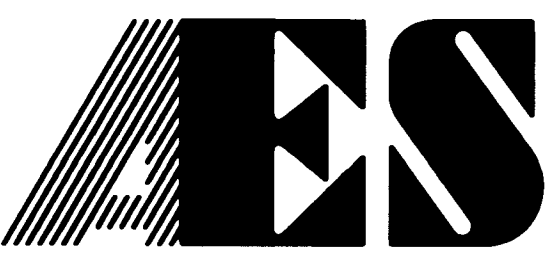


#060021217



2 Large/Small Plat(s) Recorded
herein as # 060021217



5248 Olde Towne Road, Suite 1
Williamsburg, Virginia 23188
(757) 253-0040
Fax (757) 220-8994

CONSULTING ENGINEERS
WILLIAMSBURG • RICHMOND • GLOUCESTER •

"EXHIBIT 1"
PLAT OF CONDOMINIUM
WILLIAMSBURG VILLAGE AT NORGE CONDOMINIUM
PHASE 20, UNIT #20
STONEHOUSE DISTRICT COUNTY OF JAMES CITY VIRGINIA



City of Williamsburg & County of James City
Circuit Court: This PLAT was recorded on 22 August 2006
at 11:34 AM/PM PB PG
DOCUMENT # 060021217
BETSY B. WOOLRIDGE, CLERK
Betsy B. Woolridge Clerk

No.	DATE	REVISION / COMMENT / NOTE	REVIEWED BY	REVIEWED BY
1	8/8/06	ADDED R/W PARCEL AS ADDITIONAL AREA	MM	MM

Designed VMB/JAG	Drawn AWT/eaw
Scale 1"=40'	Date 8/7/06
Project No. 9286-2	
Drawing No. 2 of 2	

S:\Jobs\9256\02 - Norge Condo - Plats\dwg\Plats\Records\Phase 20\928602\Condo Sn 002 - PHASE 20.dwg, 8/8/2006 5:41:25 PM