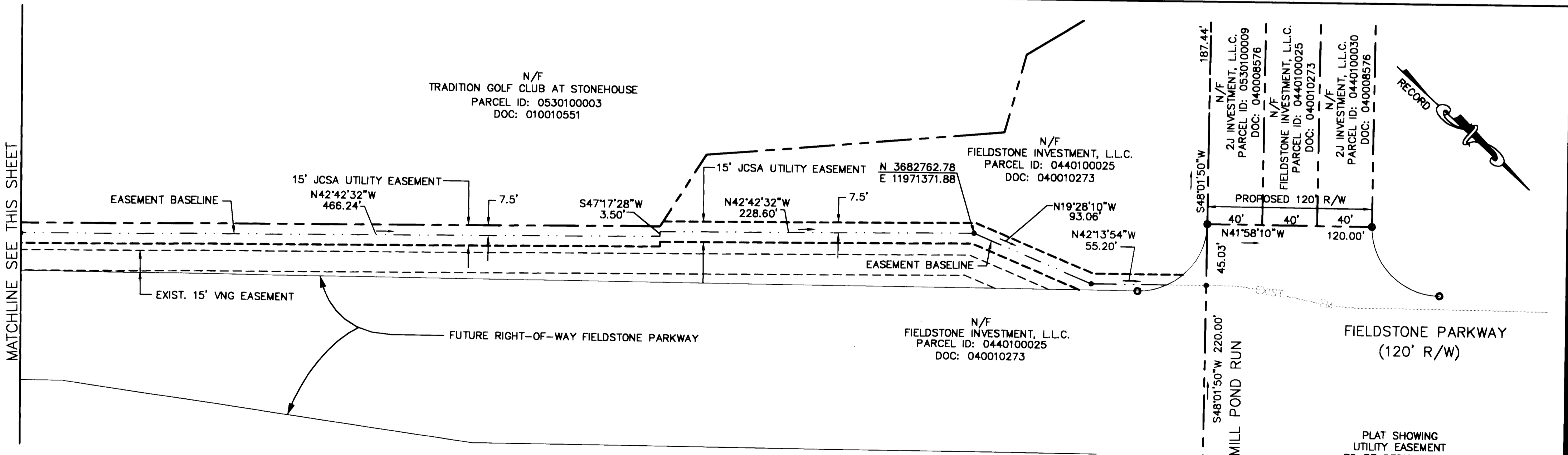
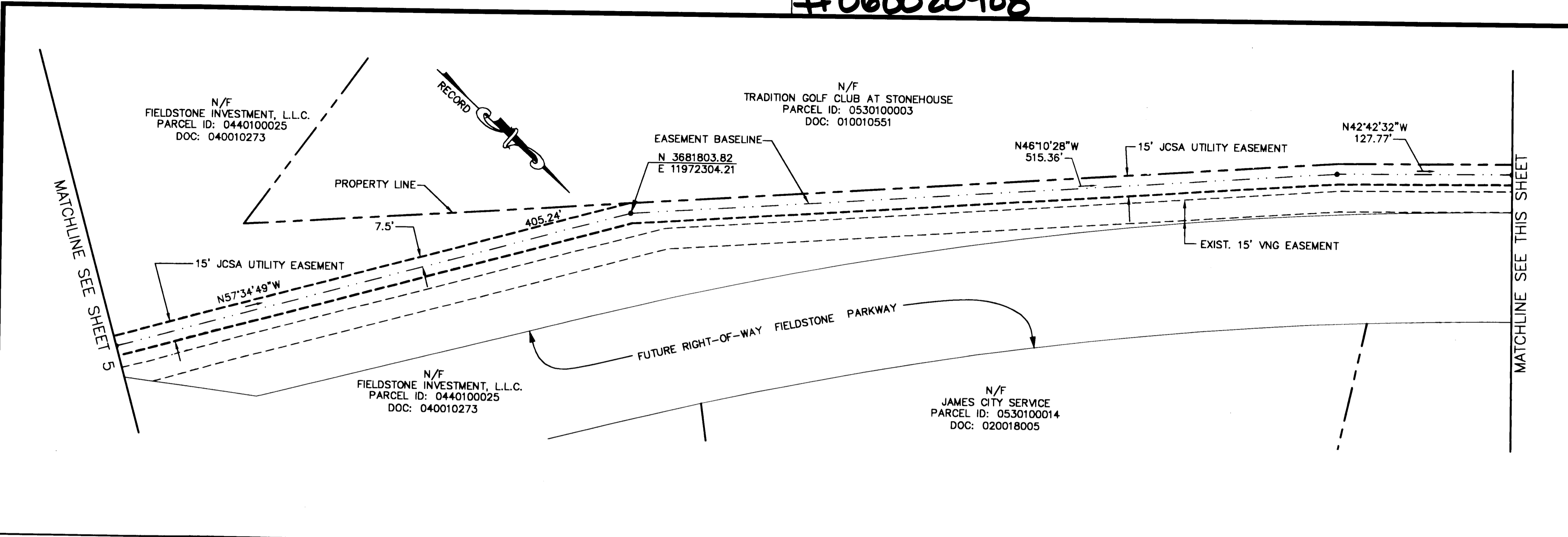
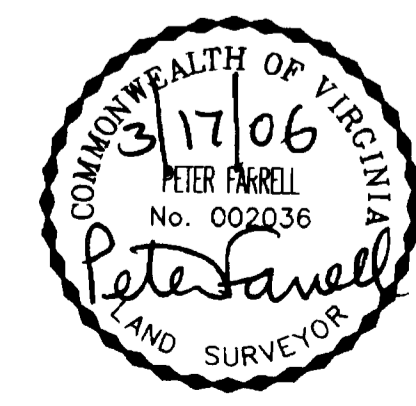
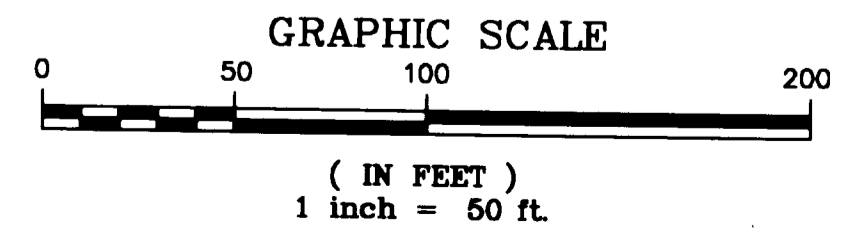


#060020908



City of Williamsburg & County of James City  
Circuit Court. This PLAT was recorded on  
August 18, 2006  
at 12:25 AM/PM, PB \_\_\_\_\_ PG \_\_\_\_\_  
DOCUMENT # 060020908  
BETSY B. WOOLRIDGE, CLERK  
Betsy B. Woolridge Clerk

6 Large/Small Plat(s) Recorded  
herewith as # 060020908



PLAT SHOWING  
UTILITY EASEMENT  
TO BE DEDICATED TO  
JAMES CITY SERVICE AUTHORITY  
AT STONEHOUSE  
STONEHOUSE DISTRICT  
JAMES CITY COUNTY, VIRGINIA  
DATE: 3/17/06 SCALE 1"=50'  
SHEET 6 OF 6

**LANDMARK**  
DESIGN GROUP

4029 Ironbound Road  
Suite 100  
Williamsburg, VA 23188  
Tel. (757) 253-2975  
Fax (757) 229-0049  
Email: lmdg@landmarkdg.com

DRAWN BY: CRO  
CHKD BY: DF

PROJ. NO.: 2002261-500.14  
DWG. NO.: 15301W