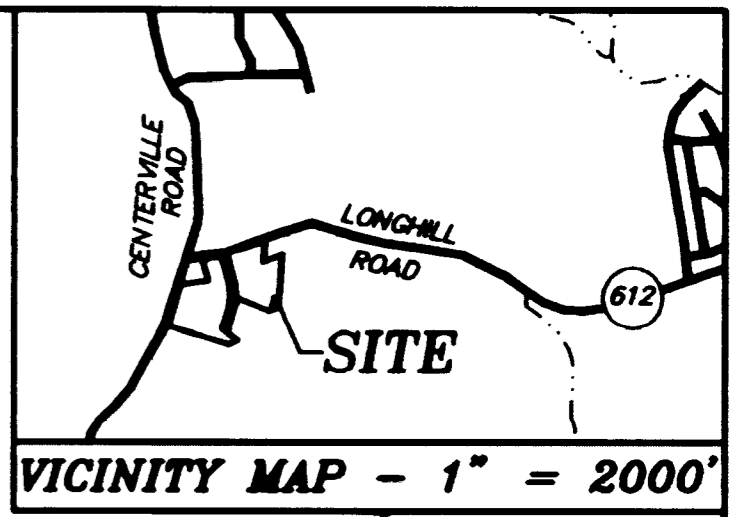
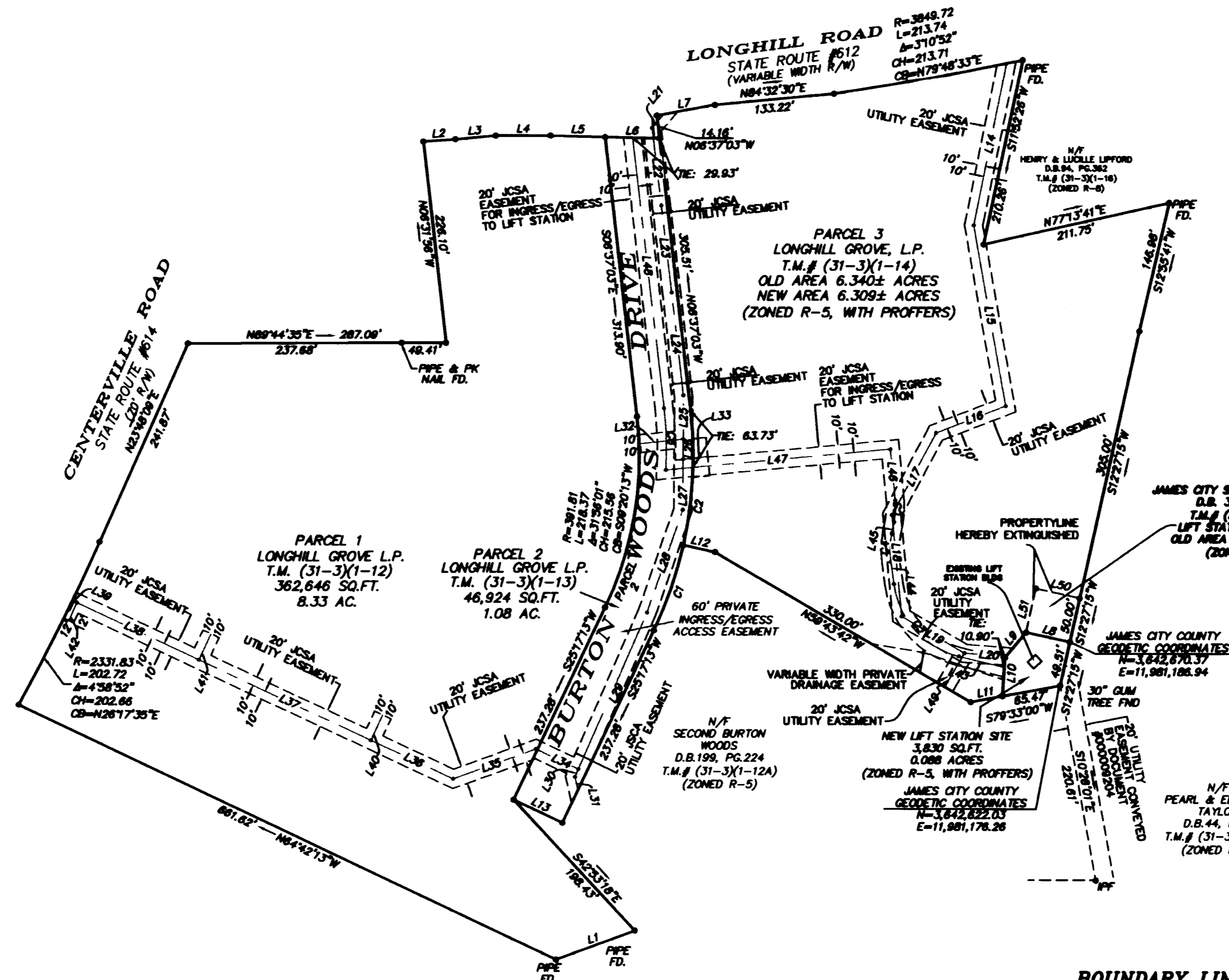


#060020549

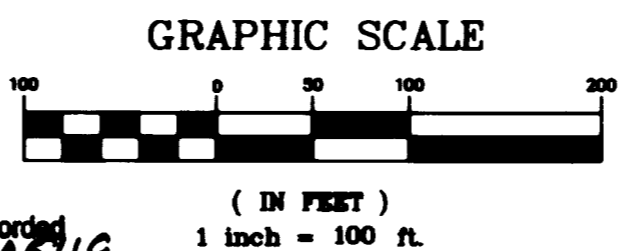
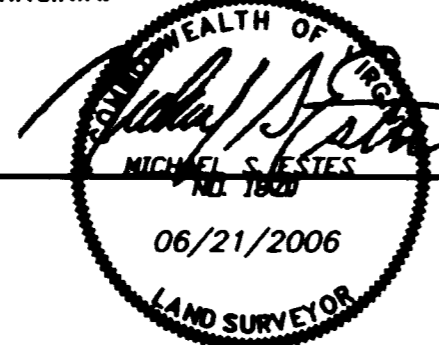


LINE	LENGTH	BEARING
L1	93.33	S69°40'02"W
L2	35.74	N86°06'34"E
L3	45.00	N84°48'53"E
L4	61.25	N89°49'53"E
L5	60.35	S88°39'29"E
L6	60.58	S88°39'29"E
L7	65.52	N79°33'00"E
L8	50.00	S77°32'45"E
L9	36.71	S39°45'39"W
L10	42.87	S03°41'23"W
L11	35.93	S79°33'00"W
L12	36.26	N77°28'46"W
L13	60.00	N64°42'47"W
L14	184.84	S11°17'37"W
L15	204.42	S10°10'22"E
L16	83.15	S68°53'53"W
L17	103.89	S28°05'18"W
L18	113.62	S05°31'00"E
L19	81.32	S59°43'42"E
L20	46.48	S85°53'09"E
L21	20.04	S39°57'17"W
L22	87.10	S06°55'27"E
L23	98.05	S06°49'06"E
L24	114.99	S06°37'23"E
L25	48.88	S00°07'45"W
L26	22.44	S00°07'45"W
L27	56.35	S00°07'45"W
L28	121.21	S19°03'50"W
L29	191.31	S23°32'17"W
L30	8.64	S23°32'17"W
L31	15.19	S12°33'25"E
L32	48.19	N83°52'42"E
L33	27.71	S83°52'42"W
L34	52.37	N64°59'20"W
L35	97.70	S70°00'40"W
L36	100.89	N64°59'20"W
L37	211.18	N64°59'20"W
L38	149.78	N64°59'20"W
L39	5.70	N64°47'52"W
L40	31.17	S25°00'40"W
L41	31.17	S25°00'40"W
L42	21.94	S25°00'40"W
L43	52.11	N76°23'27"W
L44	25.34	N07°46'27"W
L45	12.65	N11°15'54"E
L46	57.20	N05°25'37"W
L47	251.20	S84°34'23"W
L48	303.93	N06°43'38"W
L49	43.26	S30°16'18"W
L50	50.00	N77°32'45"W
L51	50.00	S12°27'15"W



CURVE	LENGTH	RADIUS	DELTA	CHORD	CHD. BEARING
C1	100.80	451.81	12°47'00"	100.59	N18°53'20"E
C2	150.98	451.81	19°08'49"	150.28	N02°57'43"E
C3	114.97	96.00	68°37'00"	108.22	S42°04'57"E
C4	31.90	96.00	19°02'21"	31.75	S01°44'43"W
C5	24.47	84.00	16°41'31"	24.39	N02°55'09"E
C6	68.95	400.00	9°52'33"	68.86	N01°47'22"W

**SURVEYOR'S CERTIFICATE**  
 I HEREBY CERTIFY THAT TO THE BEST OF MY KNOWLEDGE AND BELIEF, THIS PLAT COMPLIES WITH ALL REQUIREMENTS OF THE BOARD OF SUPERVISORS AND ORDINANCES OF THE COUNTY OF JAMES CITY, VIRGINIA.



2 Large/Small Plat(s) Recorded herewith as # 060020549

**PLAT OF BOUNDARY LINE ADJUSTMENT AND PROPERTY LINE EXTINGUISHMENT BETWEEN LONGHILL GROVE, L.P. AND JAMES CITY SERVICE AUTHORITY ALONG WITH 20' JCSA EASEMENT FOR INGRESS/EGRESS TO LIFT STATION AND 20' JCSA UTILITY EASEMENT**

POWHATAN DISTRICT  
 JAMES CITY COUNTY, VIRGINIA

REV: JUNE 21, 2006  
 REV: MAY 24, 2006  
 APRIL 19, 2006

**Townes**  
 SITE ENGINEERING  
 9850 LORI ROAD, SUITE 201  
 CHESTERFIELD, VIRGINIA 23832  
 PHONE: (804) 748-9011 FAX: (804) 748-2590  
 Email: townes@townes.com

City of Williamsburg & County of James City  
 Circuit Court: This PLAT was recorded on 16 August 2006 at 10:46 AM in PB PG DOCUMENT # 060020549  
 BETSY B. WOOLRIDGE, CLERK  
 Betsy B. Woolridge Clerk