

#060020156

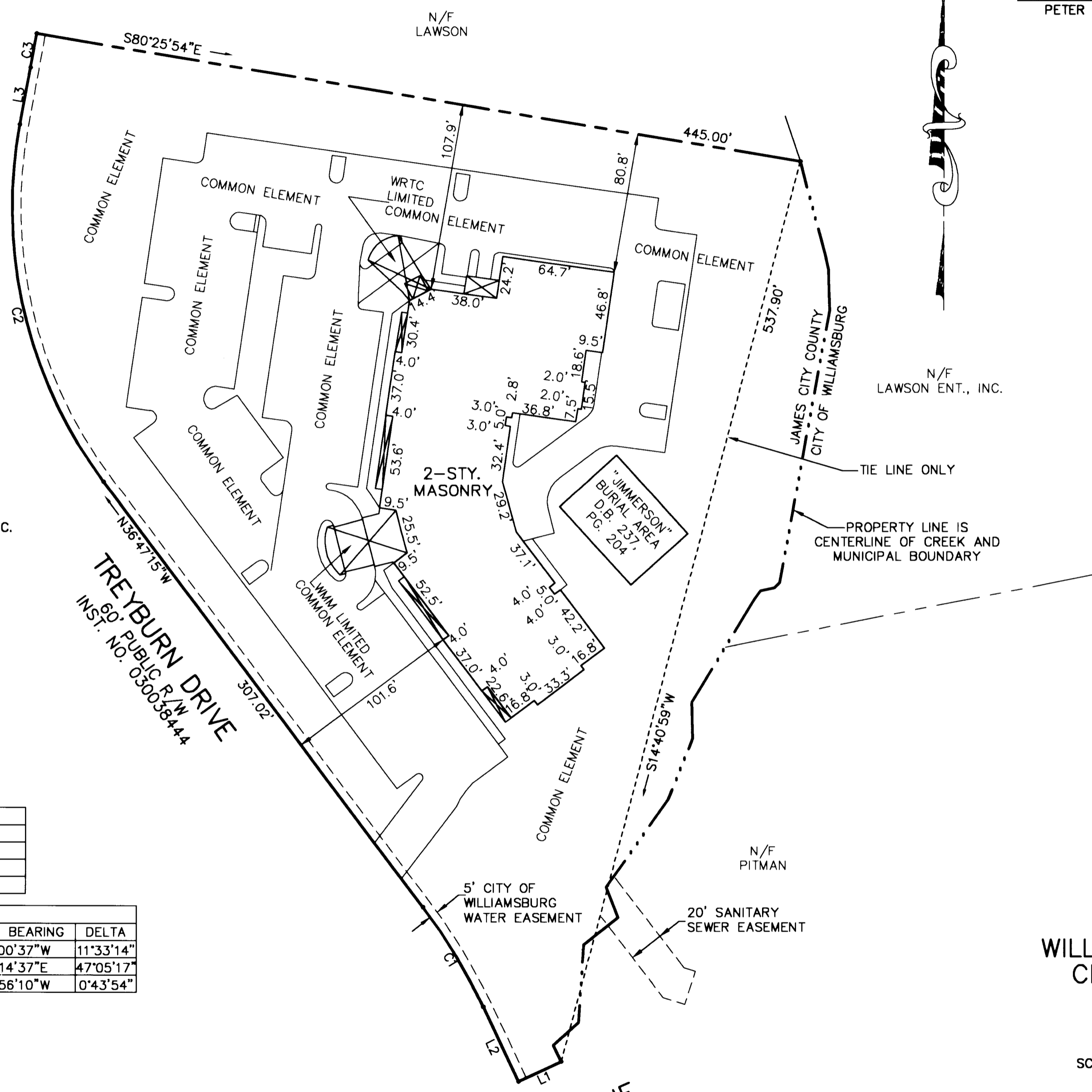
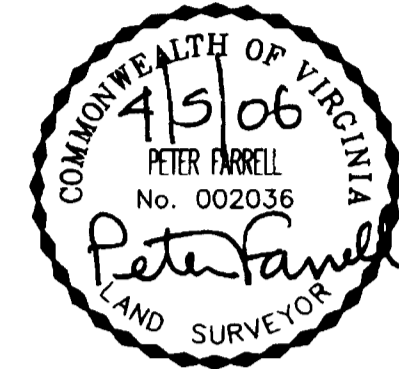
I CERTIFY THAT THIS PLAT IS ACCURATE AND COMPLIES WITH THE PROVISIONS OF SECTION 55-79.58(A) AND (B) OF THE CODE OF VIRGINIA AS AMENDED AND THAT ALL UNITS DEPICTED HEREON HAVE BEEN SUBSTANTIALLY COMPLETED.

*Peter Farrell*

4/5/06

PETER FARRELL, L.S.

DATE



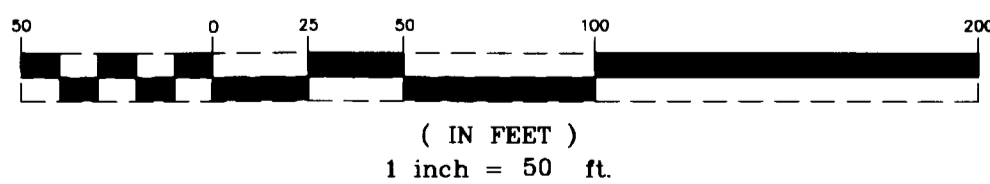
REFERENCES:  
P.B. 72, PG. 12-13  
INST. NO. 030038443  
INST. NO. 030038444

NOTES:  
1. THESE PLATS AND PLANS ARE RECORDED SIMULTANEOUSLY WITH THE SECOND AMENDMENT TO THE CONDOMINIUM DECLARATION OF WILLIAMSBURG PHYSICIANS' CENTER CONDOMINIUM.  
2. TOTAL AREA OF PROPERTY = 170,335 S.F., 3.9± AC.

LINE TABLE		
LINE	LENGTH	BEARING
L1	27.04'	S64°46'00"W
L2	47.78'	N25°14'00"W
L3	33.70'	N10°18'00"E

CURVE TABLE						
CURVE	LENGTH	RADIUS	TANGENT	CHORD	CHORD BEARING	DELTA
C1	67.56'	335.00'	33.89'	67.44'	N31°00'37"W	11°33'14"
C2	217.79'	265.00'	115.47'	211.71'	S13°14'37"E	47°05'17"
C3	20.00'	1565.96'	10.00'	20.00'	S09°56'10"W	0°43'54"

GRAPHIC SCALE



2 Large/Small Plat(s) Recorded herewith as # 060020156

UPDATED PLAT OF  
**WILLIAMSBURG PHYSICIANS' CENTER CONDOMINIUM**

JAMES CITY COUNTY, VIRGINIA

SCALE: 1"=50' DATE: APRIL 5, 2006

SHEET 1 OF 2

MONTICELLO AVENUE  
VARIABLE R/W

City of Williamsburg & County of James City  
Circuit Court: This PLAT was recorded on  
11 August 2006  
at 3:03 AM P.M. PB — PG —  
DOCUMENT # 060020156  
BETSY B. WOOLRIDGE, CLERK  
*Betsy B. Woolridge* Clerk

**LANDMARK DESIGN GROUP**  
Engineers • Planners • Surveyors  
Landscape Architects • Environmental Consultants

4029 Ironbound Road  
Suite 100  
Williamsburg, VA 23188  
Tel. (757) 253-2975  
Fax (757) 229-0049  
Email: lmdg@landmarkdg.com  
  
5544 Greenwich Road  
Suite 200  
Virginia Beach, VA 23462  
Tel. (757) 473-2000  
Fax (757) 497-7933  
Email: lmdg@landmarkdg.com

DRAWN BY: PF  
CHKD. BY: SAR

PROJ. NO.: 1940025-200.00  
DWG. NO.: 16164W