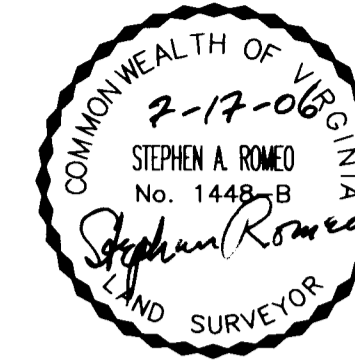


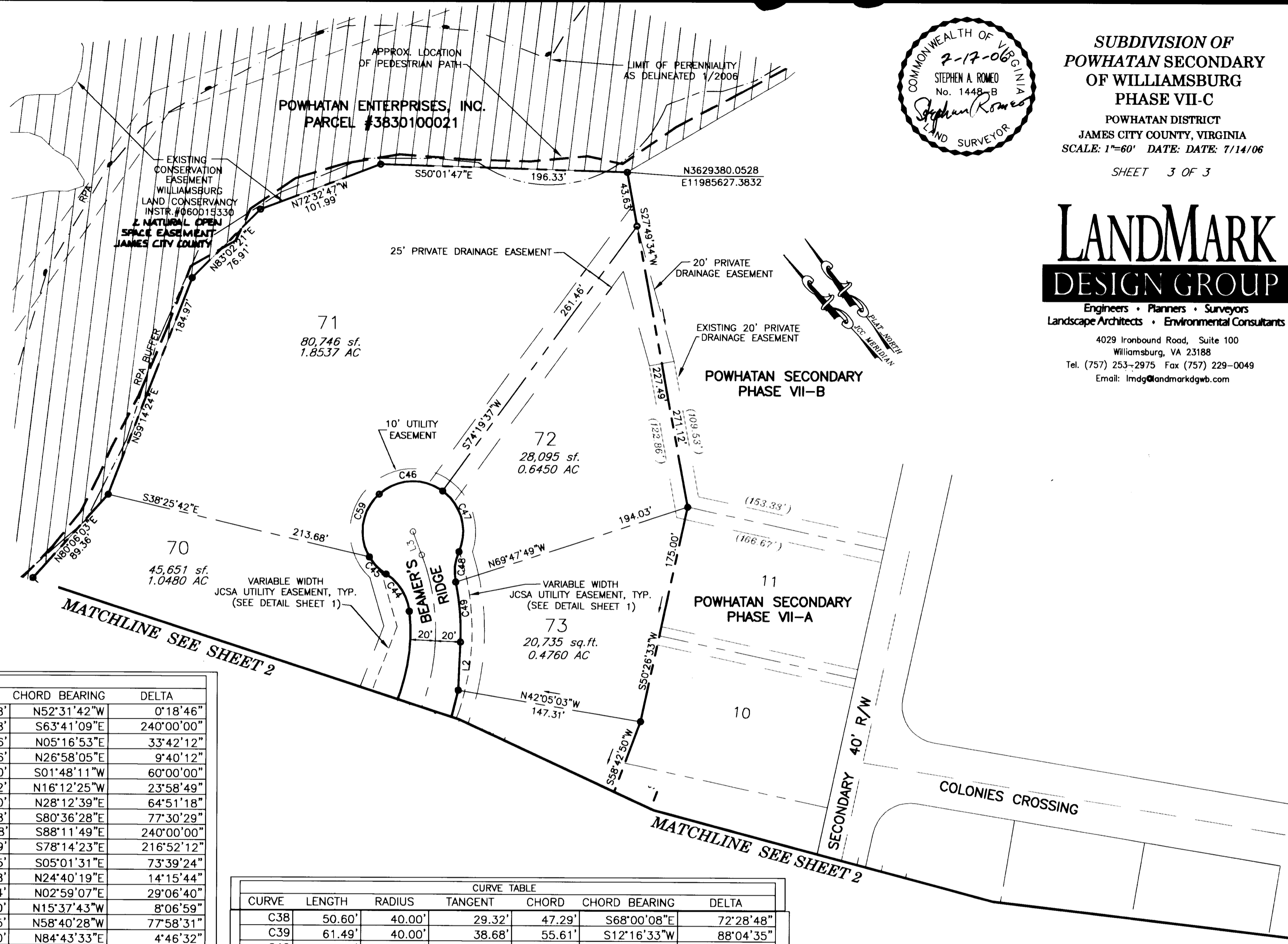
#060018285



**SUBDIVISION OF
POWHATAN SECONDARY
OF WILLIAMSBURG
PHASE VII-C**
POWHATAN DISTRICT
JAMES CITY COUNTY, VIRGINIA
SCALE: 1"=60' DATE: 7/14/06
SHEET 3 OF 3

**LANDMARK
DESIGN GROUP**
Engineers • Planners • Surveyors
Landscape Architects • Environmental Consultants

4029 Ironbound Road, Suite 100
Williamsburg, VA 23188
Tel. (757) 253-2975 Fax (757) 229-0049
Email: lmdg@landmarkdgb.com



LINE	LENGTH	BEARING
L1	21.01'	N31°48'11"E
L2	38.36'	S40°42'44"W
L3	19.88'	N17°25'05"E

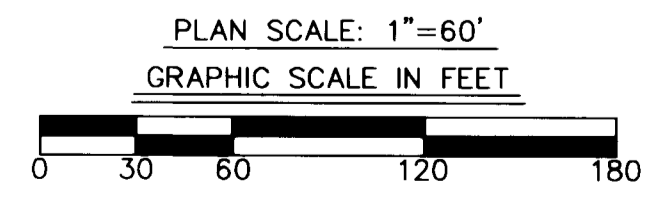
CURVE	LENGTH	RADIUS	TANGENT	CHORD	CHORD BEARING	DELTA
C1	15.78'	2889.79'	7.89'	15.78'	N52°31'42"W	0°18'46"
C2	167.55'	40.00'	69.28'	69.28'	S63°41'09"E	240°00'00"
C3	100.00'	170.00'	51.49'	98.56'	N05°16'53"E	33°42'12"
C4	28.69'	170.00'	14.38'	28.66'	N26°58'05"E	9°40'12"
C5	41.89'	40.00'	23.09'	40.00'	S01°48'11"W	60°00'00"
C6	16.74'	40.00'	8.50'	16.62'	N16°12'25"W	23°58'49"
C7	45.28'	40.00'	25.41'	42.90'	N28°12'39"E	64°51'18"
C8	54.11'	40.00'	32.11'	50.08'	S80°36'28"E	77°30'29"
C9	167.55'	40.00'	69.28'	69.28'	S88°11'49"E	240°00'00"
C10	151.40'	40.00'	120.00'	75.89'	S78°14'23"E	216°52'12"
C11	51.42'	40.00'	29.95'	47.95'	S05°01'31"E	73°39'24"
C12	32.36'	130.00'	16.26'	32.28'	N24°40'19"E	14°15'44"
C13	66.05'	130.00'	33.75'	65.34'	N02°59'07"E	29°06'40"
C14	18.42'	130.00'	9.22'	18.40'	N15°37'43"W	8°06'59"
C15	40.83'	30.00'	24.28'	37.75'	N58°40'28"W	77°58'31"
(C16)	17.50'	210.00'	8.76'	17.50'	N84°43'33"E	4°46'32"
C17	89.16'	210.00'	45.26'	88.50'	S85°29'54"E	24°19'39"
C18	80.34'	210.00'	40.67'	79.85'	S62°22'29"E	21°55'12"
C19	35.46'	30.00'	20.13'	33.43'	N85°16'37"W	67°43'28"
C20	75.67'	145.00'	38.72'	74.82'	N75°48'44"E	29°54'08"
C21	12.98'	100.00'	6.50'	12.97'	S87°02'40"W	7°26'16"
C22	21.08'	40.00'	10.79'	20.84'	S68°13'32"W	30°11'59"
C23	41.75'	40.00'	23.00'	39.88'	S23°13'32"W	59°48'01"
C24	29.29'	40.00'	15.33'	28.64'	N14°17'59"E	41°56'56"
C25	59.63'	40.00'	36.92'	54.26'	N77°59'02"E	85°25'10"
C26	47.80'	40.00'	27.22'	45.01'	S25°04'20"E	68°28'06"
C27	14.68'	40.00'	7.43'	14.60'	S19°40'43"W	21°02'00"
C28	54.10'	140.00'	27.39'	53.77'	S41°15'58"W	22°08'30"
C29	93.89'	140.00'	48.79'	92.14'	S71°33'00"W	38°25'34"
C30	166.51'	105.00'	106.59'	149.61'	N45°19'56"E	90°51'44"
C31	40.32'	30.00'	23.86'	37.35'	N38°35'50"W	76°59'48"
C32	36.72'	192.21'	18.42'	36.66'	S71°37'23"E	10°56'42"
C33	64.72'	220.00'	32.60'	64.49'	N74°34'43"W	16°51'22"
C34	128.84'	220.00'	66.32'	127.00'	N26°33'36"W	33°33'12"
C35	27.36'	220.00'	13.70'	27.34'	S59°52'38"W	7°07'33"
C36	41.89'	40.00'	23.09'	40.00'	S26°18'51"W	60°00'00"
C37	55.46'	40.00'	33.23'	51.12'	N36°02'10"E	79°26'37"

CURVE	LENGTH	RADIUS	TANGENT	CHORD	CHORD BEARING	DELTA
C38	50.60'	40.00'	29.32'	47.29'	S68°00'08"E	72°28'48"
C39	61.49'	40.00'	38.68'	55.61'	S12°16'33"W	88°04'35"
C40	22.33'	260.00'	11.17'	22.33'	S58°46'30"W	4°55'18"
C41	117.42'	260.00'	59.73'	116.43'	S74°10'26"W	25°52'34"
C42	121.33'	260.00'	61.79'	120.23'	N79°31'10"W	26°44'15"
C43	217.05'	152.21'	131.62'	199.12'	N72°59'55"E	81°42'05"
C44	36.28'	40.00'	19.50'	35.05'	N06°09'45"E	51°58'15"
C45	19.27'	40.00'	9.83'	19.09'	S06°01'15"E	27°36'15"
C46	54.64'	40.00'	32.55'	50.49'	N54°48'34"W	78°16'22"
C47	54.08'	40.00'	32.08'	50.06'	N23°03'36"E	77°27'59"
C48	24.74'	40.00'	12.78'	24.35'	S44°04'24"W	35°26'24"
C49	48.17'	192.21'	24.21'	48.04'	N33°31'58"E	14°21'32"
C50	69.55'	145.00'	35.46'	68.88'	N13°38'29"E	27°28'50"
C51	43.34'	30.00'	26.44'	39.67'	S14°00'29"E	82°46'46"
C52	161.08'	170.00'	87.16'	155.12'	S82°32'32"E	54°17'20"
(C53)	49.85'	170.00'	25.10'	49.67'	N78°42'48"E	16°48'01"
C54	15.58'	120.00'	7.80'	15.57'	S87°02'40"W	7°26'16"
C55	107.25'	83.33'	62.50'	100.00'	S46°27'20"W	73°44'23"
C56	71.48'	2889.79'	35.74'	71.48'	N53°23'36"W	1°25'02"
C57	91.12'	1397.39'	45.58'	91.11'	S52°14'02"E	3°44'10"
C58	194.52'	1397.51'	97.42'	194.36'	S46°22'40"E	7°58'30"
C59	54.64'	40.00'	32.55'	50.49'	S46°55'04"W	78°16'22"

(#) FOR PHASE LINE PURPOSES ONLY

3 Large/Small Plat(s) Recorded herewith as # 060018285

City of Williamsburg & County of James City
Circuit Court: This PLAT was recorded on
9:39 AM/PM-PB0 - PG -
at 060018285
DOCUMENT #
BETSY B. WOOLRIDGE, CLERK
Betsy B. Woolridge Clerk



DRAWN BY: LFW
CHKD. BY: SAR
PROJ. NO.: 1980232-000.57
DWG. NO.: 163.35W