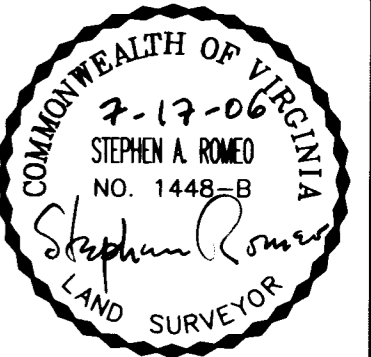
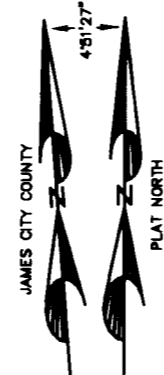
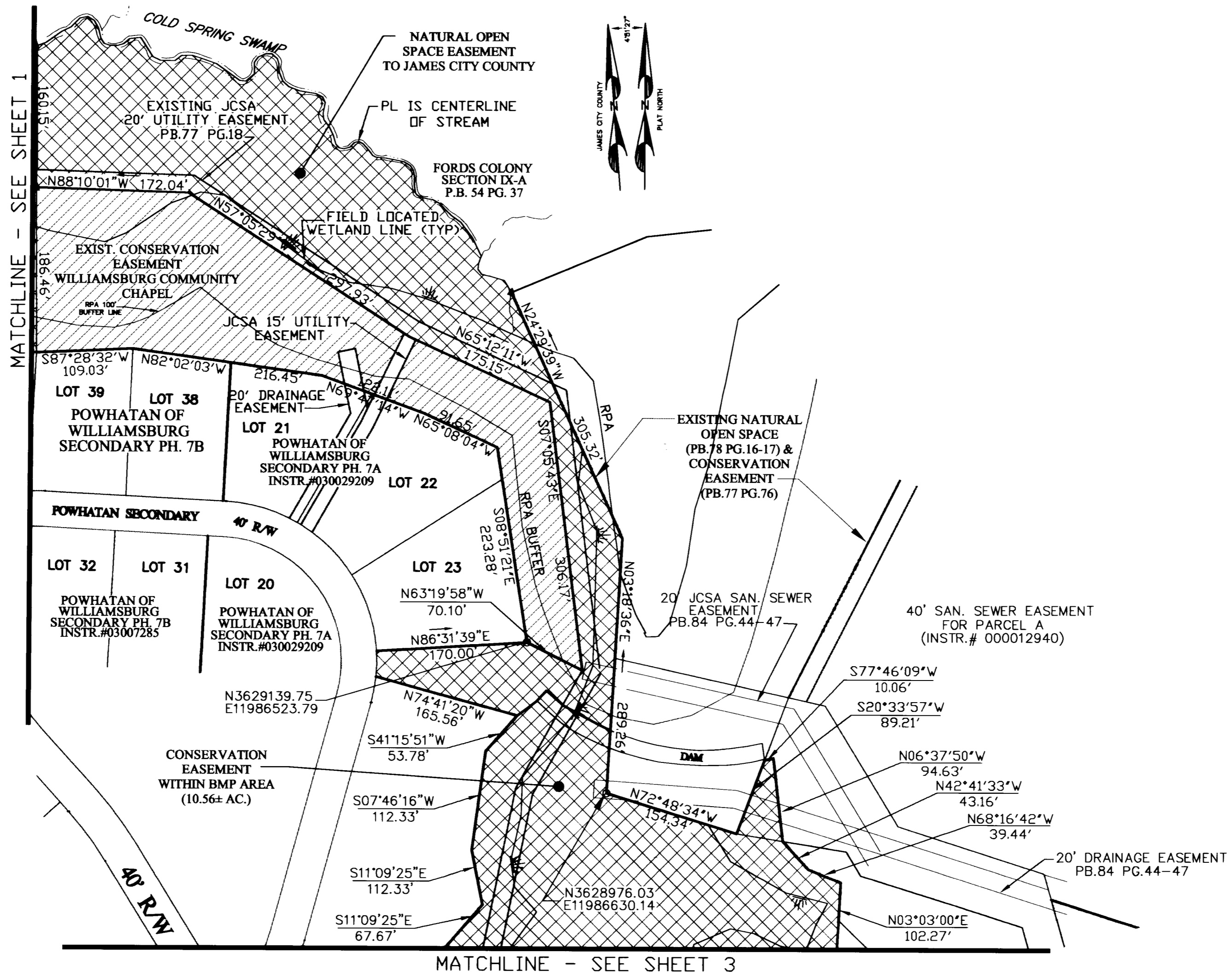


#060017423



4029 Ironbound Road  
 Suite 100  
 Williamsburg, VA 23188  
 Tel. (757) 253-2975  
 Fax (757) 229-0049  
 Email: [img@landmarkdg.com](mailto:img@landmarkdg.com)

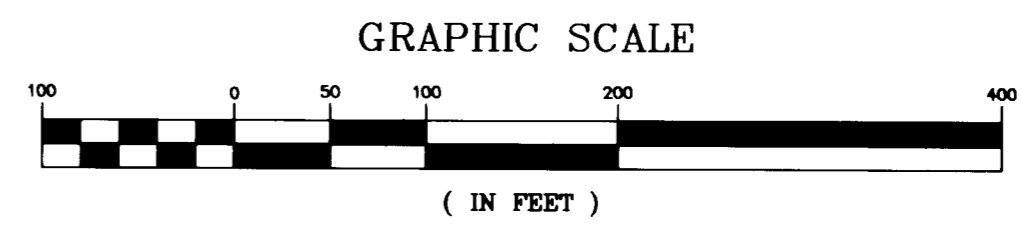
5544 Greenwich Road  
 Suite 200  
 Virginia Beach, VA 23462  
 Tel. (757) 497-2000  
 Fax (757) 497-7933  
 Email: [img@landmarkdg.com](mailto:img@landmarkdg.com)

**LANDMARK DESIGN GROUP**  
 Engineers • Planners • Surveyors  
 Landscape Architects • Environmental Scientists

EXHIBIT "A" SHOWING  
 PROPERTY OF  
 POWHATAN ENTERPRISES, INC.  
 NATURAL OPEN SPACE EASEMENT  
 TO BE DEDICATED TO  
 JAMES CITY COUNTY, VA  
 JAMES CITY COUNTY, VIRGINIA

City of Williamsburg & County of James City  
 Circuit Court: This PLAT was recorded on  
 19 July 2006  
 at 11:22 AM/PM, PB PG  
 DOCUMENT # 060017423  
 BETSY B. WOOLRIDGE, CLERK  
*Betsy B. Woolridge* Clerk

3 Large/Small Plat(s) Recorded  
 herewith as # 060017423



Designed:	Date:
-	7-14-06
Checked:	Scale:
SAR	1"=100'
File Mgr./Drawn:	CADD File name:
LFV	CONSERVWLC
Project Number:	Dwg. File No.:
1780041-148	W
Drawing Number	
	2