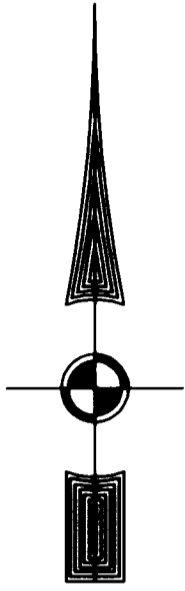


#060017217

EXIST. 20' JAMES CITY COUNTY SERVICE
AUTHORITY SAN. SEWER EASEMENT AS
SHOWN IN AS-BUILT LOCATION. D.B. 141 - PG. 388



MATCH LINE - SEE SHEET 5

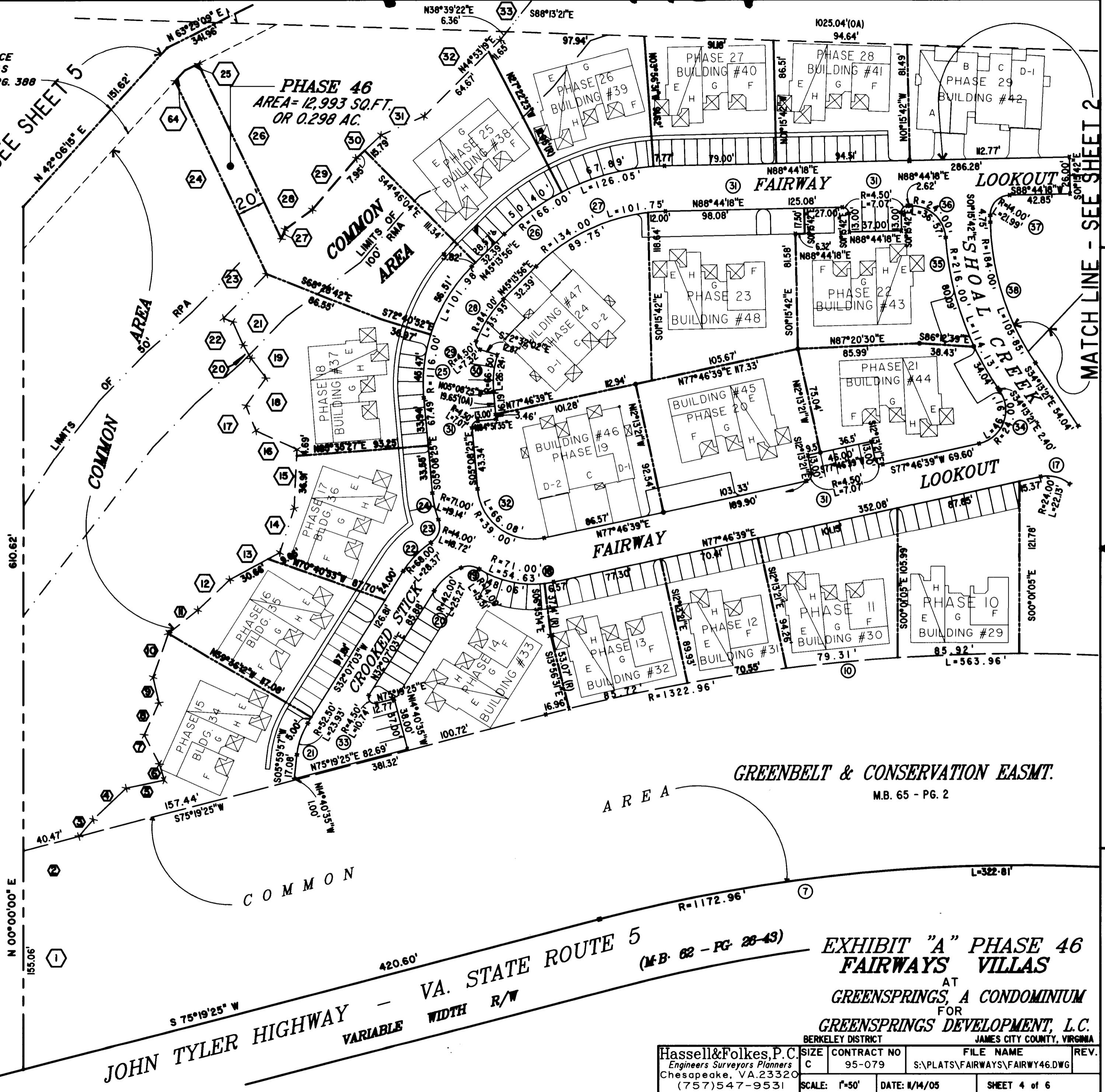
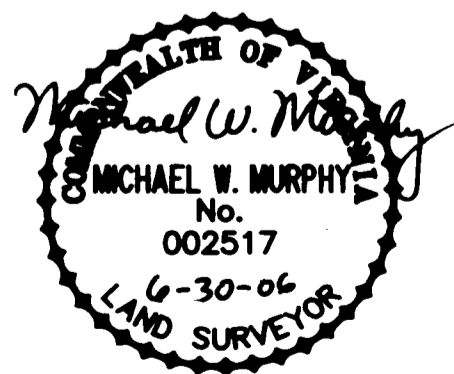
MATCH LINE - SEE SHEET 2

46-1-01-0-0001
"GREENSPRINGS PLANTATION"
(DB 322, PG 254)

6 Large/Small Plat(s) Recorded
herewith as # 060017217

City of Williamsburg & County of James City
Circuit Court. This PLAT was recorded on
19 July 2005
at 12:05 AM/PM, PG. 1
DOCUMENT # 060017217
BETSY B. WOOLRIDGE, CLERK

Betsy B. Woolridge Clerk



GREENBELT & CONSERVATION EASMT.
M.B. 65 - PG. 2

VA. STATE ROUTE 5
(M.B. 62 - PG. 28-43)
JOHN TYLER HIGHWAY - VARIABLE WIDTH R/W

EXHIBIT "A" PHASE 46
FAIRWAYS VILLAS
AT
GREENSPRINGS, A CONDOMINIUM
FOR
GREENSPRINGS DEVELOPMENT, L.C.
BERKELEY DISTRICT JAMES CITY COUNTY, VIRGINIA

Hassell & Folkes, P.C. Engineers Surveyors Planners Chesapeake, VA. 23320 (757)547-9531	SIZE C	CONTRACT NO 95-079	FILE NAME S:\PLATS\FAIRWAYS\FAIRWAY46.DWG	REV.
SCALE: 1"=50'	DATE: 1/14/05	SHEET 4 of 6		