

#060017217

City of Williamsburg & County of James City
Circuit Court: This PLAT was recorded on
18 July 2006
at 12:05 AM/PM, PB PG
DOCUMENT # 060017217
BETSY B. WOOLRIDGE, CLERK
Betsy B. Woolridge Clerk

46-01-0-0001 "GREENSPRINGS PLANTATION"

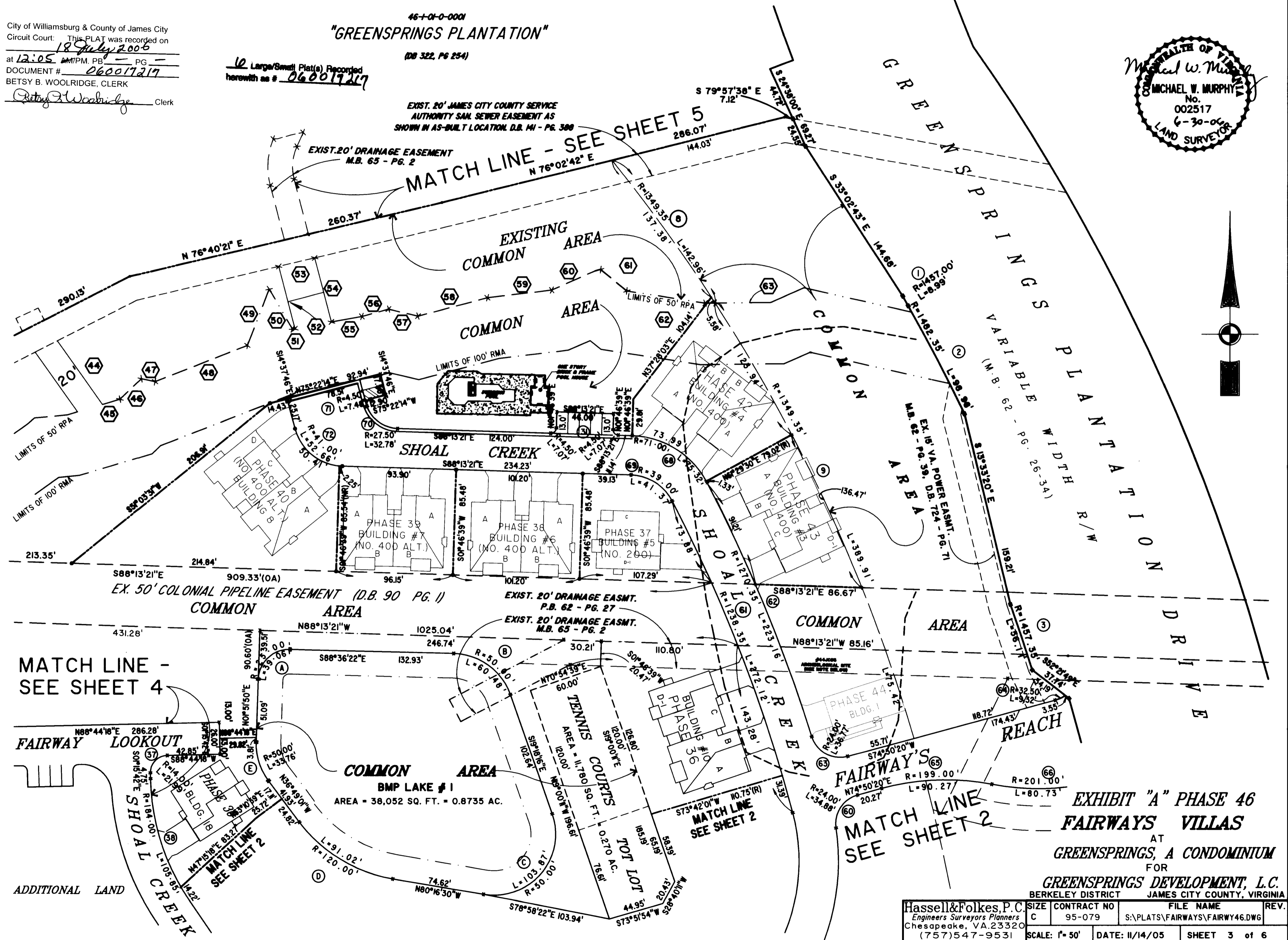
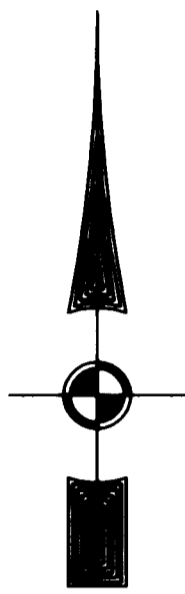
12 Large/Small Plat(s) Recorded
herewith as # 060017217

(DB 322, PG 254)

EXIST. 20' JAMES CITY COUNTY SERVICE
AUTHORITY SAN. SEWER EASEMENT AS
SHOWN IN AS-BUILT LOCATION, D.B. 44 - PG. 388

EXIST. 20' DRAINAGE EASEMENT
M.B. 65 - PG. 2

MATCH LINE - SEE SHEET 5



MATCH LINE -
SEE SHEET 4

MATCH LINE
SEE SHEET 2

**EXHIBIT "A" PHASE 46
FAIRWAYS VILLAS**
AT
GREENSPRINGS, A CONDOMINIUM
FOR
GREENSPRINGS DEVELOPMENT, L.C.
BERKELEY DISTRICT JAMES CITY COUNTY, VIRGINIA

Hassell & Folkes, P.C. Engineers Surveyors Planners Chesapeake, VA 23320 (757) 547-9531	SIZE C	CONTRACT NO 95-079	FILE NAME S:\PLATS\FAIRWAYS\FAIRWAY46.DWG	REV.
SCALE: 1" = 50'	DATE: 11/14/05	SHEET 3 of 6		