

# #060016516

## PLAT OF PROPERTY

TO BE CONVEYED TO  
DONALD L. HAZELWOOD, INC.,  
BEING

348.93 ACRES

LOCATED: STONEHOUSE DISTRICT,  
JAMES CITY COUNTY, VIRGINIA

DATE: DECEMBER 15, 2005 SCALE: 1" = 200'

MITCHELL-WILSON ASSOCIATES, P.C.

CIVIL ENGINEERS & LAND SURVEYORS

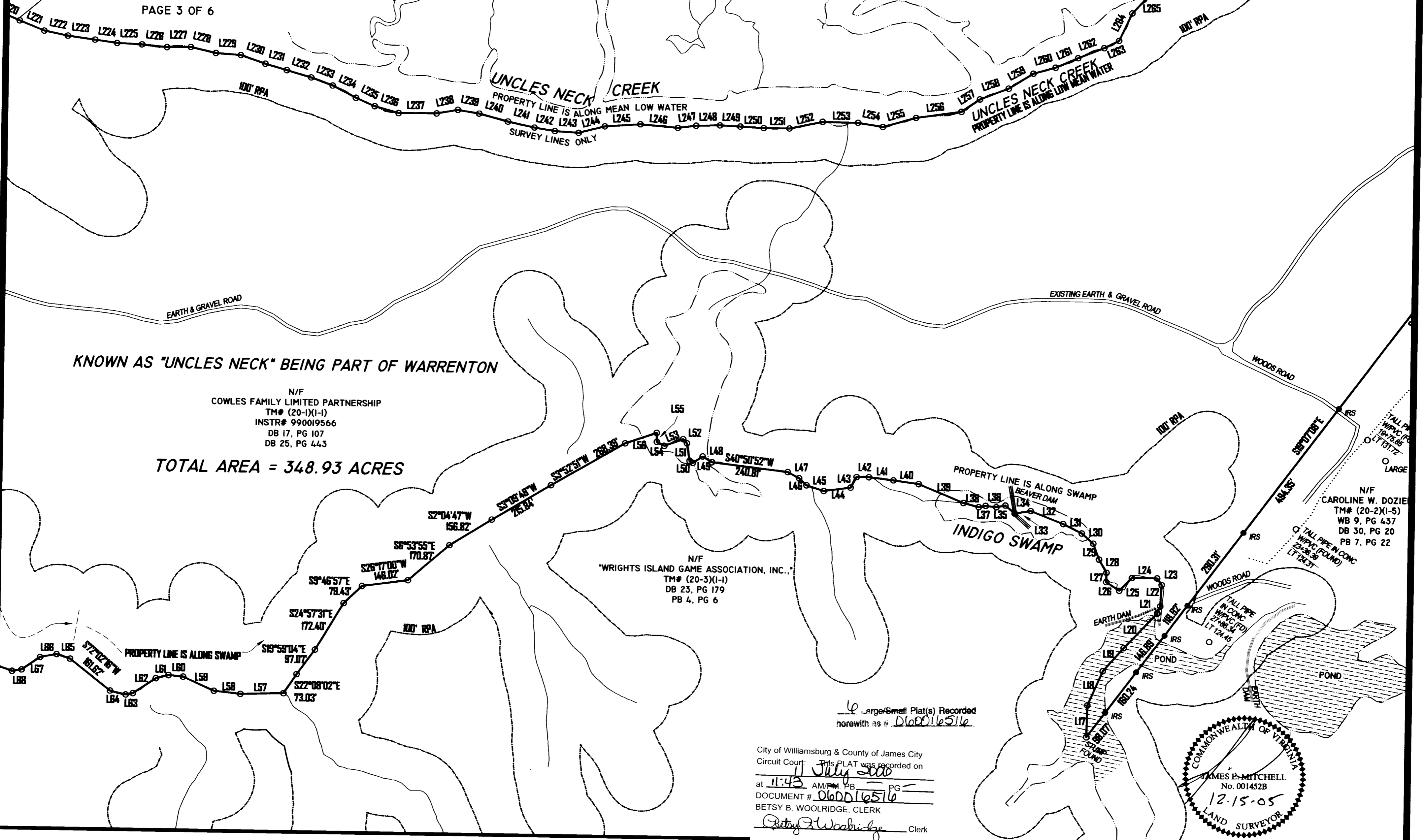
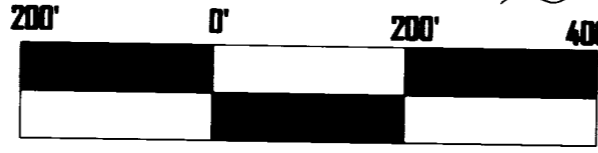
720 MAIN STREET, SUITE 112

P.O. BOX 1269

WEST POINT, VIRGINIA 23181

(804) 843-9744

PAGE 3 OF 6



KNOWN AS "UNCLES NECK" BEING PART OF WARRENTON

N/F  
COWLES FAMILY LIMITED PARTNERSHIP  
TM# (20-1)(1-1)  
INSTR# 990019566  
DB 17, PG 107  
DB 25, PG 443

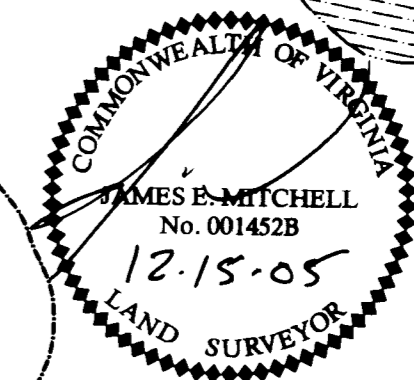
TOTAL AREA = 348.93 ACRES

N/F  
"WRIGHTS ISLAND GAME ASSOCIATION, INC."  
TM# (20-3)(1-1)  
DB 23, PG 179  
PB 4, PG 6

N/F  
CAROLINE W. DOZIE  
TM# (20-2)(1-5)  
WB 9, PG 437  
DB 30, PG 20  
PB 7, PG 22

Large/Small Plat(s) Recorded  
herewith as # 060016516

City of Williamsburg & County of James City  
Circuit Court: This PLAT was recorded on  
11 July 2006  
at 11:43 AM/PM PB PG  
DOCUMENT # 060016516  
BETSY B. WOOLRIDGE, CLERK  
*Betsy B. Woolridge* Clerk



5148