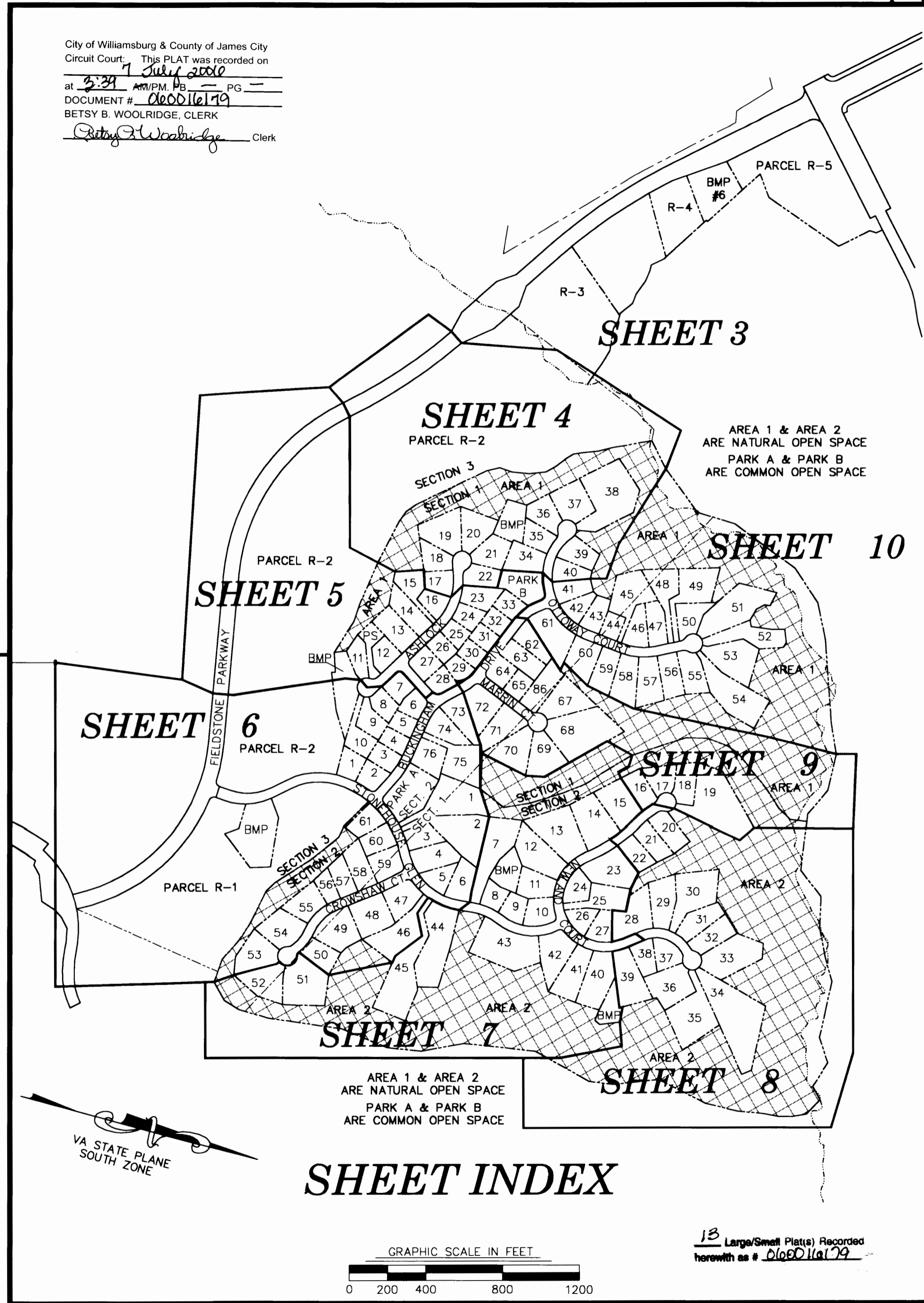
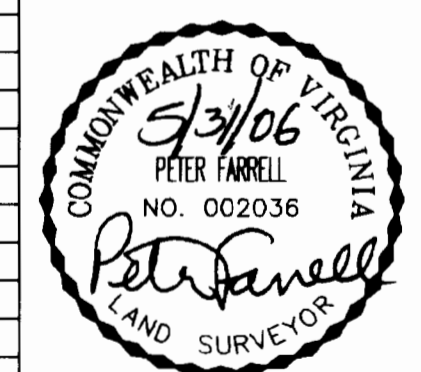


#060016179

City of Williamsburg & County of James City  
 Circuit Court: This PLAT was recorded on  
 at 2:31 PM, July 2006 PG --  
 DOCUMENT # 060016179  
 BETSY B. WOOLRIDGE, CLERK  
 Betsy B. Woolridge Clerk



LINE TABLE								
LINE	LENGTH	BEARING	LINE	LENGTH	BEARING	LINE	LENGTH	BEARING
L1	319.60'	S34°46'47"E	L83	45.43'	S59°02'36"E	L135	111.47'	S33°18'25"W
L2	114.13'	S85°24'05"E	L84	62.20'	S80°19'22"E	L136	109.99'	N58°39'13"W
L3	107.70'	N34°47'21"W	L85	57.84'	N04°49'34"E	L137	105.00'	S58°39'13"E
L4	175.00'	S56°35'26"E	L86	46.18'	N04°50'29"E	L138	15.55'	S58°39'13"E
L5	242.31'	N56°35'26"W	L87	99.60'	S41°30'10"E	L139	44.72'	N71°14'21"E
L6	115.66'	N76°49'24"W	L88	111.28'	S76°30'10"E	L140	30.10'	S71°14'21"W
L7	183.44'	S39°08'37"E	L89	46.04'	N60°26'10"E	L141	15.42'	S58°39'13"E
L8	872.57'	N79°57'44"E	L90	22.99'	S60°26'10"W	L142	100.00'	S58°39'13"E
L9	872.57'	N79°57'44"E	L91	23.05'	S60°26'10"W	L143	125.00'	S58°39'13"E
L10	59.98'	S85°08'29"E	L92	46.93'	N06°08'44"W	L144	151.61'	S58°39'13"E
L11	14.45'	N27°51'59"W	L93	19.01'	S06°08'44"E	L145	25.00'	S58°39'13"E
L12	11.42'	S27°51'59"E	L94	65.95'	N06°08'44"W	L146	59.41'	N58°39'13"W
L13	128.32'	N31°40'32"E	L95	12.33'	S38°19'05"E	L147	104.48'	N58°39'13"W
L14	59.75'	N85°00'07"E	L96	88.43'	N38°19'05"W	L148	101.51'	N33°18'25"E
L15	83.19'	N29°25'36"W	L97	29.08'	S38°19'05"E	L149	75.45'	N33°18'25"E
L16	83.19'	N20°46'55"W	L98	71.67'	S38°19'05"E	L150	13.49'	S81°20'21"E
L17	44.89'	N23°50'25"W	L99	92.21'	N63°31'42"W	L151	104.00'	S81°20'21"E
L18	44.89'	N44°14'36"W	L100	118.48'	N81°20'21"W	L152	88.70'	S81°20'21"E
L19	68.88'	N54°33'51"W	L101	30.00'	N81°20'21"W	L153	92.21'	S63°31'42"E
L20	59.34'	N44°41'23"W	L102	57.72'	N81°20'21"W	L154	87.44'	S24°25'09"W
L21	89.28'	N20°59'50"W	L103	93.92'	N43°50'52"W	L155	44.89'	N43°38'43"W
L22	89.28'	N09°05'20"W	L104	16.70'	N43°50'52"W	L156	174.23'	S37°23'08"E
L23	67.71'	N04°57'44"E	L105	154.13'	N22°05'29"E	L157	60.05'	S37°23'08"E
L24	67.71'	N28°55'22"W	L106	140.70'	N22°05'29"E	L158	38.14'	S37°23'08"E
L25	62.35'	N50°40'20"W	L107	82.60'	S22°05'29"W	L159	99.32'	S37°23'08"E
L26	62.35'	N69°39'14"W	L108	105.13'	N22°05'29"E	L160	96.82'	S37°23'08"E
L27	88.15'	N86°07'40"W	L109	100.00'	N22°05'29"E	L161	44.89'	S43°38'43"E
L28	191.40'	N72°39'37"W	L110	110.64'	N67°54'31"W	L162	97.06'	S80°41'14"W
L29	101.66'	S71°23'24"W	L111	105.00'	N67°54'31"W	L163	137.64'	N03°24'31"E
L30	20.75'	N14°45'50"W	L112	97.69'	S67°54'31"E	L164	20.02'	S51°04'48"W
L31	200.78'	S67°49'44"W	L113	50.49'	N37°50'37"W	L165	57.70'	N86°18'54"E
L32	164.29'	S58°14'25"W	L114	102.92'	N06°17'02"E	L166	39.75'	S58°54'02"E
L33	186.67'	N89°07'24"E	L115	95.15'	N06°17'02"E	L167	91.88'	S43°56'49"E
L34	257.24'	S88°41'07"E	L116	103.26'	N26°54'55"W	L168	27.50'	N55°39'20"W
L35	39.47'	N35°09'54"E	L117	33.37'	N26°54'55"W	L169	115.84'	N55°39'20"W
L36	129.59'	N52°41'20"E	L118	7.58'	S26°54'55"E	L170	98.30'	N68°03'14"W
L37	103.29'	S70°52'32"E	L119	30.13'	N26°54'55"W	L171	101.10'	N70°48'17"W
L38	225.00'	S58°39'13"E	L120	30.13'	S26°54'55"E	L172	82.84'	N70°48'17"W
L39	175.83'	S85°31'42"W	L121	68.79'	S26°54'55"E	L173	122.92'	N63°19'39"E
L40	148.88'	N18°53'42"W	L122	12.17'	S06°17'02"W	L174	118.65'	N61°28'33"E
L41	120.29'	S82°06'26"E	L123	25.00'	S06°17'02"W	L175	36.23'	N81°18'23"W
L42	103.79'	S01°53'59"W	L124	100.00'	S06°17'02"W	L176	18.37'	S71°18'45"W
L43	120.24'	S89°00'46"E	L125	60.89'	S06°17'02"W	L177	118.72'	N66°44'42"E
L44	97.83'	N10°17'32"W	L126	50.49'	S37°50'37"E	L178	109.84'	S13°19'51"E
L45	93.67'	S79°45'38"E	L127	23.68'	S67°54'31"E	L179	140.54'	S70°09'19"W
L46	43.14'	S86°21'52"W	L128	105.00'	S67°54'31"E	L180	144.34'	N34°29'52"W
L47	69.70'	N62°17'11"E	L129	105.00'	S67°54'31"E	L181	159.10'	N60°33'11"E
L48	26.61'	S29°57'28"E	L130	105.00'	S67°54'31"E	L182	153.04'	N07°18'33"E
L49	75.34'	N03°04'43"E	L131	9.74'	S67°54'31"E	L183	130.00'	N01°46'49"E
L50	133.30'	N88°33'03"E	L132	19.55'	S43°50'52"E	L184	58.73'	N83°37'21"W
L51	128.97'	S27°53'21"E	L133	91.06'	S43°50'52"E	L185	32.40'	S27°54'16"W
L52	30.00'	N16°23'20"W	L134	68.91'	S33°18'25"W	L186	105.43'	S21°51'50"E
L53	75.00'	S78°04'18"E	L135	111.47'	S33°18'25"W	L187	80.34'	N85°17'07"E
L54	29.00'	S07°24'53"E						
L55	48.00'	S44°30'18"E						
L56	65.00'	S73°36'50"E						
L57	35.00'	N64°12'58"E						
L58	104.00'	S06°51'29"E						
L59	71.77'	N15°37'17"W						
L60	68.84'	N68°10'00"E						
L61	29.00'	S74°40'18"E						
L62	126.00'	S19°44'35"E						
L63	45.00'	N81°22'56"W						
L64	96.69'	S11°32'54"E						
L65	127.65'	S37°15'18"E						
L66	127.65'	S49°21'10"E						
L67	156.48'	S45°30'16"E						
L68	114.50'	S13°17'07"E						
L69	114.96'	S06°28'14"W						
L70	69.13'	S22°18'06"W						
L71	116.64'	S42°05'08"W						
L72	85.16'	S30°33'24"W						
L73	87.29'	S08°07'04"E						
L74	39.26'	N81°52'56"E						
L75	79.06'	S46°35'20"W						
L76	105.20'	N61°16'43"W						
L77	75.23'	N24°03'24"W						
L78	68.47'	N15°53'04"W						
L79	77.77'	N02°50'55"W						
L80	140.69'	N09°48'22"W						
L81	91.50'	N17°07'33"E						
L82	64.24'	S59°25'04"E						



**SUBDIVISION PLAT SHOWING  
 STONEHOUSE GLEN,  
 SECTIONS 1 & 2  
 AND RIGHT OF WAY OF  
 FIELDSTONE PARKWAY  
 BEING A SUBDIVISION OF THE PROPERTY OF  
 FIELDSTONE INVESTMENT, LLC  
 AND STONEHOUSE GLEN, LLC**

STONEHOUSE DISTRICT, JAMES CITY COUNTY, VIRGINIA  
 DATE: 05/31/06 SCALE: 1"=400'  
 SHEET 2 OF 13

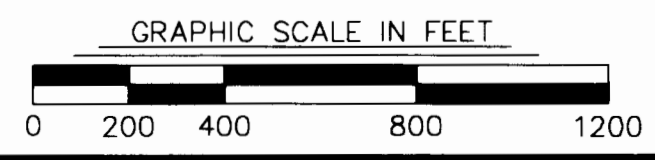
**LANDMARK  
 DESIGN GROUP**  
 Engineers • Planners • Surveyors  
 Landscape Architects • Environmental Consultants

4029 Ironbound Road  
 Suite 100  
 Williamsburg, VA 23188  
 Tel. (757) 253-2975  
 Fax (757) 229-0049  
 Email: lmdg@landmarkdg.com

5544 Greenwich Road  
 Suite 200  
 Virginia Beach, VA 23462  
 Tel. (757) 473-2000  
 Fax (757) 497-7933  
 Email: lmdg@landmarkdg.com

DRAWN BY: PF/INT  
 CHKD. BY: AST

PROJ. NO.: 2002261-504.06  
 DWG. NO.: 16673W



13 Large/Small Plat(s) Recorded  
 herewith as # 060016179