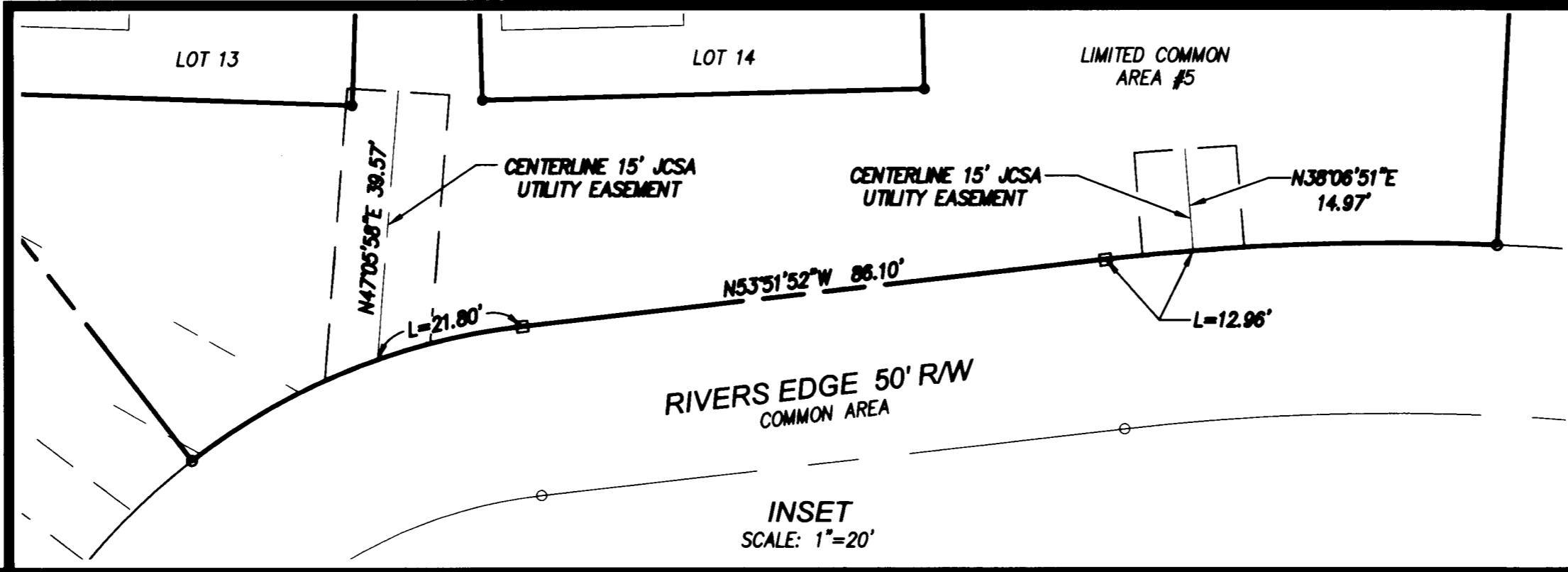
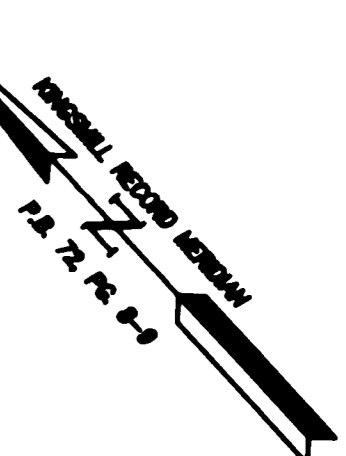
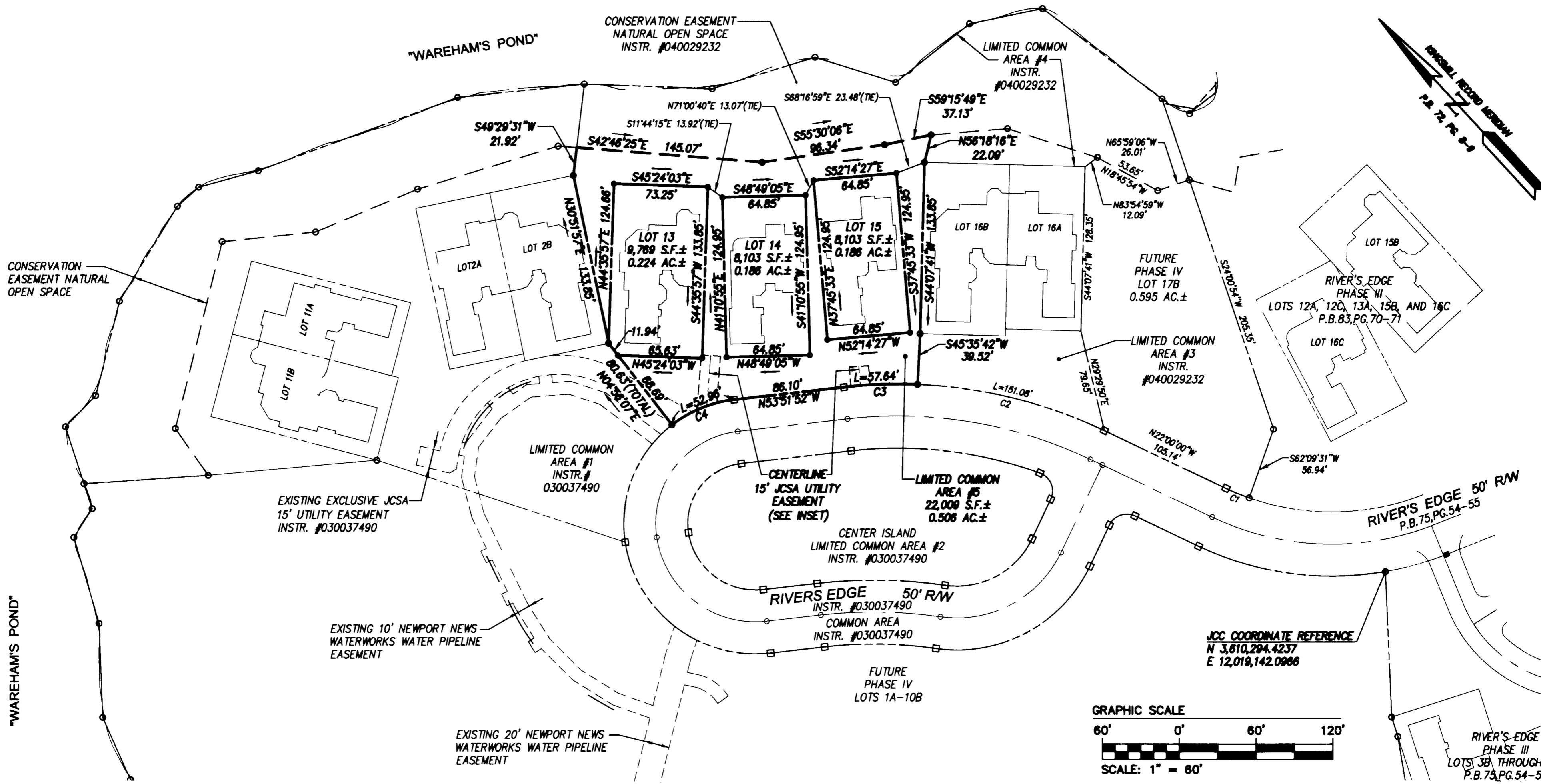


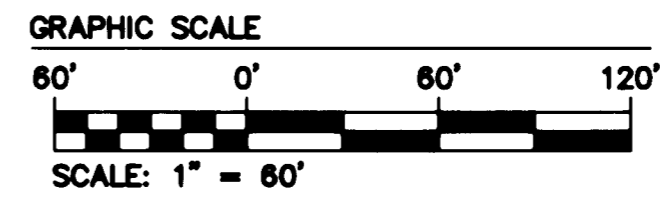
#060015882

S:\jobs\7753\05-4\MRE\dwg\Plats\7753-5-4\_P05\_Lots13-15.dwg, 6/30/2006 1:13:23 PM

EAW 05.11.03-10:44 7753-5-4-P04.dwg



JCC COORDINATE REFERENCE  
N 3,610,294.4237  
E 12,019,142.0966



RIGHT-OF-WAY CURVE TABLE						
CURVE	DELTA	RADIUS	ARC	TANGENT	CHORD	CHORD BEARING
C1	05°30'29"	193.49'	19.73'	9.87'	19.72'	N24°35'15"W
C2	23°03'53"	375.30'	151.08'	76.58'	150.06'	N33°31'56"W
C3	08°48'00"	375.30'	57.64'	28.88'	57.59'	N49°27'52"W
C4	31°12'01"	97.26'	52.96'	27.15'	52.31'	N69°27'52"W

<sup>2</sup> Large/Small Plat(s) Recorded herewith as # 060015882

5248 Olde Towne Road, Suite 1  
Williamsburg, Virginia 23188  
(757) 253-0040  
Fax (757) 220-8994

PLAT OF SUBDIVISION  
**RIVER'S EDGE**  
PHASE IV  
LOTS 13, 14, AND 15  
OWNER/DEVELOPER: BUSCH PROPERTIES, INC.  
ROBERTS DISTRICT JAMES CITY COUNTY VIRGINIA

City of Williamsburg & County of James City Circuit Court:		
This PLAT was recorded on 6 July 2006		
at 10:55 AM/PM PB - PG -		
DOCUMENT # 060015882		
BETSY B. WOOLRIDGE, CLERK		
<i>Betsy B. Woolridge</i> Clerk		
No.	DATE	REVISION / COMMENT / NOTE
1	6/14/06	REVISED NOTES & AREA TABULATION/PER KCSA
		BY
		RDM

Designed AES	Drawn EAW
Scale 1"=60'	Date 3/27/06
Project No. 7753-5-4	
Drawing No. 2 OF 2	