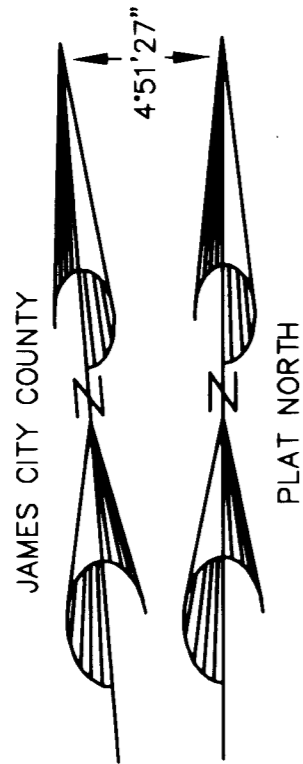
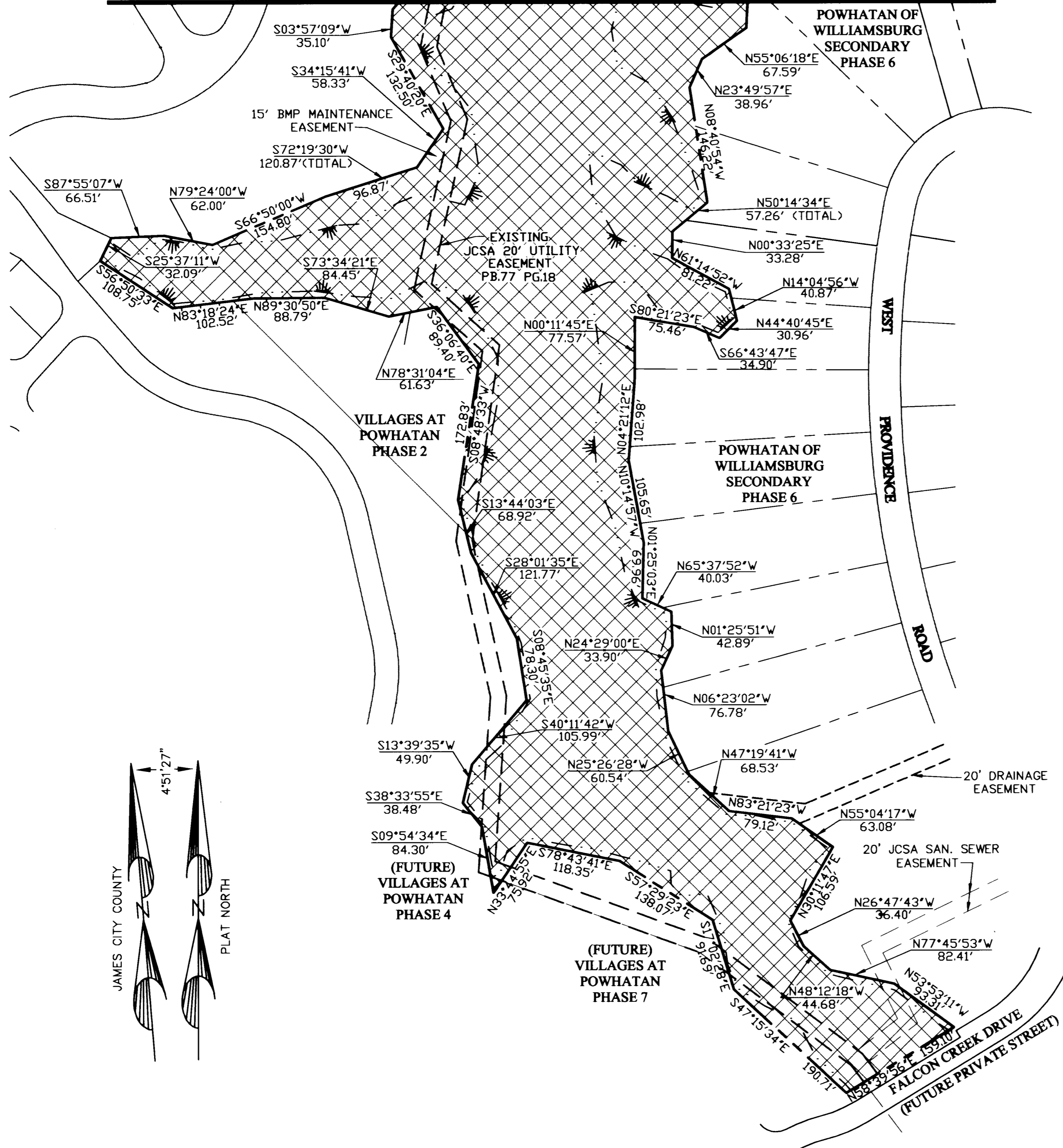


#060015330

MATCHLINE - SEE SHEET 2



City of Williamsburg & County of James City
 Circuit Court: This PLAT was recorded on
27 June 2006
 at 10:43 AM/PM, PB — PG —
 DOCUMENT # 060015330
 BETSY B. WOOLRIDGE, CLERK
Betsy B. Woolridge Clerk

GRAPHIC SCALE



(IN FEET)

3 Large/Small Plat(s) Recorded
 herewith as # 060015330



4029 Ironbound Road
 Suite 100
 Williamsburg, VA 23186
 Tel: (757) 253-2875
 Fax: (757) 229-0049
 Email: imdg@landmarkdg.com

5544 Greenwich Road
 Suite 200
 Virginia Beach, VA 23462
 Tel: (757) 473-2000
 Fax: (757) 497-7933
 Email: imdg@landmarkdg.com

LANDMARK
DESIGN GROUP
 Engineers • Planners • Surveyors
 Landscape/Architects • Environmental Scientists

EXHIBIT "A" SHOWING
 PROPERTY OF
 POWHATAN ENTERPRISES, INC.
 CONSERVATION EASEMENT
 TO BE DEDICATED TO
 WILLIAMSBURG LAND CONSERVANCY
 JAMES CITY COUNTY, VIRGINIA

Designed:	Date:
-	5/30/06
Checked:	Scale:
SAR	1"=100'
File Mgr./Drawn:	CADD File name:
LFV	CONSERVWLC
Project Number:	Dwg. File No.:
1780041-148.99	17210 W
Drawing Number	
	3