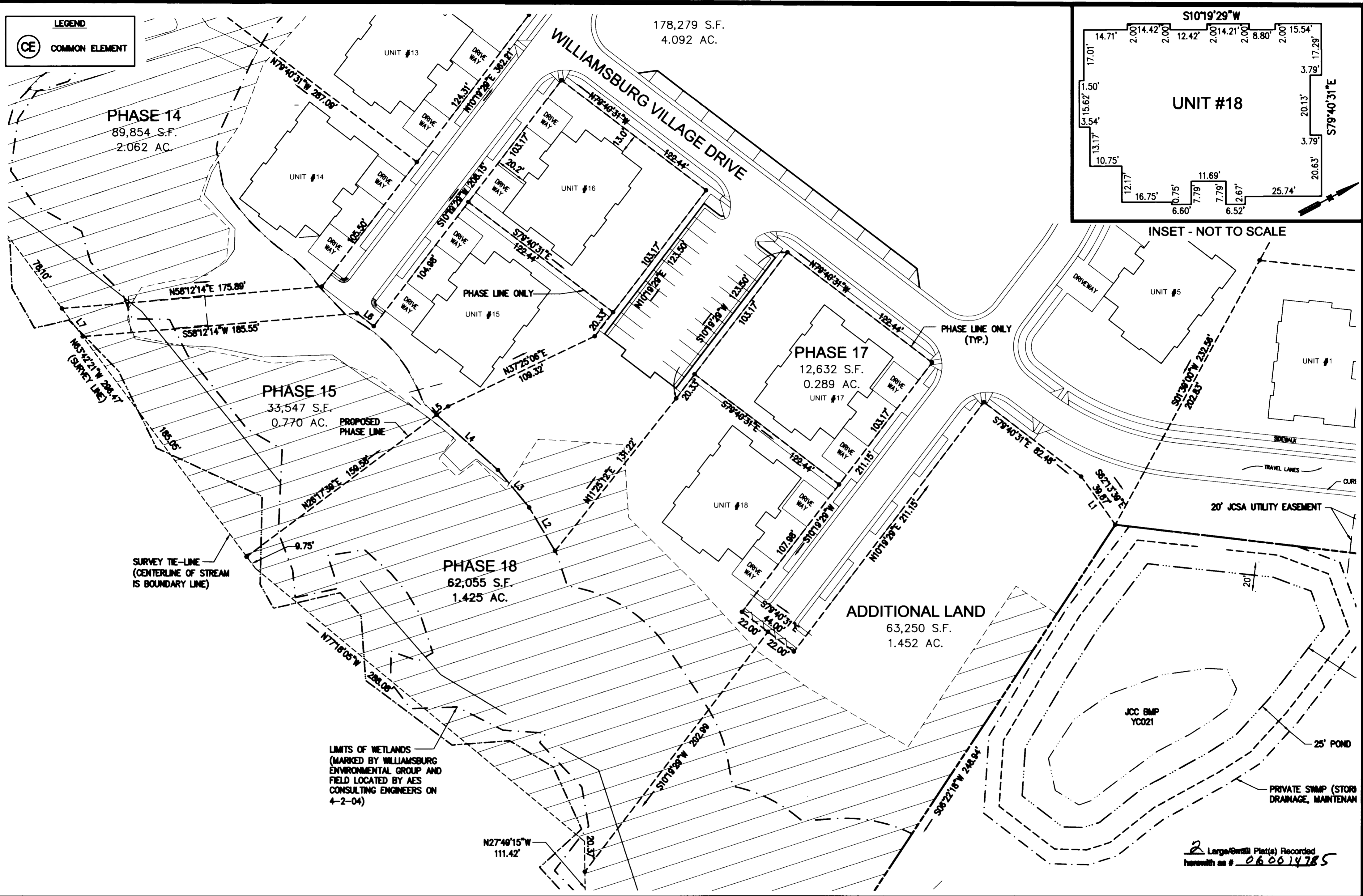
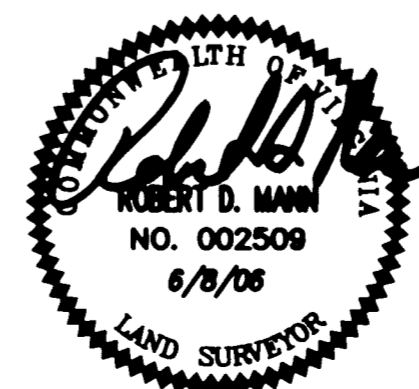


#060014785



5248 Olde Towne Road, Suite 1
Williamsburg, Virginia 23188
(757) 253-0040
Fax (757) 220-8994

"EXHIBIT 1"
PLAT OF CONDOMINIUM
WILLIAMSBURG VILLAGE AT NORGE CONDOMINIUM
PHASE 18, UNIT #18
STONEHOUSE DISTRICT COUNTY OF JAMES CITY VIRGINIA



No.	DATE	REVISION / COMMENT / NOTE	BY

City of Williamsburg & County of James City
Circuit Court: This PLAT was recorded on
at 10:36 AM PM, PB - PG -
DOCUMENT # 060014785
BETSY B. WOOLRIDGE, CLERK
Betsy B. Woolridge Clerk

Designed VMB/JAG	Drawn AWT/eaw
Scale 1"=40'	Date 6/8/08
Project No. 9286-2	
Drawing No. 2 of 2	

2 Large/Small Plat(s) Recorded
herewith as # 060014785