

#060014785

SURVEYOR'S CERTIFICATE

I, ROBERT D. MANN, A DULY REGISTERED LAND SURVEYOR, DO HEREBY CERTIFY THAT, TO THE BEST OF MY KNOWLEDGE AND BELIEF, THIS PLAT FOR PHASE 18, UNIT #18, WILLIAMSBURG VILLAGE AT NORGE CONDOMINIUM IS ACCURATE AND COMPLIES WITH THE PROVISIONS OF VIRGINIA CODE ANN., SUBSECTION 65-79.58 (A), AS AMENDED.

Robert D. Mann
 ROBERT D. MANN, L.S. #2509 DATE 6/8/06

CE - COMMON ELEMENTS

COMMON ELEMENTS INCLUDE ALL PORTIONS OF THE CONDOMINIUM OTHER THAN THE UNITS DEFINED IN THE CONDOMINIUM INSTRUMENTS (AS DEFINED IN THE DECLARATION OF CONDOMINIUM).

EXAMPLES OF COMMON ELEMENTS ARE: PARKING, PAVED AREAS, THE GROUNDS (WHETHER OR NOT LANDSCAPED), ENTRANCE MONUMENTS, DRAINAGE PONDS, ALL PORTIONS OF THE BUILDINGS NOT A PART OF THE UNIT NOR DEFINED AS LIMITED COMMON ELEMENTS, AND ALL CONDUITS, INSTALLATIONS, WIRES, PIPES, EQUIPMENT, ETC. WHICH SERVE OTHER COMMON ELEMENTS OR WHICH SERVE MORE THAN ONE UNIT.

THE UNIT OWNERS ASSOCIATION IS RESPONSIBLE FOR MAINTENANCE OF COMMON LANDS TO THE EXTENT THE SAME ARE LOCATED WITHIN THE COMMON ELEMENTS OF THE CONDOMINIUM AND NOT WITHSTANDING THE FACT THAT A PORTION OF THOSE COMMON LANDS MAY BE SUBJECT TO A NATURAL OPEN SPACE EASEMENT DEDICATED TO JAMES CITY COUNTY.

LCE- LIMITED COMMON ELEMENTS

LIMITED COMMON ELEMENTS ARE AS DEFINED IN THE CONDOMINIUM INSTRUMENTS. EXCEPT AS MAY BE OTHERWISE EXPRESSLY PROVIDED, LIMITED COMMON ELEMENTS INCLUDE VERANDAHs AND ANY OTHER APPARATUS DESIGNED TO SERVE A SINGLE UNIT, BUT LOCATED OUTSIDE THE BOUNDARIES THEREOF, (SUCH AS A FENCE AROUND A PATIO, PORCH OR DECK).

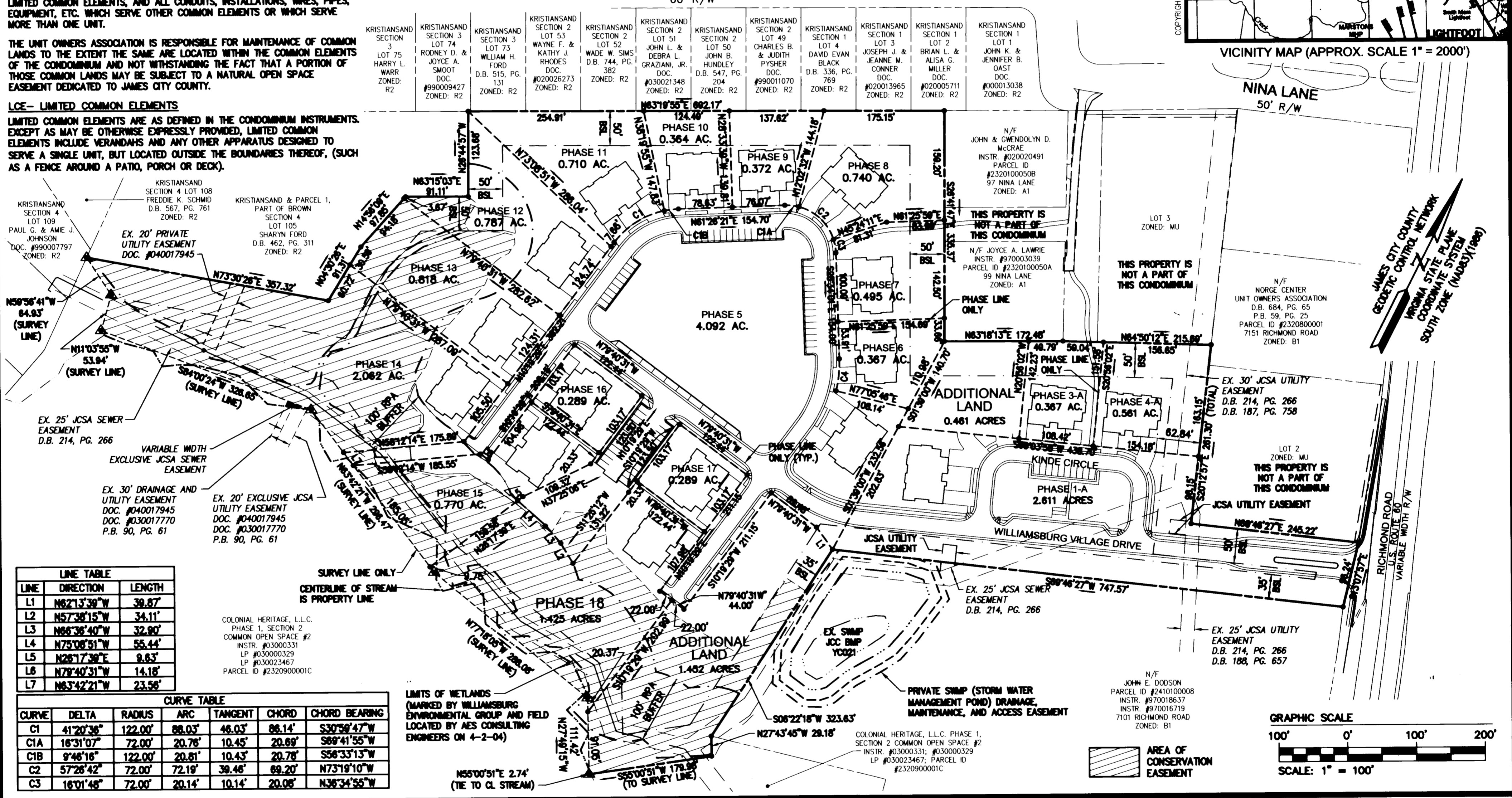
AREA TABULATION

| | |
|-----------------|-------------|
| PHASE 1-A | 2.611 AC.± |
| PHASE 3-A | 0.367 AC.± |
| PHASE 4-A | 0.561 AC.± |
| PHASE 5 | 4.082 AC.± |
| PHASE 6 | 0.367 AC.± |
| PHASE 7 | 0.495 AC.± |
| PHASE 8 | 0.740 AC.± |
| PHASE 9 | 0.372 AC.± |
| PHASE 10 | 0.364 AC.± |
| PHASE 11 | 0.710 AC.± |
| PHASE 12 | 0.787 AC.± |
| PHASE 13 | 0.618 AC.± |
| PHASE 14 | 2.082 AC.± |
| PHASE 15 | 0.770 AC.± |
| PHASE 16 | 0.289 AC.± |
| PHASE 17 | 0.289 AC.± |
| PHASE 18 | 1.425 AC.± |
| ADDITIONAL LAND | 1.913 AC.± |
| TOTAL AREA | 18.032 AC.± |

GENERAL NOTES

1. SITE IS ZONED M-U, (MIXED USE) - WITH PROFFERS (PROFFERS RECORDED AS INSTRUMENT #040018082)
2. WETLANDS AND LAND WITHIN THE RESOURCE PROTECTION AREAS SHALL REMAIN IN A NATURAL UNDISTURBED STATE EXCEPT FOR THOSE ACTIVITIES PERMITTED BY SECTION 23-7 (1) OF THE JAMES CITY COUNTY CODE.
3. NATURAL OPEN SPACE EASEMENTS SHALL REMAIN IN A NATURAL UNDISTURBED STATE EXCEPT FOR THOSE ACTIVITIES REFERENCED ON THE DEED OF EASEMENT.
4. THE PROPERTY AS SHOWN IS ALL OF TAX PARCEL (23-2)(1-50). PROPERTY ADDRESS: 7145 RICHMOND ROAD.
5. THIS PROPERTY LIES IN ZONE "X", (AREAS DETERMINED TO BE OUTSIDE THE 500 YEAR FLOOD PLAIN), PER F.L.R.M. 510201-0020 B, DATED FEBRUARY 6, 1991.
6. PROPERTY REF.: INSTRUMENT #040017945.
7. THIS PLAT HAS BEEN PREPARED WITHOUT THE BENEFIT OF A TITLE REPORT AND IS SUBJECT TO EASEMENTS, SERVITUDES AND COVENANTS OF RECORD.
8. THIS PLAT IS BASED ON AVAILABLE DEEDS AND PLATS OF RECORD AND DOES NOT REPRESENT AN ACTUAL FIELD SURVEY.

RONDANE PLACE
60' R/W



LINE TABLE

| LINE | DIRECTION | LENGTH |
|------|-------------|--------|
| L1 | N62°13'39"W | 39.87' |
| L2 | N57°38'15"W | 34.11' |
| L3 | N66°36'40"W | 32.90' |
| L4 | N75°08'51"W | 55.44' |
| L5 | N28°17'39"E | 9.63' |
| L6 | N79°40'31"W | 14.18' |
| L7 | N63°42'21"W | 23.56' |

CURVE TABLE

| CURVE | DELTA | RADIUS | ARC | TANGENT | CHORD | CHORD BEARING |
|-------|-----------|---------|--------|---------|--------|---------------|
| C1 | 41°20'36" | 122.00' | 88.03' | 46.03' | 88.14' | S30°39'47"W |
| C1A | 16°31'07" | 72.00' | 20.76' | 10.45' | 20.69' | S89°41'55"W |
| C1B | 9°46'16" | 122.00' | 20.81' | 10.43' | 20.78' | S56°33'13"W |
| C2 | 57°26'42" | 72.00' | 72.19' | 39.46' | 69.20' | N73°19'10"W |
| C3 | 16°01'46" | 72.00' | 20.14' | 10.14' | 20.06' | N36°34'55"W |

CONSULTING ENGINEERS
 WILLIAMSBURG • RICHMOND • GLOUCESTER

5248 Olde Towne Road, Suite 1
 Williamsburg, Virginia 23188
 (757) 253-0040
 Fax (757) 220-8994

"EXHIBIT M-1"
PLAT OF CONDOMINIUM
WILLIAMSBURG VILLAGE AT NORGE CONDOMINIUM
 PHASE 18, UNIT #18
 2 Large/Small Plat(s) Recorded
 herewith as # 060014785
 STONEHOUSE DISTRICT COUNTY OF JAMES CITY VIRGINIA



| | | | |
|-----|------|---------------------------|----|
| No. | DATE | REVISION / COMMENT / NOTE | BY |
| | | | |
| | | | |
| | | | |
| | | | |

| | |
|-------------|--------|
| Designed | Drawn |
| WMB/JAG | ROD |
| Scale | Date |
| 1"=100' | 6/8/06 |
| Project No. | 9286-2 |
| Drawing No. | 1 of 2 |