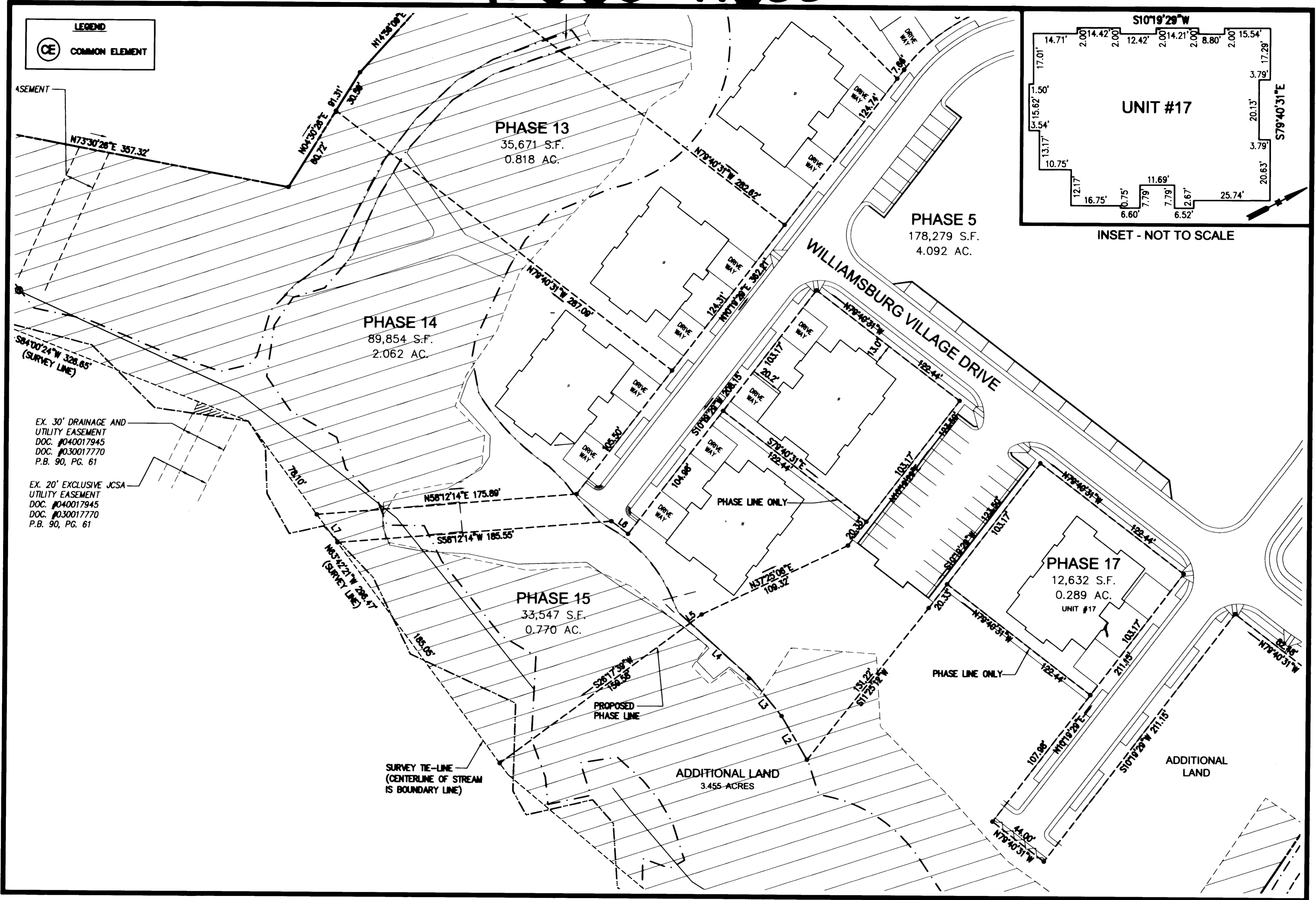
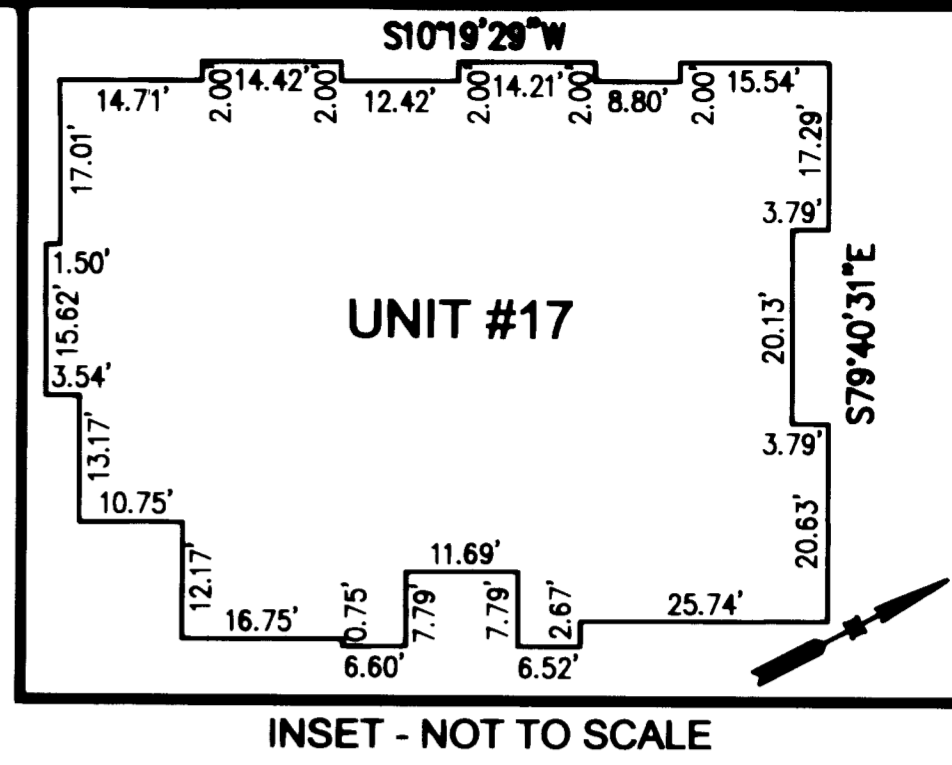


#060011855



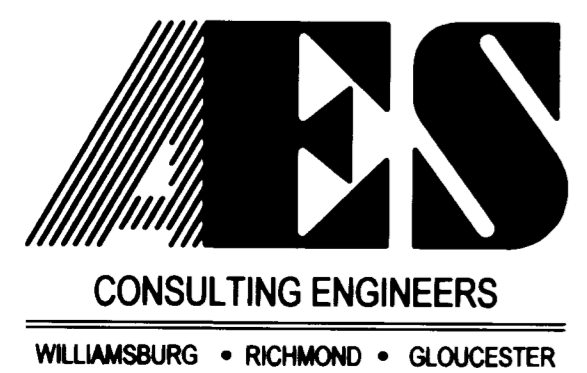
EX. 30' DRAINAGE AND UTILITY EASEMENT
 DOC. #040017945
 DOC. #030017770
 P.B. 90, PG. 61

EX. 20' EXCLUSIVE JCSA UTILITY EASEMENT
 DOC. #040017945
 DOC. #030017770
 P.B. 90, PG. 61



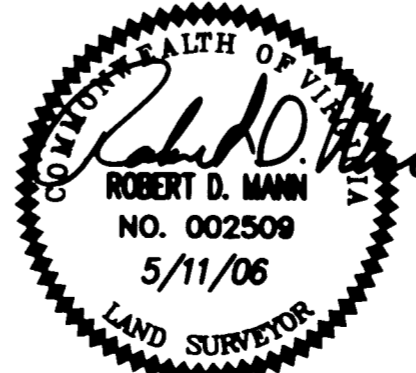
INSET - NOT TO SCALE

"EXHIBIT 1"



5248 Olde Towne Road, Suite 1
 Williamsburg, Virginia 23188
 (757) 253-0040
 Fax (757) 220-8994

PLAT OF CONDOMINIUM
WILLIAMSBURG VILLAGE AT NORGE CONDOMINIUM
 PHASE 17, UNIT #17
 STONEHOUSE DISTRICT COUNTY OF JAMES CITY VIRGINIA



No.	DATE	REVISION / COMMENT / NOTE	BY

City of Williamsburg & County of James City
 Circuit Court: This PLAT was recorded on
 at 11:07 AM on May 22, 2006
 DOCUMENT # 060011855
 Betsy B. Woolridge, CLERK
Betsy B. Woolridge Clerk

Designed VMB/JAG	Drawn AWT/ew
Scale 1"=40'	Date 5/11/06
Project No. 9286-2	
Drawing No. 2 of 2	