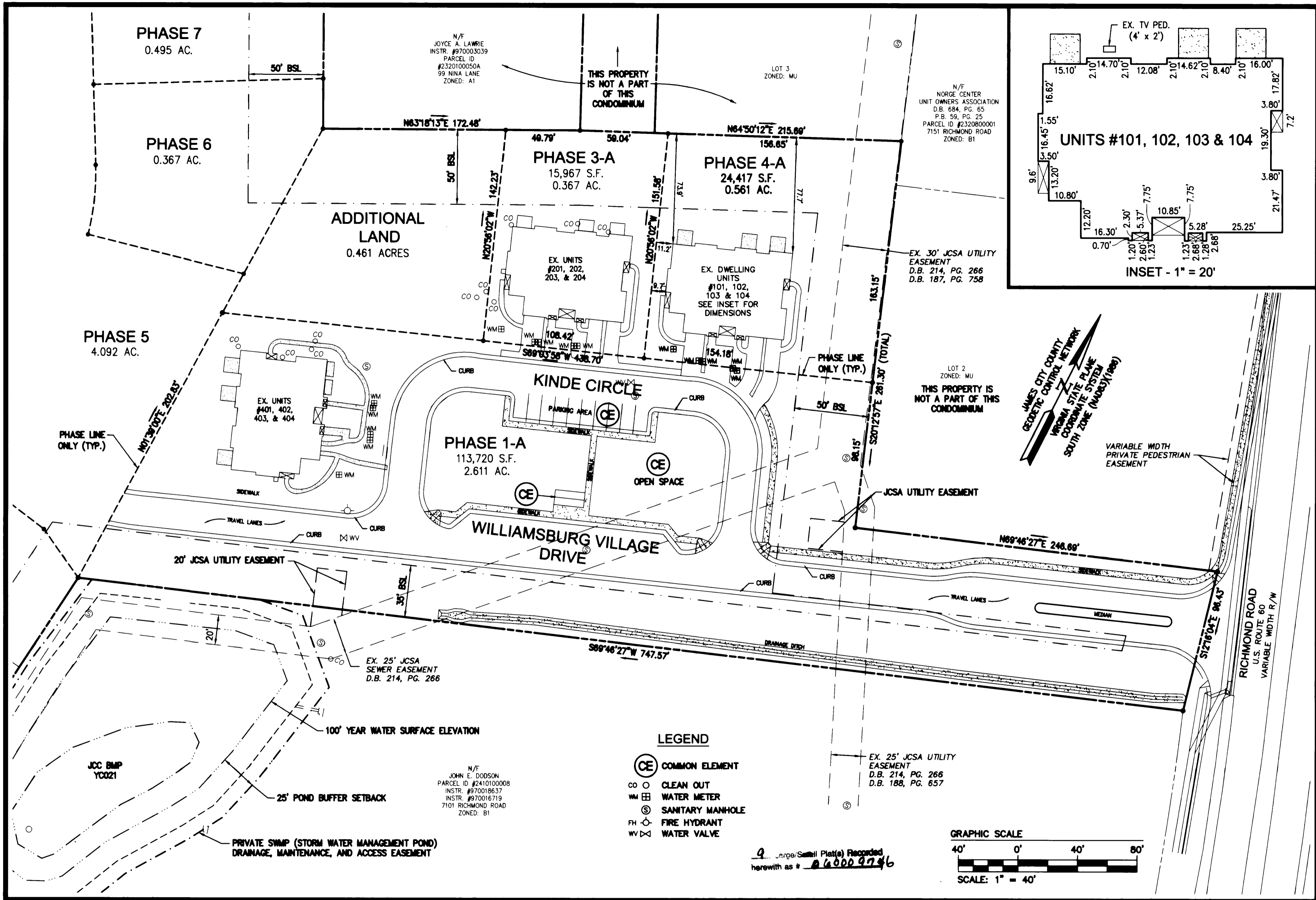


S:\Jobs\19286102-Norge Condo Plats\dwg\Plats\Record\Phase 4\Final Condo Plat PH 4-A\1928602Condo Phase 4-A Sh 02.dwg, 4/25/2006 3:40:31 PM, EAW

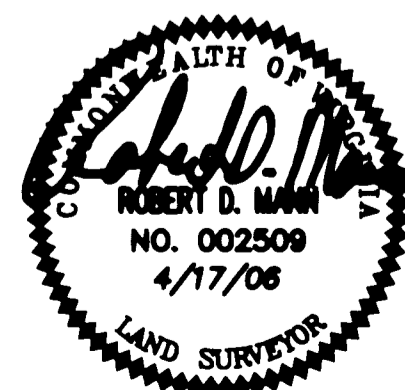


#060009746



5248 Olde Towne Road, Suite 1
Williamsburg, Virginia 23188
(757) 253-0040
Fax (757) 220-8994

"EXHIBIT 1"
PLAT OF CONDOMINIUM
WILLIAMSBURG VILLAGE AT NORGE CONDOMINIUM
PHASE 4-A
UNITS #101, 102, 103, AND 104
STONEHOUSE DISTRICT COUNTY OF JAMES CITY VIRGINIA



City of Williamsburg & County of James City Circuit Court. This PLAT was recorded on <u>27 April 2006</u> at <u>11:36</u> AM/PM, PB <u>—</u> PG <u>—</u> DOCUMENT # <u>060009746</u> BETSY B. WOOLRIDGE, CLERK			
<u>Betsy B. Woolridge</u> Clerk			
No.	DATE	REVISION / COMMENT / NOTE	BY

Designed VMB/JAG	Drawn AWT
Scale 1"=40'	Date 4/17/06
Project No. 9286-2	
Drawing No. 2 of 9	