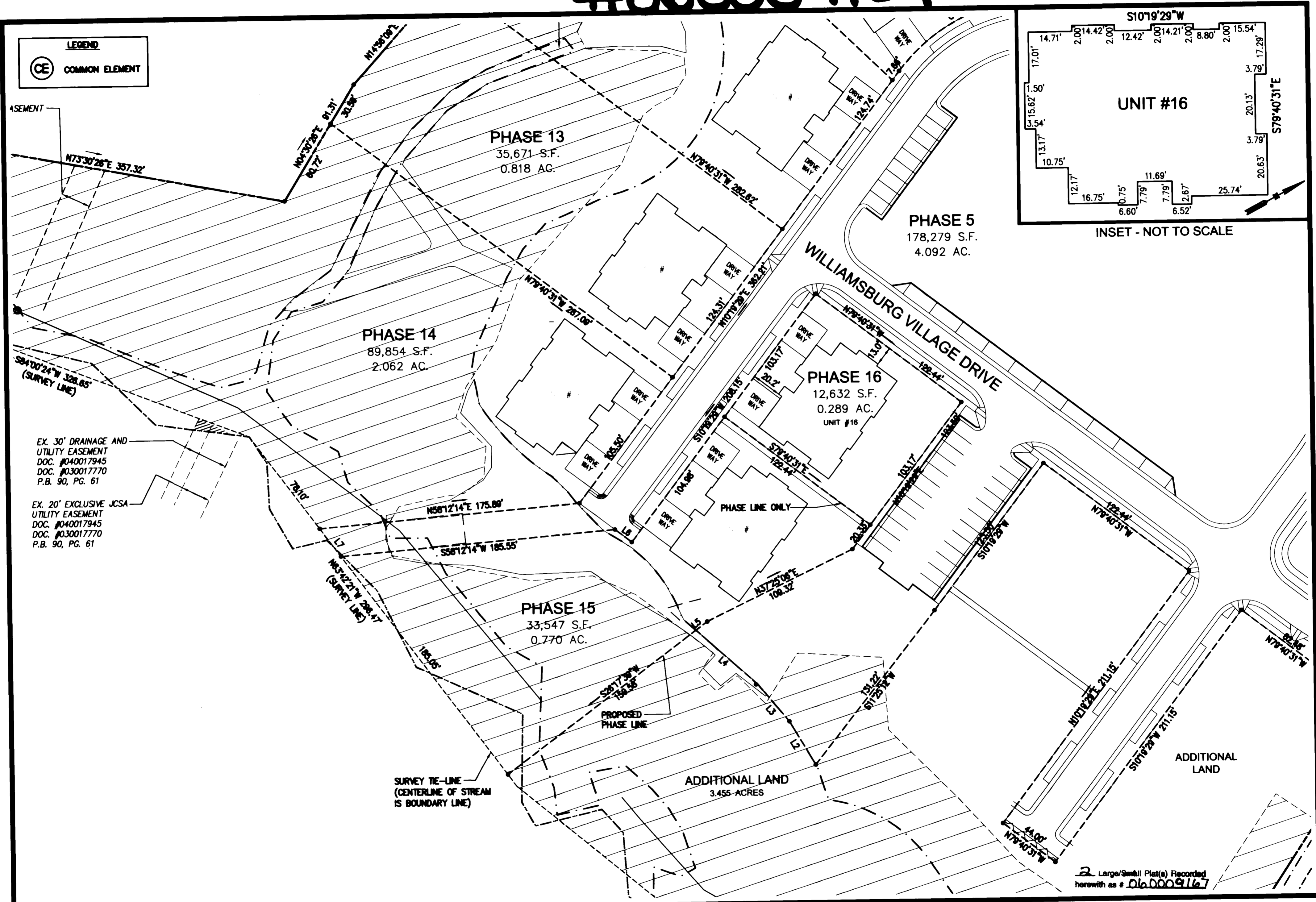


#060009167



S:\Jobs\928602-Norge Condo Plats\dwg\Plats\Record\Phase 16\Final Land Plat PH 161928602Condo Sh 002 PHASE16.dwg, 4/17/2006 3:01:04 PM, EAW

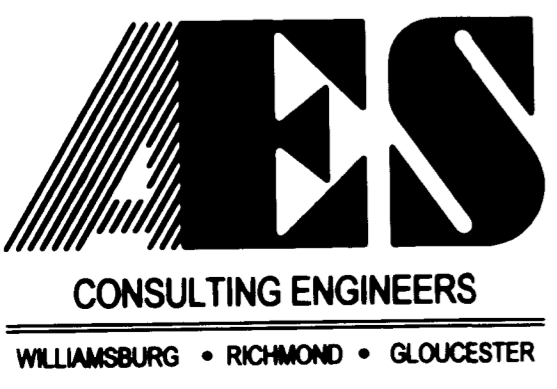
"EXHIBIT 1"

PLAT OF CONDOMINIUM
WILLIAMSBURG VILLAGE AT NORGE CONDOMINIUM
 PHASE 16, UNIT #16
 STONEHOUSE DISTRICT COUNTY OF JAMES CITY VIRGINIA



| | | | |
|---|------|---------------------------|----|
| City of Williamsburg & County of James City | | | |
| Circuit Court: This PLAT was recorded on | | | |
| at 11:54 AM, PB PG | | | |
| DOCUMENT # 060009167 | | | |
| BETSY B. WOOLRIDGE, CLERK | | | |
| <i>Betsy Woolridge</i> Clerk | | | |
| No. | DATE | REVISION / COMMENT / NOTE | BY |
| | | | |

| | |
|------------------------------|-------------------------|
| Designed VMB/JAG | Drawn AWT/ecw |
| Scale 1"=40' | Date 4/11/06 |
| Project No. 9286-2 | |
| Drawing No. 2 of 2 | |



5248 Olde Towne Road, Suite 1
 Williamsburg, Virginia 23188
 (757) 253-0040
 Fax (757) 220-8994