

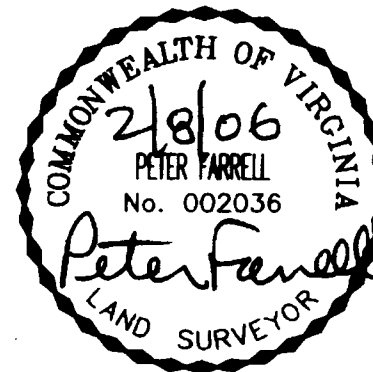
# #060009090

City of Williamsburg & County of James City  
 Circuit Court: This PLAT was recorded on  
 at 3:43 AM/PM, PG. 21  
 DOCUMENT # 060009090  
 BETSY B. WOOLRIDGE, CLERK  
*Betsy Woolridge* Clerk

## EASEMENT PLAT SHOWING CONSERVATION EASEMENT FOR NATURAL OPEN SPACE

ON THE PROPERTY OF  
**PRESBYTERIAN LEAGUE OF THE  
 PRESBYTERY OF EASTERN VIRGINIA, INC.**  
 STONEHOUSE DISTRICT, JAMES CITY COUNTY, VIRGINIA  
 DATE: FEBRUARY 8, 2006 SCALE: AS SHOWN

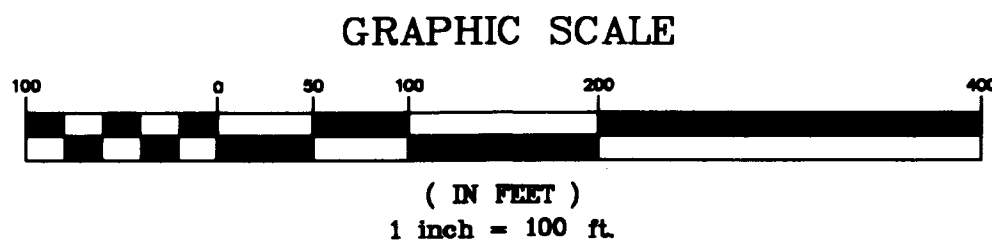
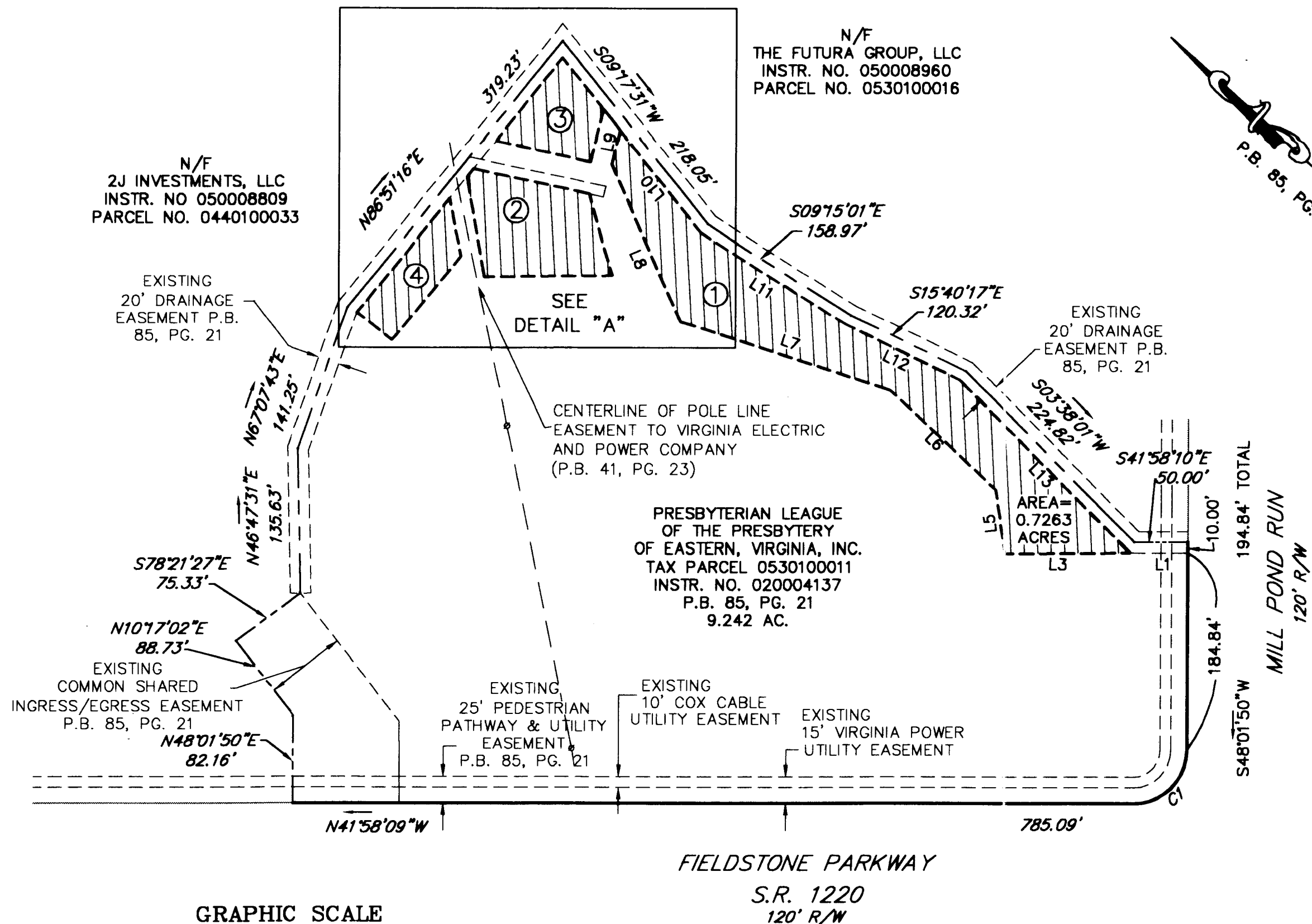
SHEET 1 OF 1



**LANDMARK**  
 DESIGN GROUP  
 Engineers • Planners • Surveyors  
 Landscape Architects • Environmental Consultants

4029 Ironbound Road  
 Suite 100  
 Williamsburg, VA 23186  
 Tel. (757) 253-2975  
 Fax (757) 229-0049  
 Email: lmdg@landmarkdg.com

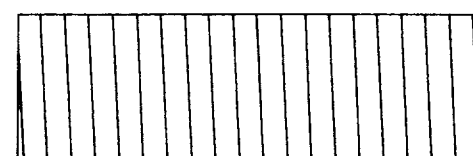
5544 Greenwich Road  
 Suite 200  
 Virginia Beach, VA 23462  
 Tel. (757) 473-2000  
 Fax (757) 497-7933  
 Email: lmdg@landmarkdg.com



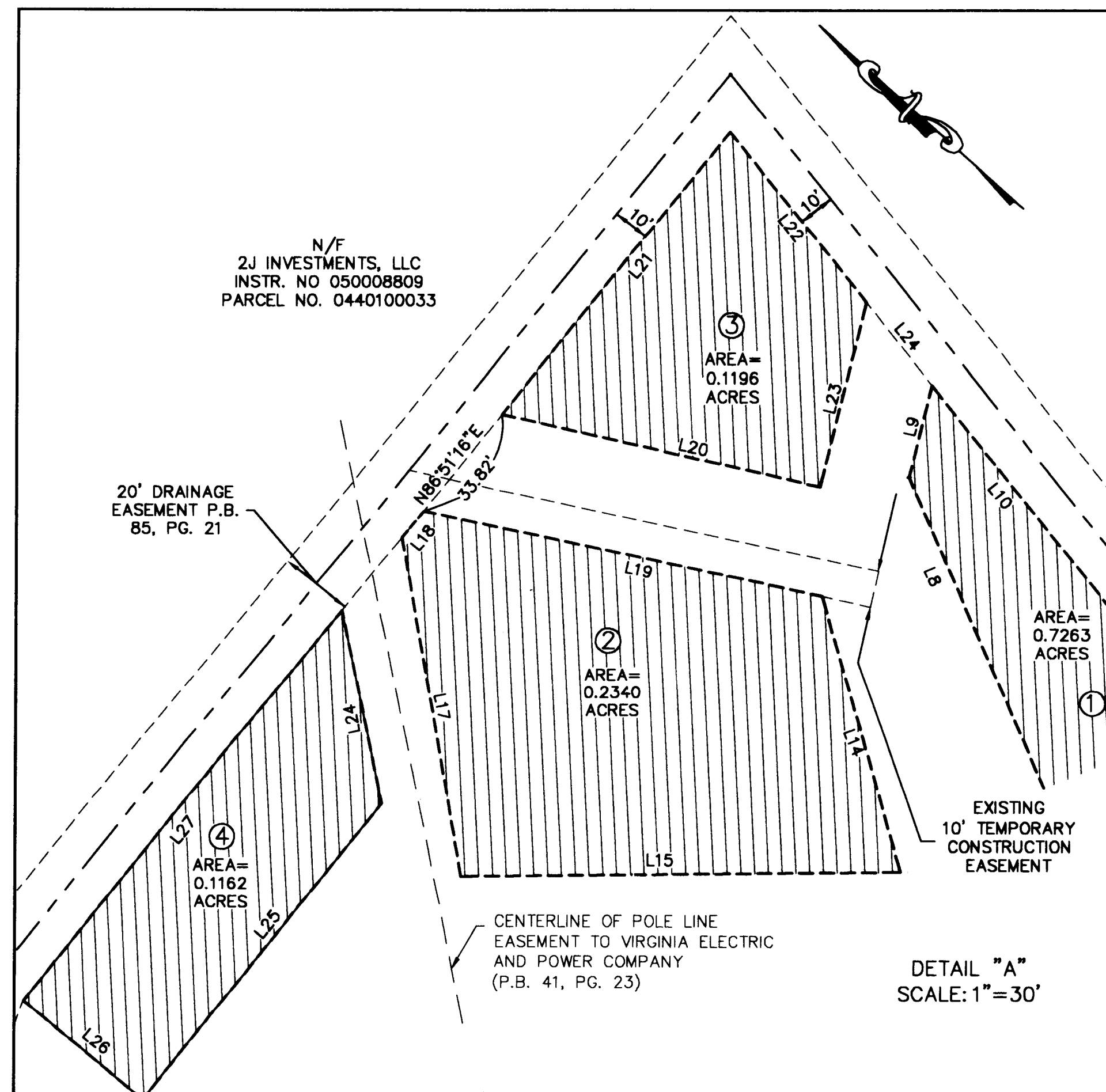
LINE	LENGTH	BEARING
L1	54.03'	S41°58'10"E
L2	157.00'	S46°05'40"W
L3	116.71'	N42°18'12"W
L4	60.86'	N39°54'34"E
L5	136.01'	N01°19'23"E
L6	206.45'	N23°27'44"W
L7	161.32'	N24°23'06"E
L8	31.86'	N62°12'30"E
L9	120.66'	S09°17'31"W
L10	161.16'	S09°15'01"E
L11	119.18'	S15°40'17"E
L12	227.44'	S03°36'07"W
L13	78.75'	N32°03'52"E
L14	119.49'	S42°38'31"E
L15	94.63'	N38°02'09"E
L16	9.35'	N86°51'16"E
L17	110.87'	S29°48'12"E
L18	90.12'	N29°15'03"W
L19	98.39'	N86°51'16"E
L20	59.56'	S09°17'31"W
L21	50.04'	S62°12'30"W
L22	25.07'	N09°17'31"W
L23	102.75'	S86°57'12"W
L24	42.03'	N03°02'48"W
L25	137.55'	N86°51'16"E

CURVE	LENGTH	RADIUS	TANGENT	CHORD	CHORD BEARING
C1	39.27'	25.00'	25.00'	35.36'	N86°58'10"W

REFERENCE:  
 P.B. 85, PG. 21



TOTAL AREA  
 IN CONSERVATION  
 EASEMENT=1.1961 ACRES



DRAWN BY: AST

PROJ. NO.: 2005026-000.01