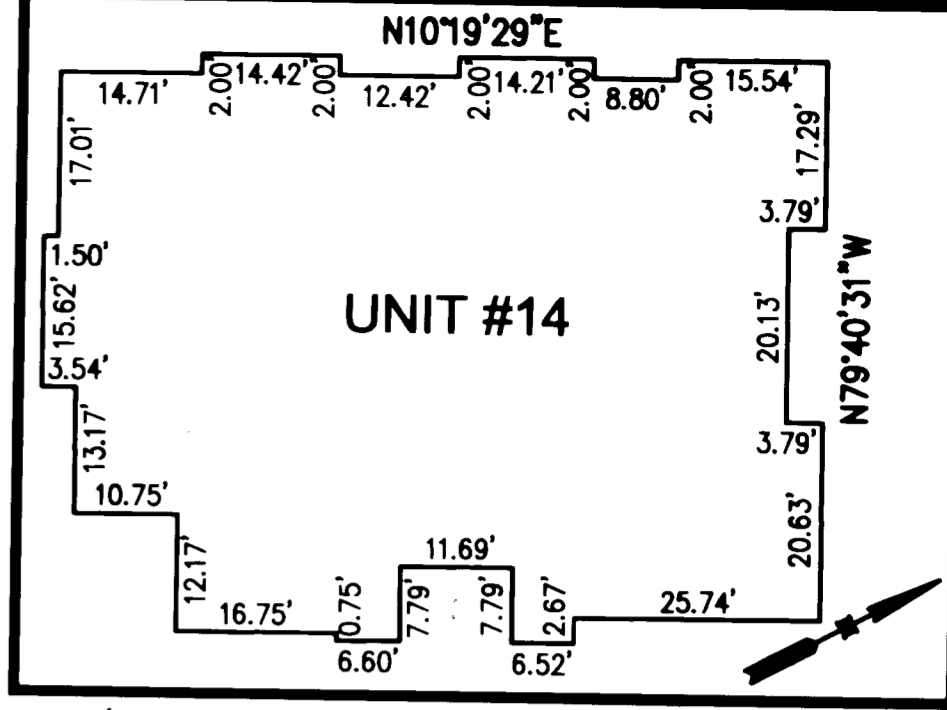


S:\Jobs\9286\02-Norge Condo Plats\dwg\Plats\Record\Phase 14\928602Condo Sh 002 PHASE14.dwg, 1/10/2006 11:25:01 AM, EAW

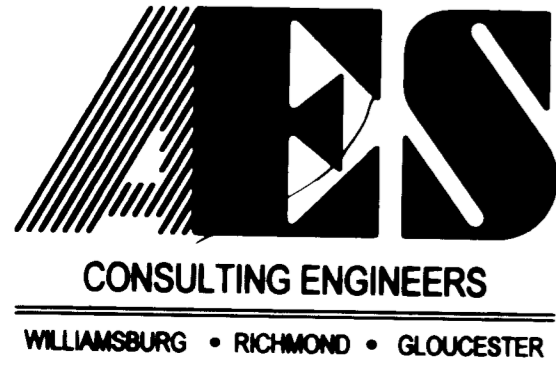
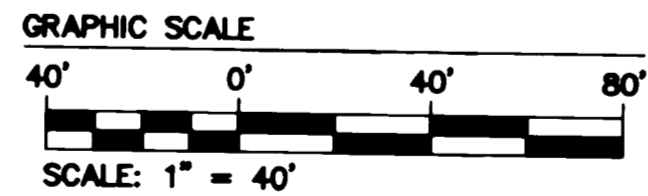
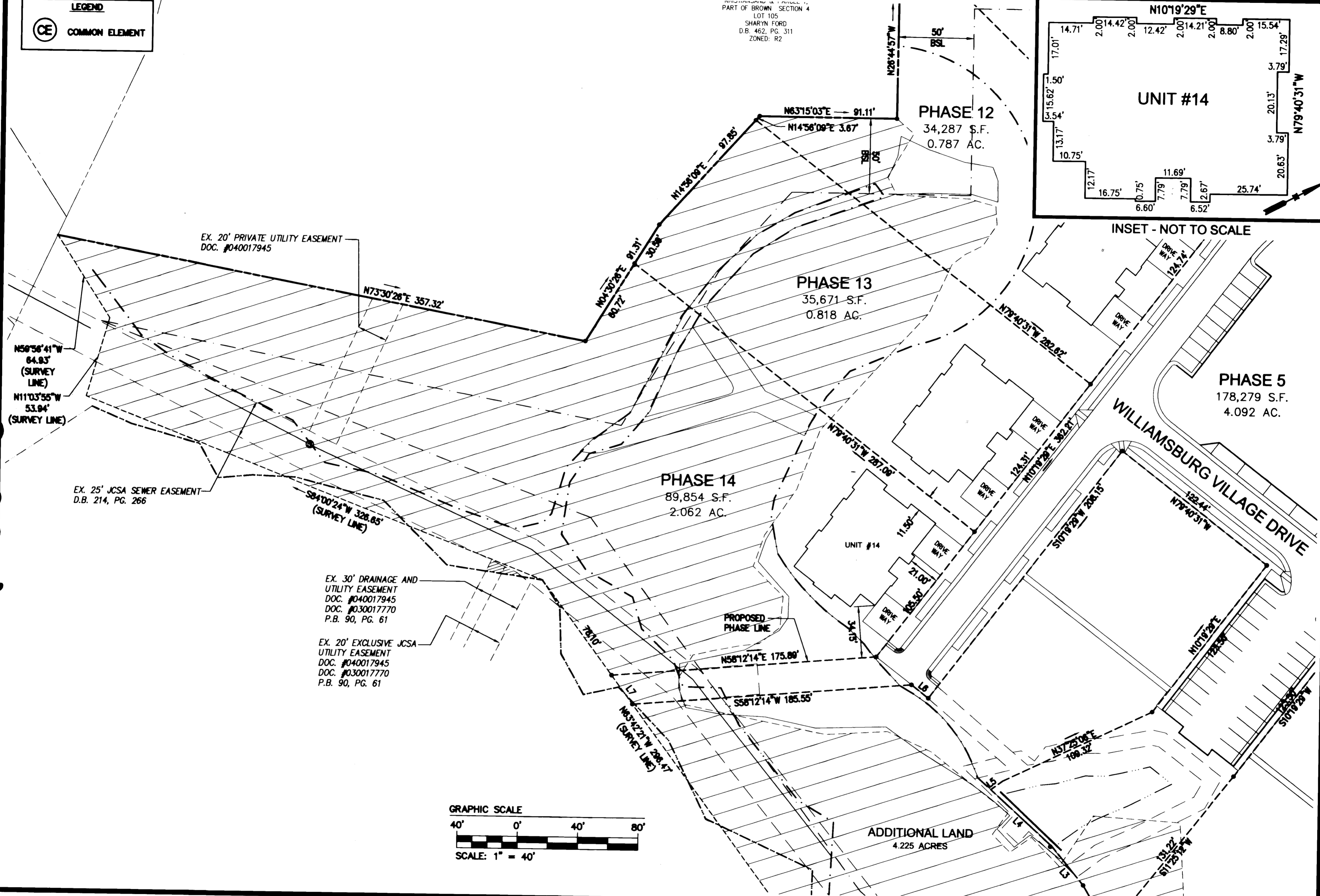
#0600365

LEGEND
CE COMMON ELEMENT

PART OF BROWN SECTION 4
LOT 105
SHARYN FORD
D.B. 462, PG. 311
ZONED: R2

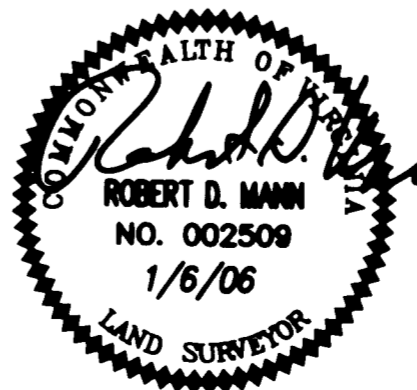


INSET - NOT TO SCALE



5248 Olde Towne Road, Suite 1
Williamsburg, Virginia 23188
(757) 253-0040
Fax (757) 220-8994

"EXHIBIT 1"
PLAT OF CONDOMINIUM
WILLIAMSBURG VILLAGE AT NORGE CONDOMINIUM
PHASE 14, UNIT #14
STONEHOUSE DISTRICT COUNTY OF JAMES CITY VIRGINIA



No.	DATE	REVISION / COMMENT / NOTE	BY

City of Williamsburg & County of James City
Circuit Court: This PLAT was recorded on
21 February 2006
at 11:58 AM/PM; PB PG
DOCUMENT # 00073665
BETSY B. WOOLRIDGE, CLERK
Betsy B. Woolridge Clerk

Designed VMB/JAG	Drawn AWT/eaw
Scale 1"=40'	Date 1/6/06
Project No. 9286-2	
Drawing No. 2 of 2	