

#060003572

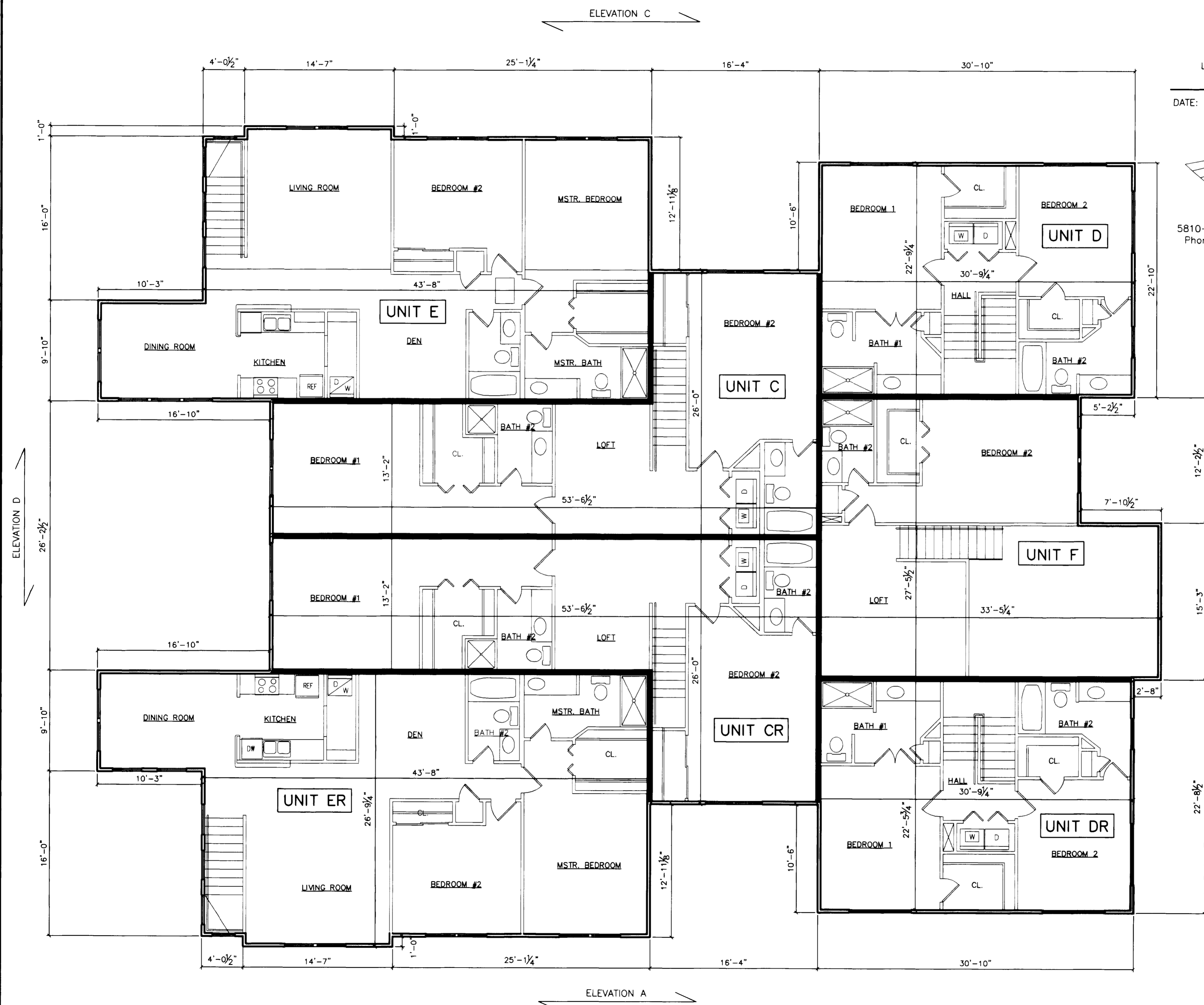
AMENDED PLAT OF  
PHASE 1  
**BRAEMAR CREEK**  
AT GREENSPRINGS PLANTATION  
A CONDOMINIUM  
LOCATED IN THE BERKELEY DISTRICT  
JAMES CITY COUNTY, VIRGINIA

DATE: 2/01/06 SCALE: N/A JOB# 05-548

SHEET 3 OF 5

**LandTech**  
**Resources, Inc.**  
Surveying • Engineering • GPS

5810-F Mooretown Road, Williamsburg, VA 23188  
Phone: (757) 565-1677 Fax: (757) 565-0782  
web: landtechresources.com



City of Williamsburg & County of James City  
Circuit Court. This Plat was recorded on  
17 February 2006  
at 4:02 AM/PM, PG 0  
DOCUMENT # 060003572  
BETSY B. WOOLRIDGE, CLERK  
Betsy B. Woolridge Clerk