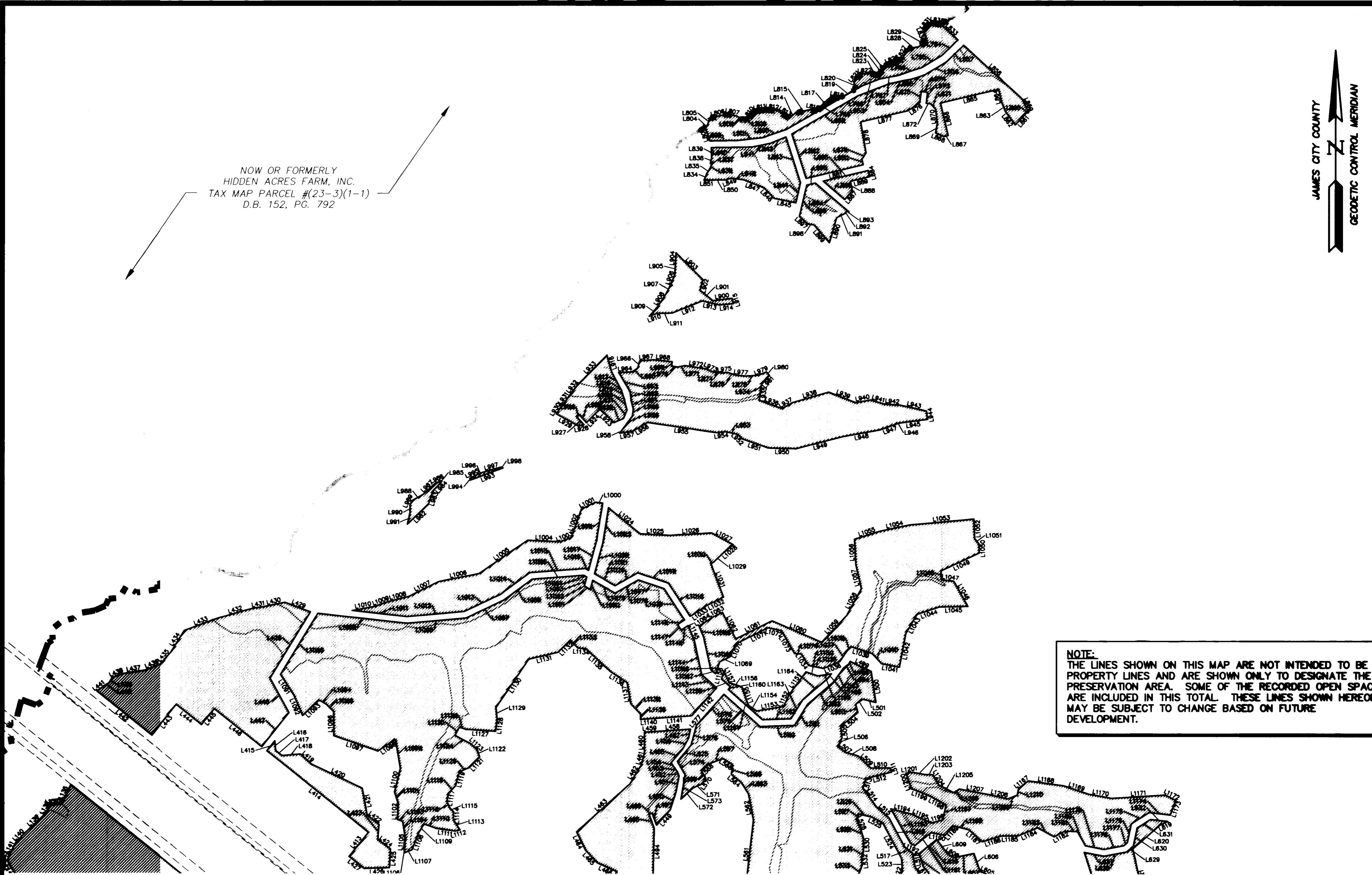
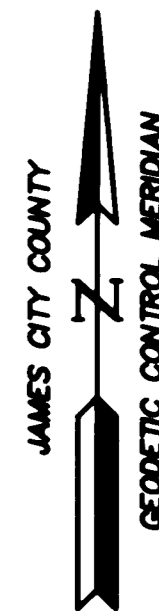
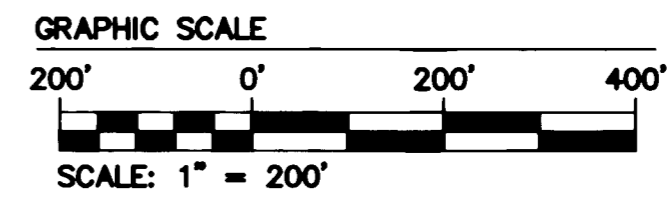


#060001803

NOW OR FORMERLY
HIDDEN ACRES FARM, INC.
TAX MAP PARCEL #(23-3)(1-1)
D.B. 152, PG. 792

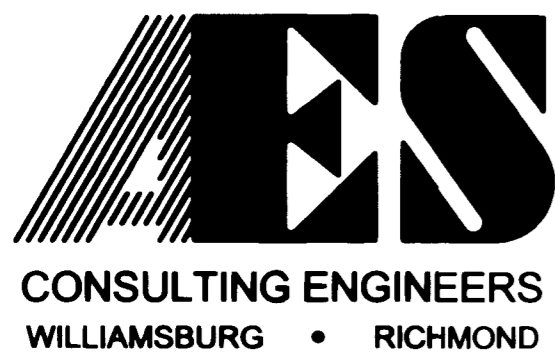


NOTE:
THE LINES SHOWN ON THIS MAP ARE NOT INTENDED TO BE PROPERTY LINES AND ARE SHOWN ONLY TO DESIGNATE THE PRESERVATION AREA. SOME OF THE RECORDED OPEN SPACES ARE INCLUDED IN THIS TOTAL. THESE LINES SHOWN HEREON MAY BE SUBJECT TO CHANGE BASED ON FUTURE DEVELOPMENT.



10 Large/Small Plat(s) Recorded
herewith as # 060001803

S:\jobs\888111L-Preservation Map and Exhibit-DEC\dwg\Cad\MAP SHOWING PRESERVATION AREAS.dwg, 1/25/2006 9:46:30 AM, heb



5248 Olde Towne Road, Suite 1
Williamsburg, Virginia 23188
(757) 253-0040
Fax (757) 220-8994

MAP SHOWING PRESERVATION AREAS

LOCATED ON THE PROPERTY OWNED BY
COLONIAL HERITAGE

STONEHOUSE DISTRICT COUNTY OF JAMES CITY VIRGINIA

City of Williamsburg & County of James City Circuit Court: This PLAT was recorded on <u>1-25-2006</u> at <u>3:04</u> AM/PM, PB. PG. _____ DOCUMENT # <u>060001803</u> BETSY B. WOOLRIDGE, CLERK <i>Betsy B. Woolridge</i> Clerk			
No.	DATE	REVISION / COMMENT / NOTE	REVIEWED BY

Designed AES	Drawn AES
Scale 1"=200'	Date 03/16/2005
Project No. 8881-11L	
Drawing No. 5 of 10	