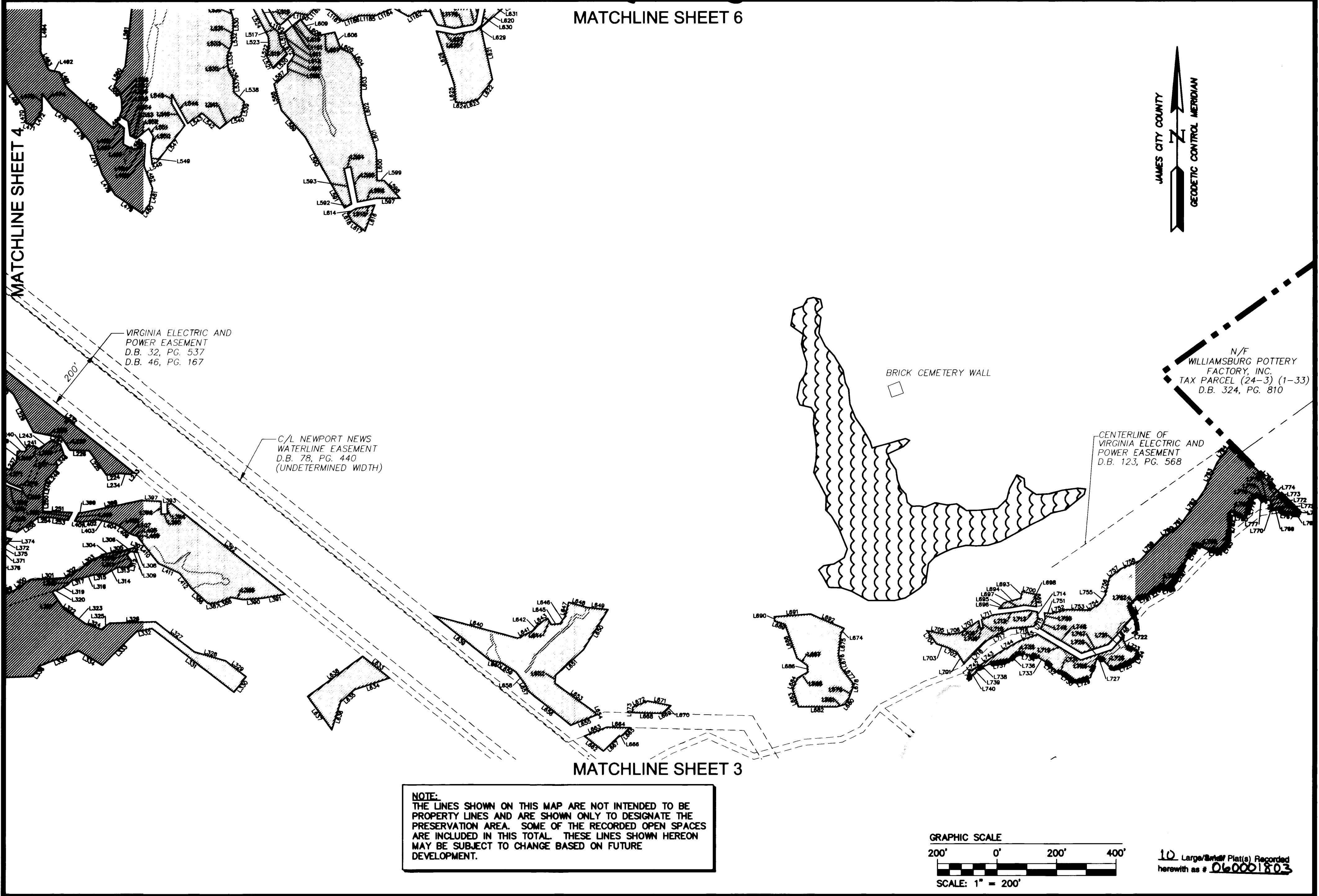
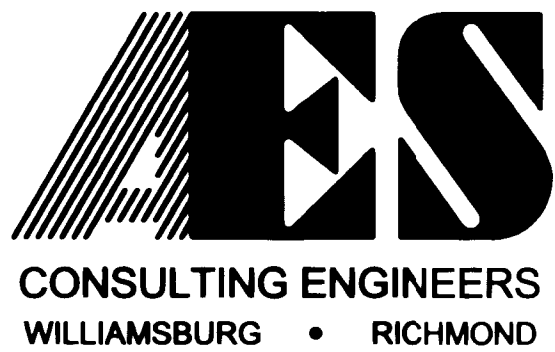


# #060001803

MATCHLINE SHEET 6



S:\Jobs\888111L-Preservation Map and Exhibit-DEC\dwg\CadMAP SHOWING PRESERVATION AREAS.dwg, 1/25/2006 9:46:06 AM, heb



5248 Olde Towne Road, Suite 1  
 Williamsburg, Virginia 23188  
 (757) 253-0040  
 Fax (757) 220-8994

### MAP SHOWING PRESERVATION AREAS

LOCATED ON THE PROPERTY OWNED BY  
**COLONIAL HERITAGE**

STONEHOUSE DISTRICT      COUNTY OF JAMES CITY      VIRGINIA

City of Williamsburg & County of James City		Circuit Court: This PLAT was recorded on	
		1-25-2006	
		at 3:04 PM, PG. 1	
		DOCUMENT # 060001803	
		BETSY B. WOOLRIDGE, CLERK	
		<i>Betsy B. Woolridge</i> Clerk	
No.	DATE	REVISION / COMMENT / NOTE	REVIEWED BY

Designed AES	Drawn AES
Scale 1"=200'	Date 03/16/2005
Project No. 8881-11L	
Drawing No. 4 of 10	