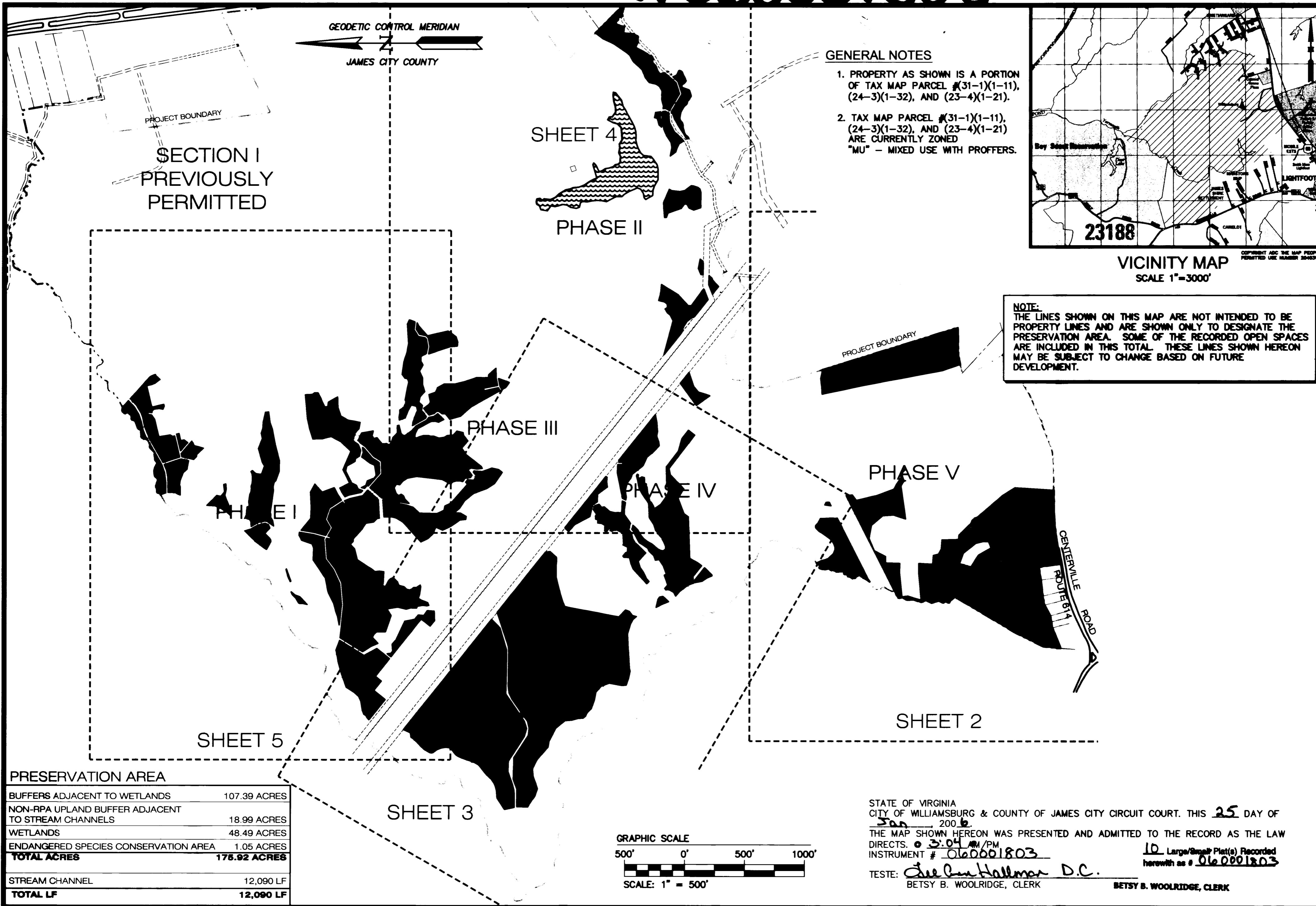


# #060001803



**GENERAL NOTES**

1. PROPERTY AS SHOWN IS A PORTION OF TAX MAP PARCEL #(31-1)(1-11), (24-3)(1-32), AND (23-4)(1-21).
2. TAX MAP PARCEL #(31-1)(1-11), (24-3)(1-32), AND (23-4)(1-21) ARE CURRENTLY ZONED "MU" - MIXED USE WITH PROFFERS.

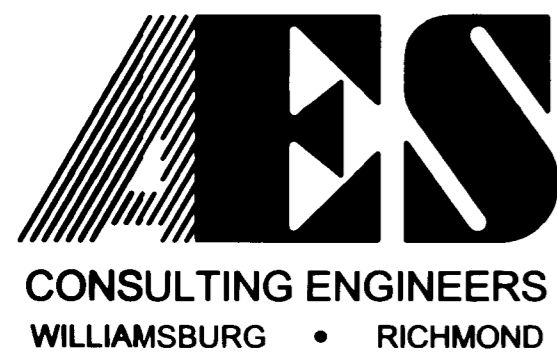
**NOTE:**  
THE LINES SHOWN ON THIS MAP ARE NOT INTENDED TO BE PROPERTY LINES AND ARE SHOWN ONLY TO DESIGNATE THE PRESERVATION AREA. SOME OF THE RECORDED OPEN SPACES ARE INCLUDED IN THIS TOTAL. THESE LINES SHOWN HEREON MAY BE SUBJECT TO CHANGE BASED ON FUTURE DEVELOPMENT.

**PRESERVATION AREA**

BUFFERS ADJACENT TO WETLANDS	107.39 ACRES
NON-RPA UPLAND BUFFER ADJACENT TO STREAM CHANNELS	18.99 ACRES
WETLANDS	48.49 ACRES
ENDANGERED SPECIES CONSERVATION AREA	1.05 ACRES
<b>TOTAL ACRES</b>	<b>175.92 ACRES</b>
STREAM CHANNEL	12,090 LF
<b>TOTAL LF</b>	<b>12,090 LF</b>

STATE OF VIRGINIA  
CITY OF WILLIAMSBURG & COUNTY OF JAMES CITY CIRCUIT COURT. THIS 25 DAY OF Jan, 2006.  
THE MAP SHOWN HEREON WAS PRESENTED AND ADMITTED TO THE RECORD AS THE LAW DIRECTS. 3:04 AM/PM  
INSTRUMENT # 060001803 10 Large/Small Plat(s) Recorded herewith as # 060001803  
TESTE: Chae Ann Hallman D.C.  
BETSY B. WOOLRIDGE, CLERK BETSY B. WOOLRIDGE, CLERK

S:\Jobs\888111L-Preservation Map and Exhibit-DEClodhg\Cad\MAP SHOWING PRESERVATION AREAS.dwg, 1/25/2006 9:31:08 AM, heb



5248 Olde Towne Road, Suite 1  
Williamsburg, Virginia 23188  
(757) 253-0040  
Fax (757) 220-8994

**MAP SHOWING PRESERVATION AREAS**  
LOCATED ON THE PROPERTY OWNED BY  
**COLONIAL HERITAGE**  
STONEHOUSE DISTRICT COUNTY OF JAMES CITY VIRGINIA

No.	DATE	REVISION / COMMENT / NOTE	REVISOR	REVIEWER

Designed AES	Drawn AES
Scale 1"=500'	Date 03/16/2005
Project No. 8881-11L	
Drawing No. 1 of 10	