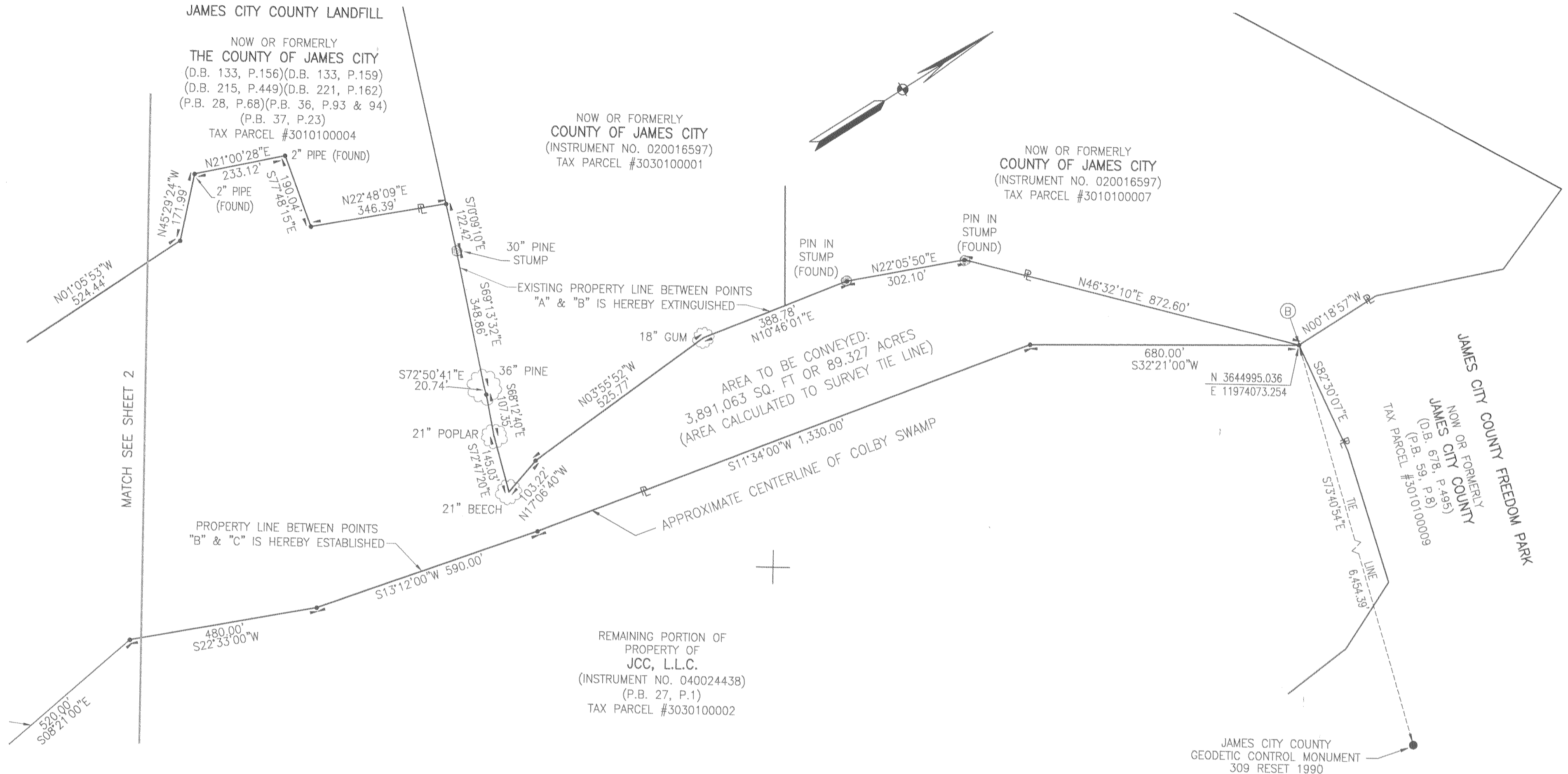


#050030990

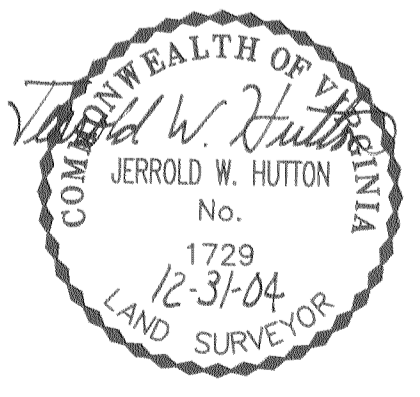


LOT LINE ADJUSTMENT PLAT
 FOR
 CONVEYANCE OF PROPERTY
 FROM
 JCC, L.L.C.
 TO
 JAMES CITY COUNTY
 JAMES CITY COUNTY, VIRGINIA

SCALE: 1"=200'
 DECEMBER 1, 2004
 ROUSE-SIRINE ASSOCIATES, LTD.
 SURVEYORS AND MAPPING CONSULTANTS
 333 OFFICE SQUARE LANE
 VIRGINIA BEACH, VIRGINIA 23462
 TEL: (757)490-2308; FAX: (757)499-9136
 www.rouse-sirine.com

0 100 200 400 600 FEET
 GRAPHIC SCALE

SHEET 3 OF 3



City of Williamsburg & County of James City
 Circuit Court: This PLAT was recorded on
29 December 2004
 at 1:28 AM/PM, PB PG
 DOCUMENT # 050030990
 BETSY B. WOOLRIDGE, CLERK
Betsy B. Woolridge Clerk

3 Large/Small Plat(s) Recorded
 herewith as # 050030990

SEE SHEET 1 FOR NOTES AND CERTIFICATIONS