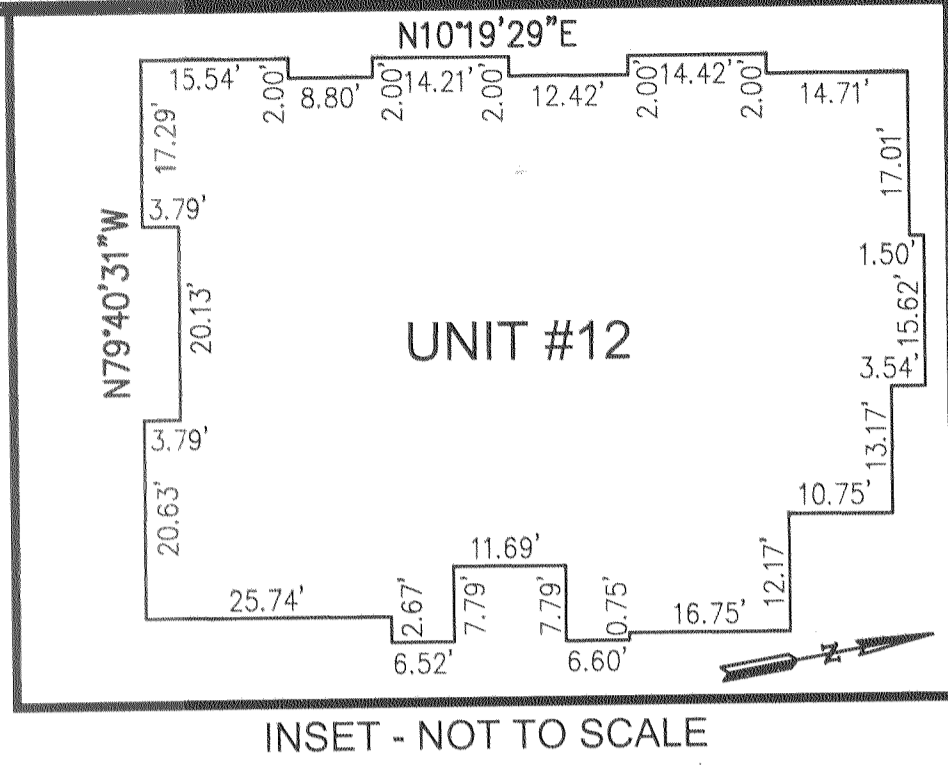
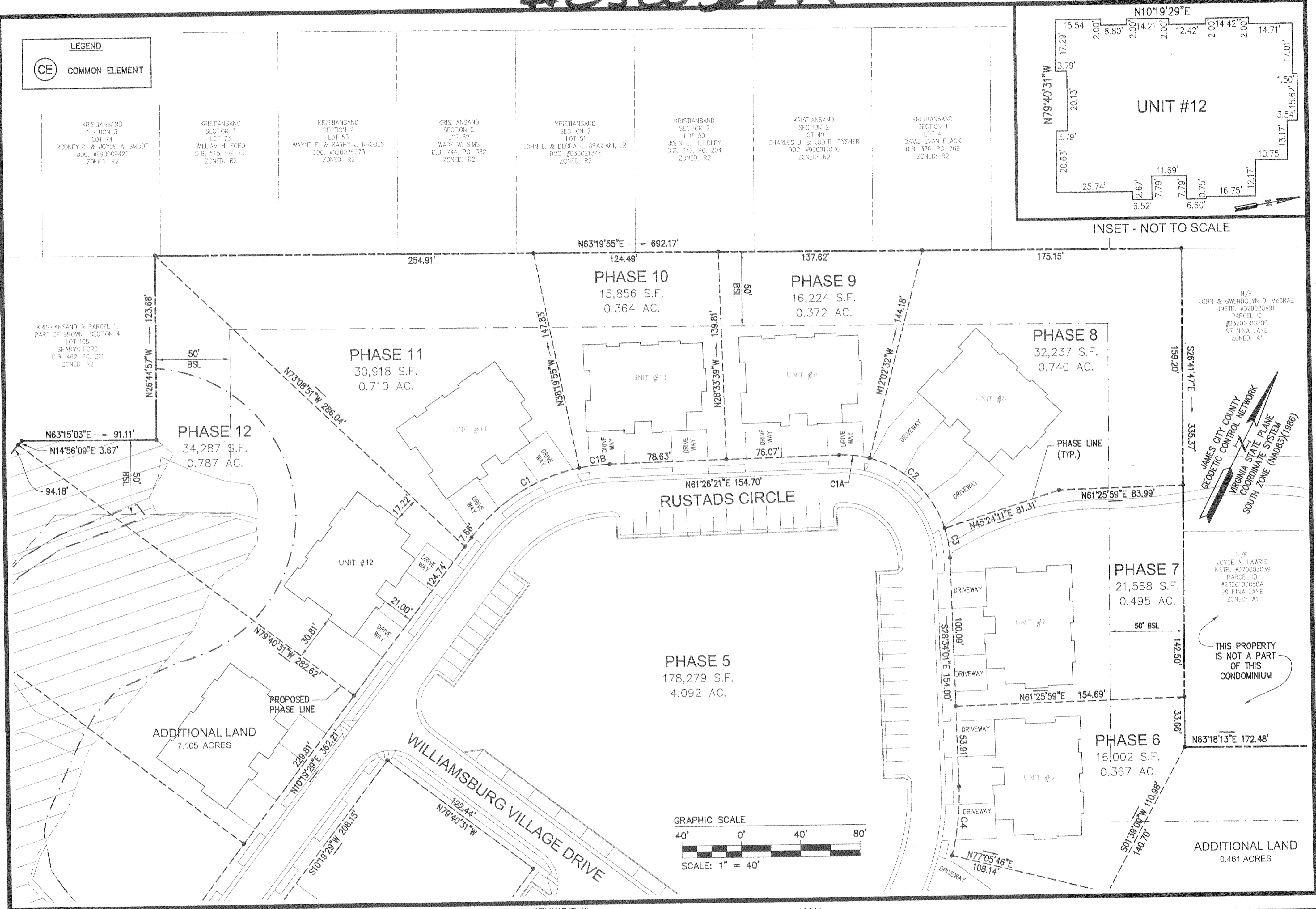


#050030377

LEGEND
CE COMMON ELEMENT



S:\Jobs\92866102-Norge Condo Plats\dwg\Plats\Record\Phase 12\9286602Condo Sh 002 PHASE12.dwg, 12/13/2005 1:05:59 PM

ES CONSULTING ENGINEERS
 WILLIAMSBURG • RICHMOND • GLOUCESTER

5248 Olde Towne Road, Suite 1
 Williamsburg, Virginia 23188
 (757) 253-0040
 Fax (757) 220-8994

PLAT OF CONDOMINIUM
WILLIAMSBURG VILLAGE AT NORGE CONDOMINIUM
 PHASE 12, UNIT #12
 2 Large/Small Plat(s) Recorded
 herewith as # 050030377

STONEHOUSE DISTRICT COUNTY OF JAMES CITY VIRGINIA

COMMONWEALTH OF VIRGINIA
ROBERT D. MANN
 NO. 002509
 12/12/05
 LAND SURVEYOR

No.	DATE	REVISION / COMMENT / NOTE	BY
City of Williamsburg & County of James City Circuit Court This PLAT was recorded on <u>21 December 2005</u> at <u>12:51</u> AM/PM, FB _____ PG _____ DOCUMENT # <u>050030377</u> BETSY B. WOOLRIDGE, CLERK <u>Betsy Woolridge</u> Clerk			

Designed VMB/JAG	Drawn AWT
Scale 1"=40'	Date 12/12/05
Project No. 9286-2	
Drawing No. 2 of 2	