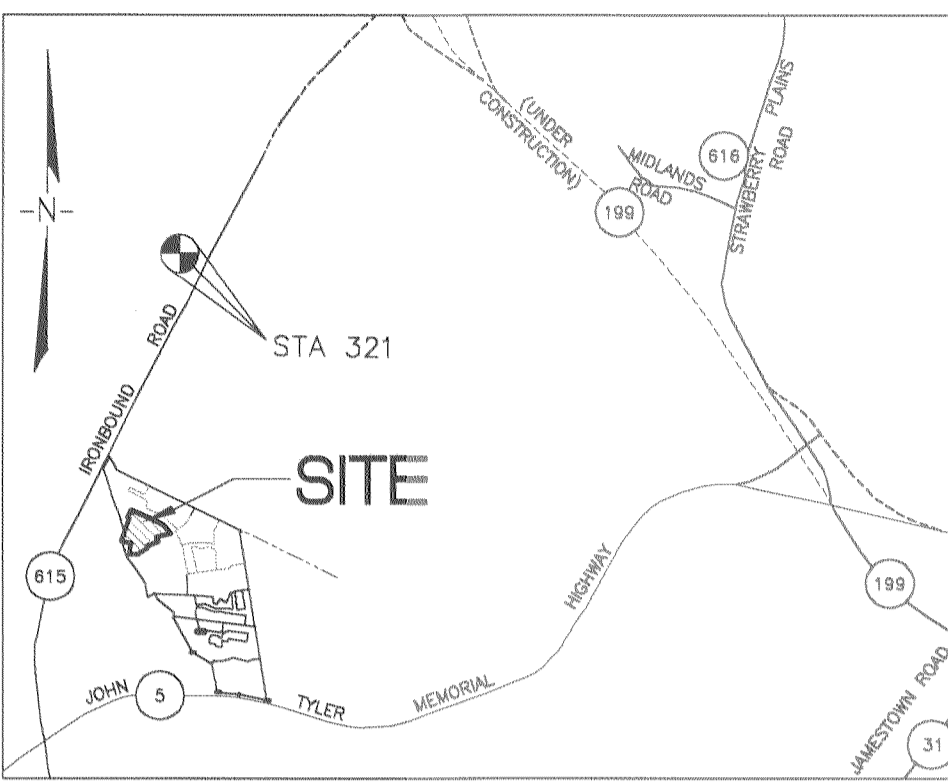
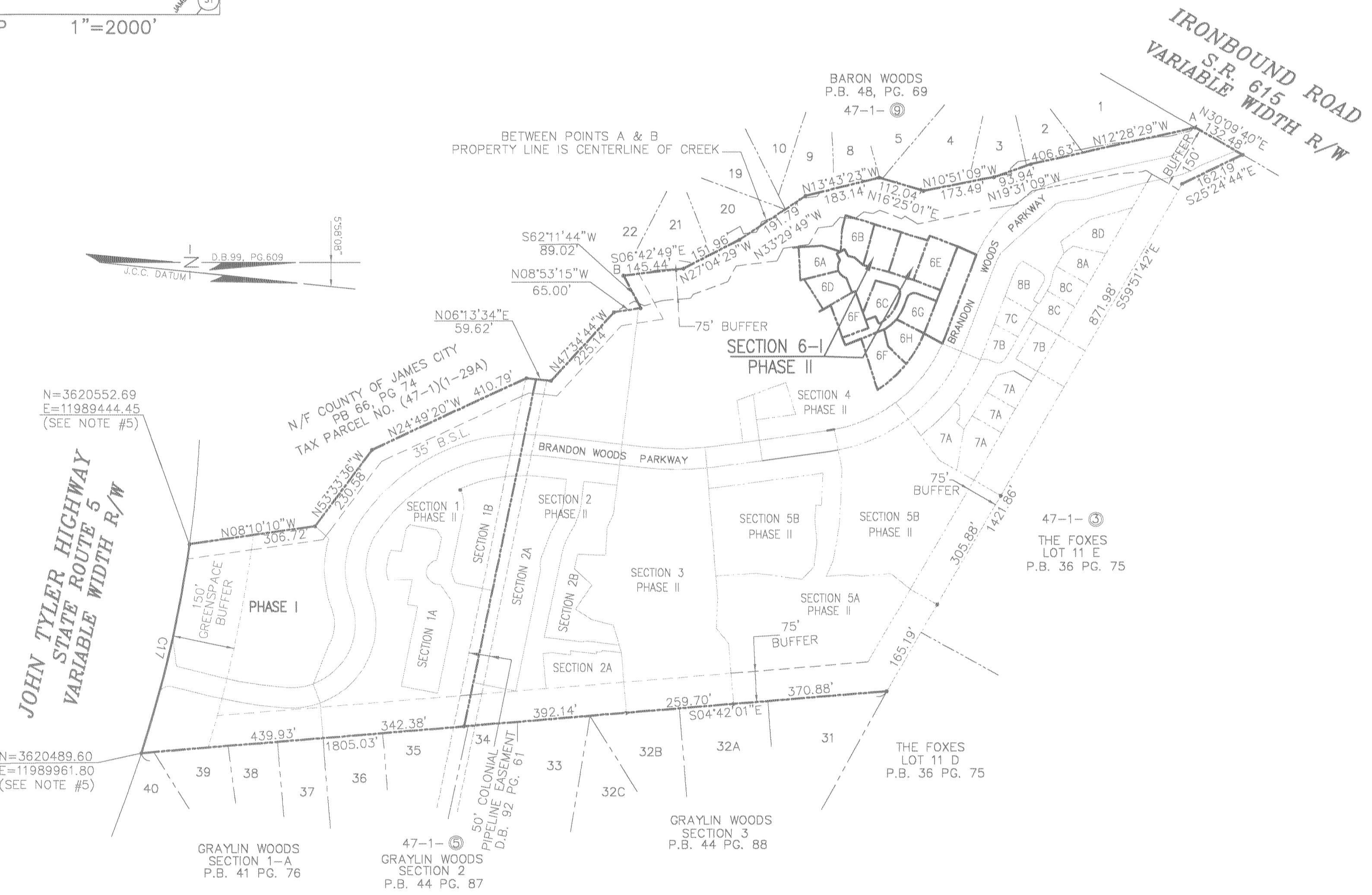


#050029103



VICINITY MAP 1"=2000'



N=3620552.69
E=11989444.45
(SEE NOTE #5)

N=3620489.60
E=11989961.80
(SEE NOTE #5)

N/F COUNTY OF JAMES CITY
PB 66, PG 74
TAX PARCEL NO. (47-1)(1-29A)

BARON WOODS
P.B. 48, PG. 69
47-1-③

47-1-③
THE FOXES
LOT 11 E
P.B. 36 PG. 75

47-1-③
THE FOXES
LOT 11 D
P.B. 36 PG. 75

GRAYLIN WOODS
SECTION 3
P.B. 44 PG. 88

47-1-⑤
GRAYLIN WOODS
SECTION 2
P.B. 44 PG. 87

GRAYLIN WOODS
SECTION 1-A
P.B. 41 PG. 76

CONDOMINIUM PLAT
OF
SECTION 6-I
(A PORTION OF PHASE II)
BRANDON WOODS

JAMES CITY COUNTY, VIRGINIA
SCALE: 1"=200' DATE: 12/06/05

SHEET 1 OF 4

**LANDMARK
DESIGN GROUP**

Engineers • Planners • Surveyors
Landscape Architects • Environmental Consultants
4029 IRONBOUND ROAD SUITE 100
WILLIAMSBURG, VA 23188
TEL (757) 253-2975 FAX(757) 229-0049



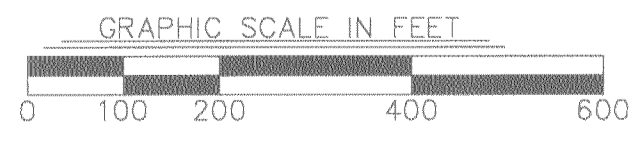
STATE OF VIRGINIA, COUNTY OF JAMES CITY

IN THE CLERK'S OFFICE OF THE CIRCUIT COURT THE PLAT
SHOWN HEREON WAS PRESENTED AND ADMITTED TO RECORD
Dec 8, 2005 at 2:10 p.m. AS THE LAW DIRECTS.

TESTEE: Lee Ann Hallman Dep. CLERK

DOCUMENT NO. 050029103

4 Large/Small Plat(s) Recorded
herewith as # 050029103



GETSY & WOOLRIDGE, CLERK

DRAWN BY: PF
CHKD BY: AST

PROJ. NO.: 1980074-000.62
DWG NO.: 1672RW