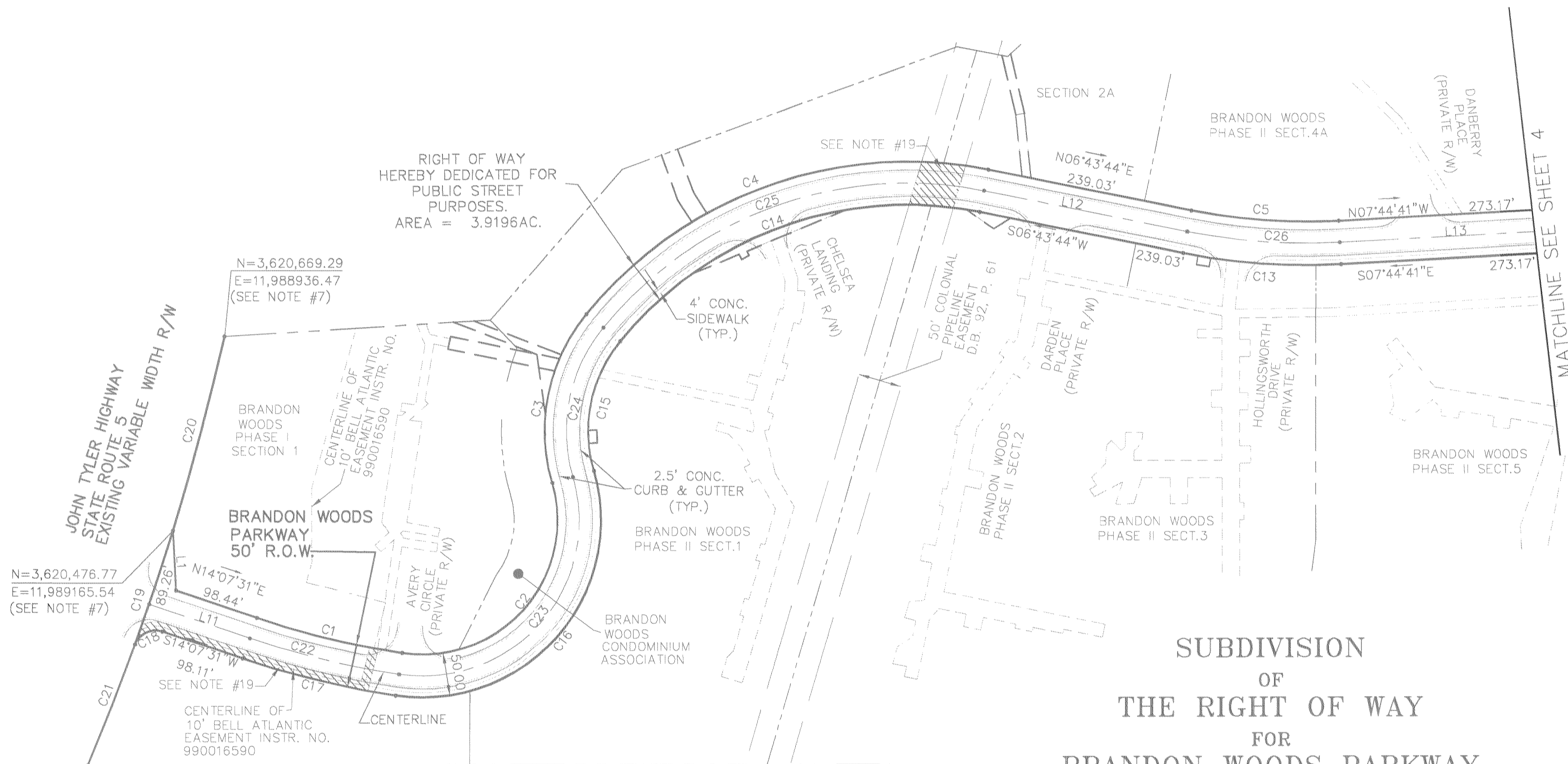
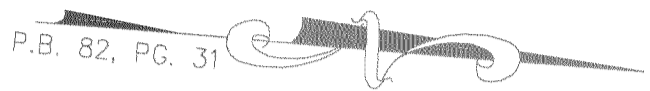
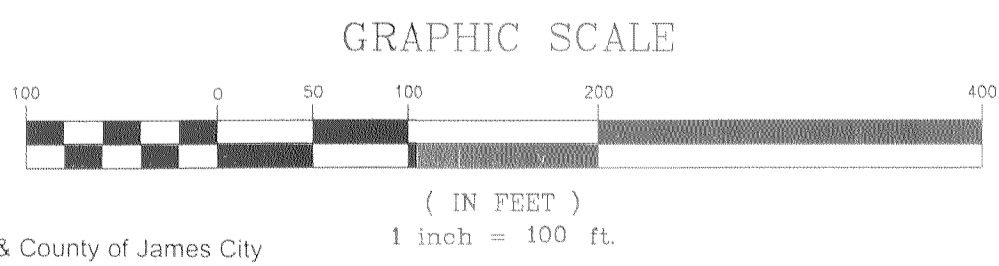


P.B. 82, PG. 31



SUBDIVISION  
OF  
THE RIGHT OF WAY  
FOR  
BRANDON WOODS PARKWAY

BEING THE PROPERTY OF  
BRANDON WOODS, LP  
BERKELEY DISTRICT, JAMES CITY COUNTY, VIRGINIA  
DATE: OCTOBER 15, 2003 SCALE: 1"=100'  
REVISED: NOV. 17, 2004  
REVISED: JAN. 17, 2005  
REVISED: AUG. 9, 2005  
SHEET 3 OF 6



City of Williamsburg & County of James City  
Circuit Court: This PLAT was recorded on  
at 9:59 AM on 12-8-2005 PG. 31  
DOCUMENT # 050029043  
BETSY B. WOOLRIDGE, CLERK

6 Large Plat(s) Recorded  
herewith as # 050029043

SEE SHEETS 5 AND SIX  
FOR EASEMENT DETAILS



**LANDMARK**  
DESIGN GROUP  
Engineers • Planners • Surveyors  
Landscape Architects • Environmental Consultants

4029 Ironbound Road  
Suite 100  
Williamsburg, VA 23188  
Tel. (757) 253-2975  
Fax (757) 229-0049  
Email: lmdg@landmarkdg.com

5544 Greenwich Road  
Suite 200  
Virginia Beach, VA 23462  
Tel. (757) 473-2000  
Fax (757) 497-7933  
Email: lmdg@landmarkdg.com

1980074-000.64 :brandon woods row-dedication plat-(row-plat.dwg)