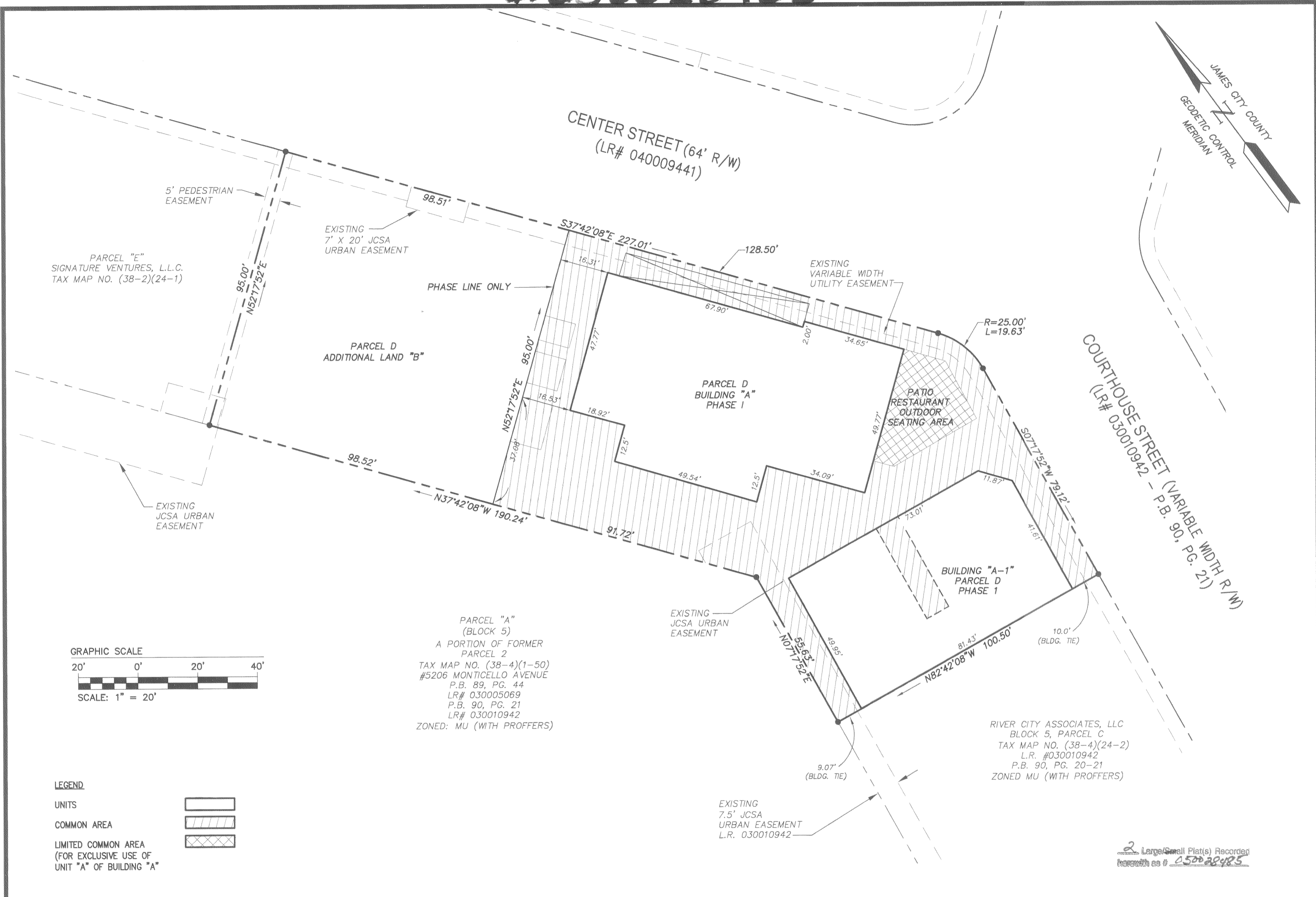
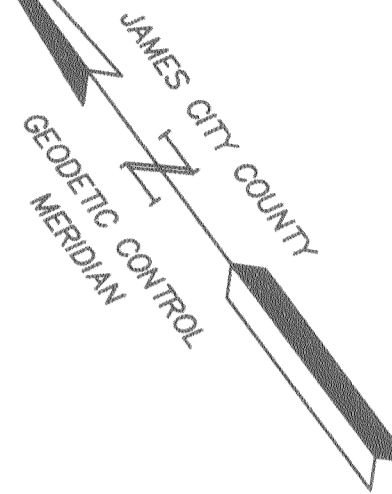


#050028485



PARCEL "E"
SIGNATURE VENTURES, L.L.C.
TAX MAP NO. (38-2)(24-1)

PARCEL D
ADDITIONAL LAND "B"

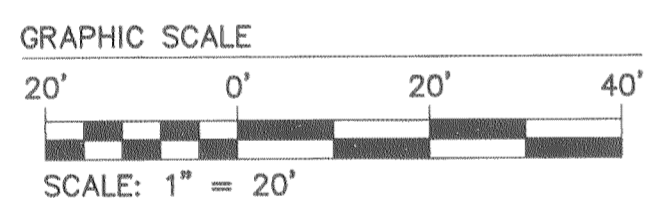
PARCEL D
BUILDING "A"
PHASE I

PATIO
RESTAURANT
OUTDOOR
SEATING AREA

BUILDING "A-1"
PARCEL D
PHASE 1

PARCEL "A"
(BLOCK 5)
A PORTION OF FORMER
PARCEL 2
TAX MAP NO. (38-4)(1-50)
#5206 MONTICELLO AVENUE
P.B. 89, PG. 44
LR# 030005069
P.B. 90, PG. 21
LR# 030010942
ZONED: MU (WITH PROFFERS)

RIVER CITY ASSOCIATES, LLC
BLOCK 5, PARCEL C
TAX MAP NO. (38-4)(24-2)
L.R. #030010942
P.B. 90, PG. 20-21
ZONED MU (WITH PROFFERS)

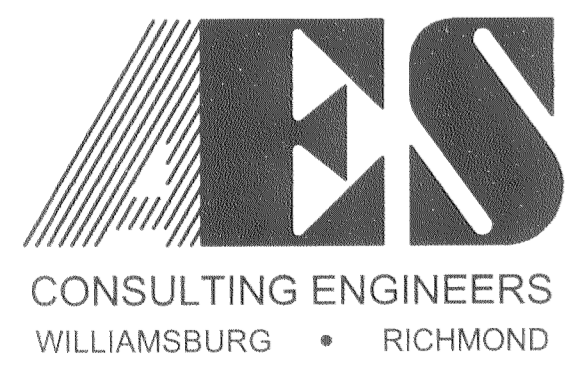


LEGEND

- UNITS
- COMMON AREA
- LIMITED COMMON AREA
(FOR EXCLUSIVE USE OF
UNIT "A" OF BUILDING "A")

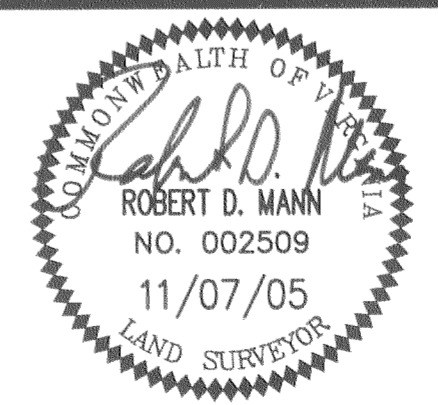
2 Large/Small Plat(s) Recorded
Record # 050028485

S:\Jobs\6632\E10-3 Bldg5 Mixed Use Bldgs\dwg\Plats\CONDOMINIUM\Phase 1-Bldg A and A-1\6632E103CONDOPH1p02.DWG, 11/8/2005 7:55:11 AM, RDM
S:\Jobs\6632\E10-3 Bldg5 Mixed Use Bldgs\dwg\Plats\CONDOMINIUM\Phase 1-Bldg A and A-1\6632E103CONDOPH1p02.DWG 10/25/2005 5:40:49 PM EST



5248 Olde Towne Road, Suite 1
Williamsburg, Virginia 23188
(757) 253-0040
Fax (757) 220-8994

EXHIBIT B
PLAT OF CONDOMINIUM
OF
**NEW TOWN CENTER STREET CONDOMINIUMS
PHASE 1**
BERKELEY DISTRICT JAMES CITY COUNTY VIRGINIA



City of Williamsburg & County of James City		Circuit Court: This PLAT was recorded on	
		11/09 December 2005	
at 11:09 AM/PM, PB - PG -			
DOCUMENT # 050028485			
BETSY B. WOOLRIDGE, CLERK			
Betsy B. Woolridge Clerk			
1	11/7/05	REMOVED UNIT NUMBERS	RDM
No.	DATE	REVISION / COMMENT / NOTE	BY

Designed AES	Drawn JFS
Scale 1"=20'	Date 10/24/05
Project No. 6632-E-10-3	
Drawing No. 2 OF 2	