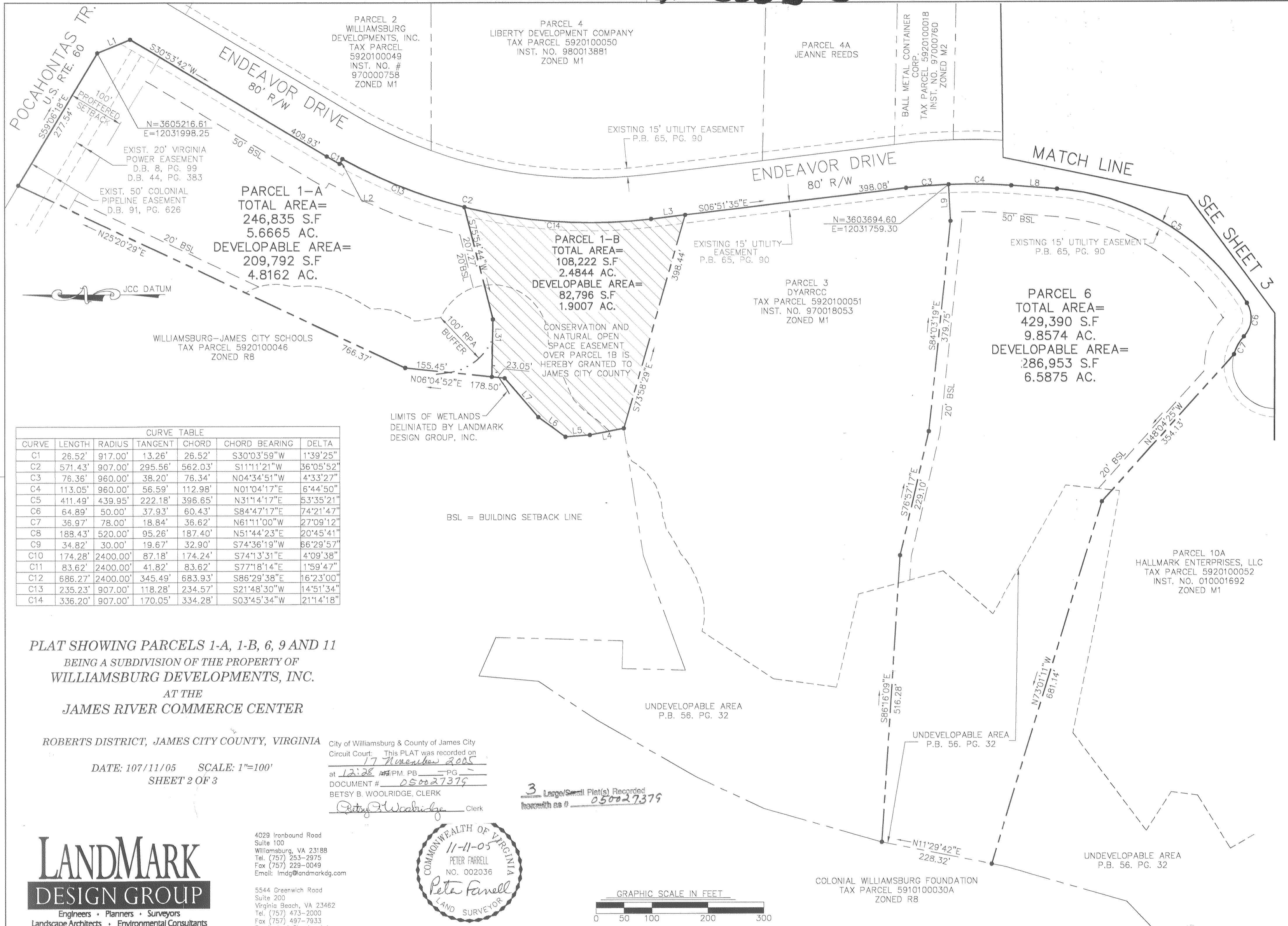


#050027379



PARCEL 1-A  
TOTAL AREA=  
246,835 S.F  
5.6665 AC.  
DEVELOPABLE AREA=  
209,792 S.F  
4.8162 AC.

PARCEL 1-B  
TOTAL AREA=  
108,222 S.F  
2.4844 AC.  
DEVELOPABLE AREA=  
82,796 S.F  
1.9007 AC.

PARCEL 6  
TOTAL AREA=  
429,390 S.F  
9.8574 AC.  
DEVELOPABLE AREA=  
286,953 S.F  
6.5875 AC.

CURVE	LENGTH	RADIUS	TANGENT	CHORD	CHORD BEARING	DELTA
C1	26.52'	917.00'	13.26'	26.52'	S30°03'59"W	1°39'25"
C2	571.43'	907.00'	295.56'	562.03'	S11°11'21"W	36°05'52"
C3	76.36'	960.00'	38.20'	76.34'	N04°34'51"W	4°33'27"
C4	113.05'	960.00'	56.59'	112.98'	N01°04'17"E	6°44'50"
C5	411.49'	439.95'	222.18'	396.65'	N31°14'17"E	53°35'21"
C6	64.89'	50.00'	37.93'	60.43'	S84°47'17"E	74°21'47"
C7	36.97'	78.00'	18.84'	36.62'	N61°11'00"W	27°09'12"
C8	188.43'	520.00'	95.26'	187.40'	N51°44'23"E	20°45'41"
C9	34.82'	30.00'	19.67'	32.90'	S74°36'19"W	66°29'57"
C10	174.28'	2400.00'	87.18'	174.24'	S74°13'31"E	4°09'38"
C11	83.62'	2400.00'	41.82'	83.62'	S77°18'14"E	1°59'47"
C12	686.27'	2400.00'	345.49'	683.93'	S86°29'38"E	16°23'00"
C13	235.23'	907.00'	118.28'	234.57'	S21°48'30"W	14°51'34"
C14	336.20'	907.00'	170.05'	334.28'	S03°45'34"W	21°14'18"

BSL = BUILDING SETBACK LINE

PLAT SHOWING PARCELS 1-A, 1-B, 6, 9 AND 11  
BEING A SUBDIVISION OF THE PROPERTY OF  
WILLIAMSBURG DEVELOPMENTS, INC.  
AT THE  
JAMES RIVER COMMERCE CENTER

ROBERTS DISTRICT, JAMES CITY COUNTY, VIRGINIA

DATE: 107/11/05 SCALE: 1"=100'  
SHEET 2 OF 3

City of Williamsburg & County of James City  
Circuit Court: This PLAT was recorded on  
17 November 2005  
at 12:28 AM/PM, PB PG  
DOCUMENT # 050027379  
BETSY B. WOOLRIDGE, CLERK  
Betsy B. Woolridge Clerk

3 Large/Small Plat(s) Recorded  
herewith as # 050027379



**LANDMARK DESIGN GROUP**  
Engineers • Planners • Surveyors  
Landscape Architects • Environmental Consultants

4029 Ironbound Road  
Suite 100  
Williamsburg, VA 23188  
Tel. (757) 253-2975  
Fax (757) 229-0049  
Email: lmdg@landmarkdg.com

5544 Greenwich Road  
Suite 200  
Virginia Beach, VA 23462  
Tel. (757) 473-2000  
Fax (757) 497-7933  
Email: lmdg@landmarkdg.com

