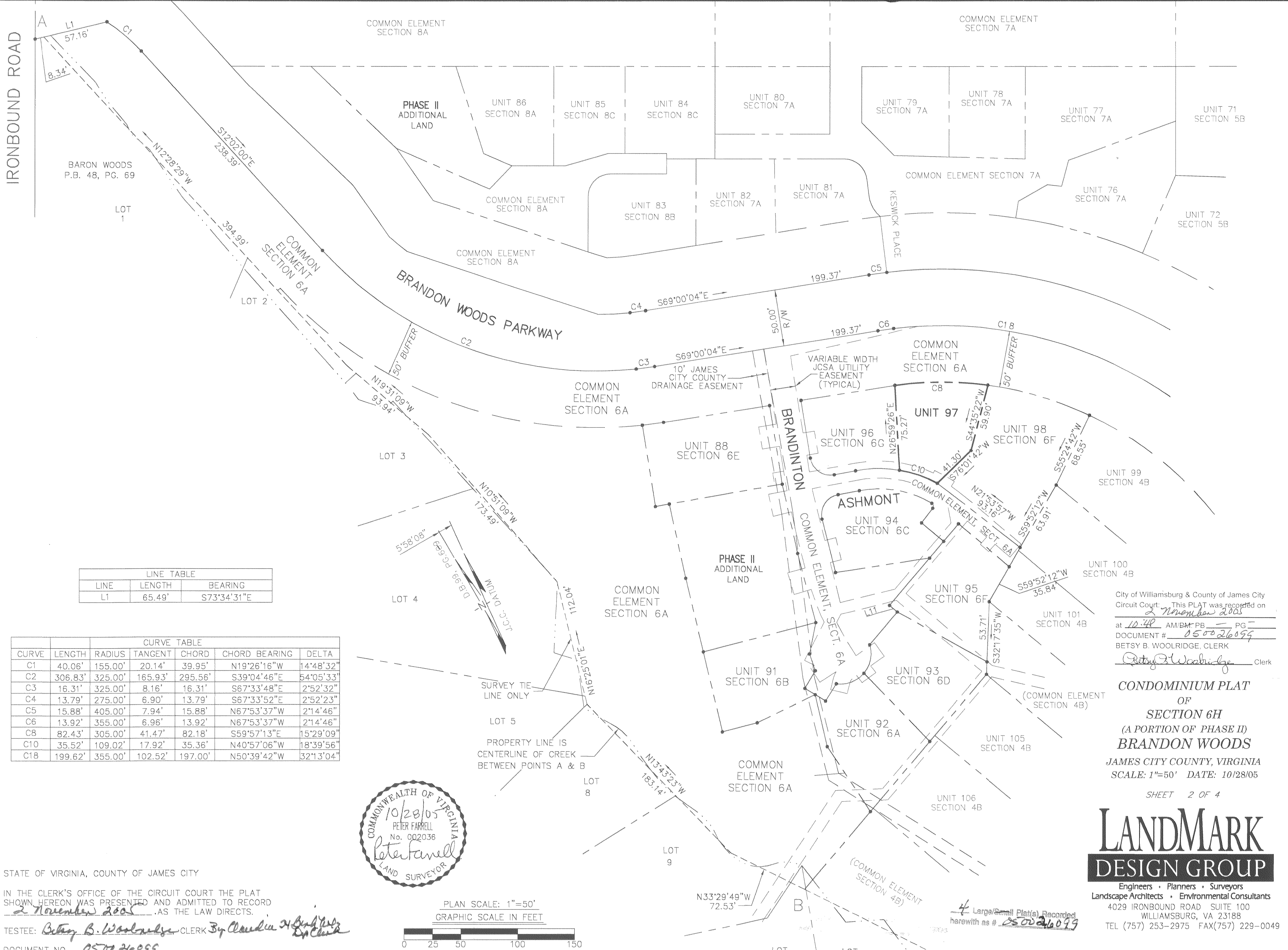


#050026099

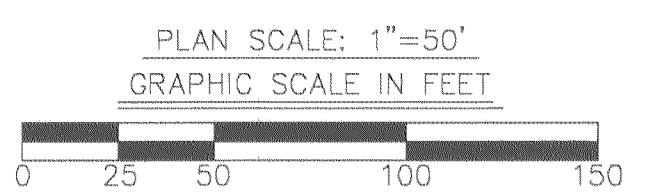


LINE TABLE		
LINE	LENGTH	BEARING
L1	65.49'	S73°34'31"E

CURVE TABLE						
CURVE	LENGTH	RADIUS	TANGENT	CHORD	CHORD BEARING	DELTA
C1	40.06'	155.00'	20.14'	39.95'	N19°26'16"W	14°48'32"
C2	306.83'	325.00'	165.93'	295.56'	S39°04'46"E	54°05'33"
C3	16.31'	325.00'	8.16'	16.31'	S67°33'48"E	2°52'32"
C4	13.79'	275.00'	6.90'	13.79'	S67°33'52"E	2°52'23"
C5	15.88'	405.00'	7.94'	15.88'	N67°53'37"W	2°14'46"
C6	13.92'	355.00'	6.96'	13.92'	N67°53'37"W	2°14'46"
C8	82.43'	305.00'	41.47'	82.18'	S59°57'13"E	15°29'09"
C10	35.52'	109.02'	17.92'	35.36'	N40°57'06"W	18°39'56"
C18	199.62'	355.00'	102.52'	197.00'	N50°39'42"W	32°13'04"



STATE OF VIRGINIA, COUNTY OF JAMES CITY
 IN THE CLERK'S OFFICE OF THE CIRCUIT COURT THE PLAT SHOWN HEREON WAS PRESENTED AND ADMITTED TO RECORD 2 November 2005 AS THE LAW DIRECTS.
 TESTEE: Betsy B. Woolridge CLERK By Claudia H. ...
 DOCUMENT NO. 050026099



City of Williamsburg & County of James City Circuit Court: This PLAT was recorded on 2 November 2005 at 10:48 AM/PM PB 1 PG 1 DOCUMENT # 050026099 BETSY B. WOOLRIDGE, CLERK
Betsy B. Woolridge Clerk

CONDOMINIUM PLAT
 OF
SECTION 6H
 (A PORTION OF PHASE II)
BRANDON WOODS
 JAMES CITY COUNTY, VIRGINIA
 SCALE: 1"=50' DATE: 10/28/05
 SHEET 2 OF 4

LANDMARK DESIGN GROUP
 Engineers • Planners • Surveyors
 Landscape Architects • Environmental Consultants
 4029 IRONBOUND ROAD SUITE 100
 WILLIAMSBURG, VA 23188
 TEL (757) 253-2975 FAX(757) 229-0049

DRAWN BY: PF PROJ. NO.: 1980074-000.62
 CHKD BY: AST DWG. NO.: 16624W