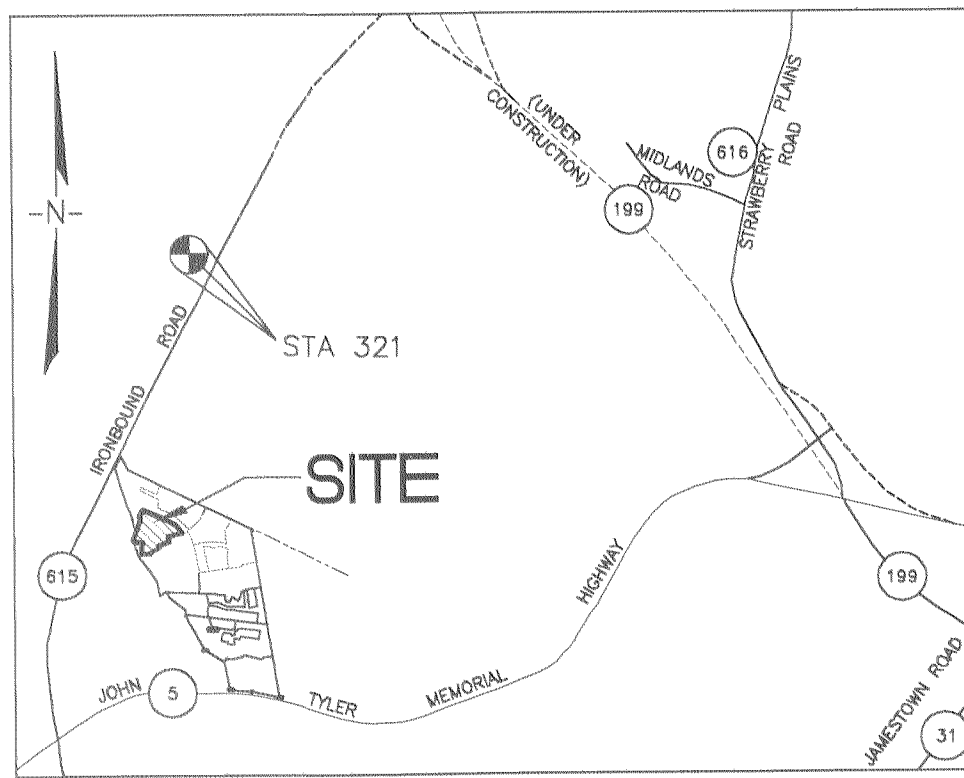
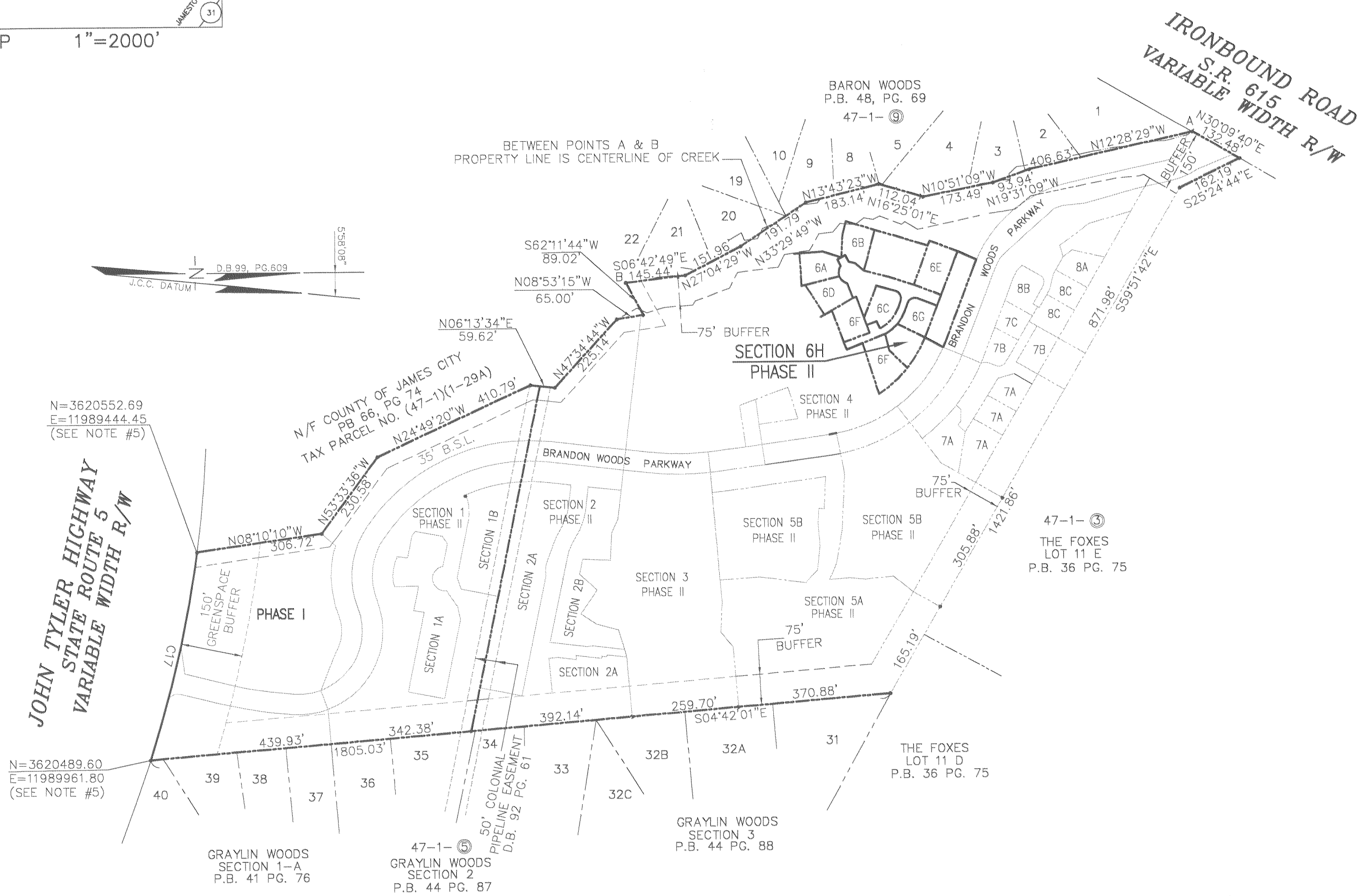


#050026099



VICINITY MAP 1"=2000'



JOHN TYLER HIGHWAY  
STATE ROUTE 5  
VARIABLE WIDTH R/W

N=3620489.60  
E=11989961.80  
(SEE NOTE #5)

N=3620552.69  
E=11989444.45  
(SEE NOTE #5)

N/F COUNTY OF JAMES CITY  
PB 66, PG 74  
TAX PARCEL NO. (47-1)(1-29A)

BARON WOODS  
P.B. 48, PG. 69

47-1-5  
THE FOXES  
LOT 11 E  
P.B. 36 PG. 75

THE FOXES  
LOT 11 D  
P.B. 36 PG. 75

GRAYLIN WOODS  
SECTION 3  
P.B. 44 PG. 88

GRAYLIN WOODS  
SECTION 1-A  
P.B. 41 PG. 76

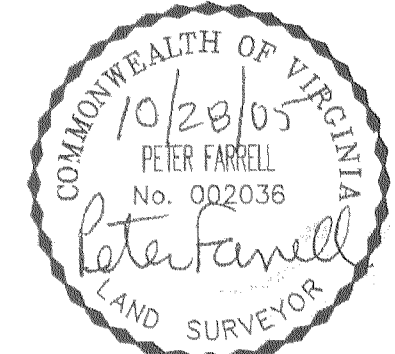
47-1-5  
GRAYLIN WOODS  
SECTION 2  
P.B. 44 PG. 87

GRAPHIC SCALE IN FEET



4 Large Plats Recorded  
herewith as # 050026099

City of Williamsburg & County of James City  
Circuit Court. This PLAT was recorded on  
2 November 2005  
at 10:48 AM/PMT. PB PG  
DOCUMENT # 050026099  
BETSY B. WOOLRIDGE, CLERK



CONDOMINIUM PLAT  
OF  
SECTION 6H  
(A PORTION OF PHASE II)  
BRANDON WOODS  
JAMES CITY COUNTY, VIRGINIA  
SCALE: 1"=200' DATE: 10/28/05

SHEET 1 OF 4

**LANDMARK**  
**DESIGN GROUP**  
Engineers • Planners • Surveyors  
Landscape Architects • Environmental Consultants  
4029 IRONBOUND ROAD SUITE 100  
WILLIAMSBURG, VA 23188  
TEL (757) 253-2975 FAX(757) 229-0049

STATE OF VIRGINIA, COUNTY OF JAMES CITY

IN THE CLERK'S OFFICE OF THE CIRCUIT COURT THE PLAT  
SHOWN HEREON WAS PRESENTED AND ADMITTED TO RECORD  
2 November 2005 AS THE LAW DIRECTS.

TESTEE: *Betsy B. Woolridge* CLERK *Betsy B. Woolridge*  
DOCUMENT NO. 050026099