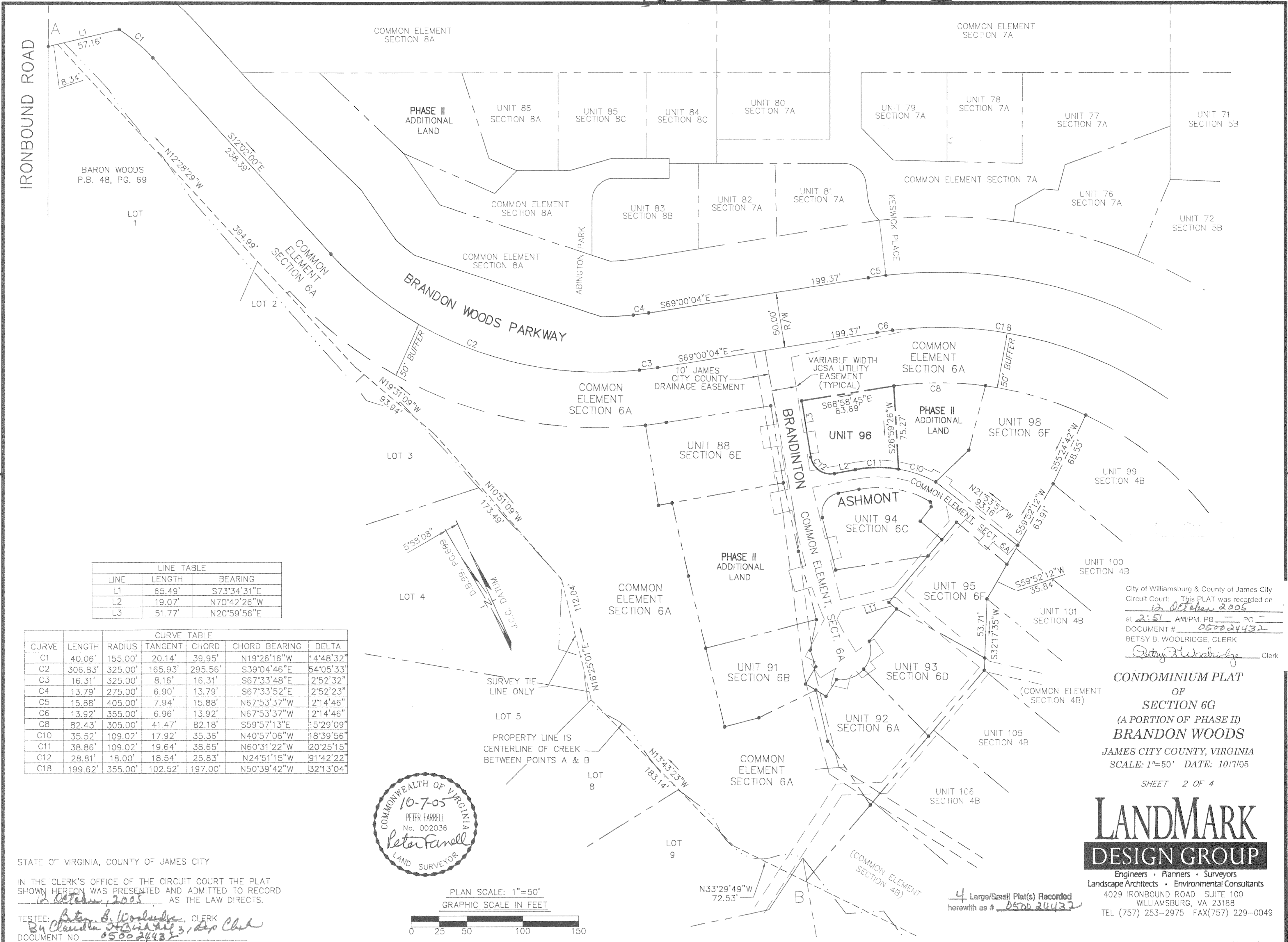
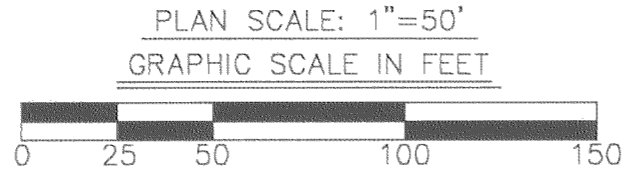


# #050024432



LINE TABLE		
LINE	LENGTH	BEARING
L1	65.49'	S73°34'31\"E
L2	19.07'	N70°42'26\"W
L3	51.77'	N20°59'56\"E

CURVE TABLE						
CURVE	LENGTH	RADIUS	TANGENT	CHORD	CHORD BEARING	DELTA
C1	40.06'	155.00'	20.14'	39.95'	N19°26'16\"W	14°48'32\"
C2	306.83'	325.00'	165.93'	295.56'	S39°04'46\"E	54°05'33\"
C3	16.31'	325.00'	8.16'	16.31'	S67°33'48\"E	2°52'32\"
C4	13.79'	275.00'	6.90'	13.79'	S67°33'52\"E	2°52'23\"
C5	15.88'	405.00'	7.94'	15.88'	N67°53'37\"W	2°14'46\"
C6	13.92'	355.00'	6.96'	13.92'	N67°53'37\"W	2°14'46\"
C8	82.43'	305.00'	41.47'	82.18'	S59°57'13\"E	15°29'09\"
C10	35.52'	109.02'	17.92'	35.36'	N40°57'06\"W	18°39'56\"
C11	38.86'	109.02'	19.64'	38.65'	N60°31'22\"W	20°25'15\"
C12	28.81'	18.00'	18.54'	25.83'	N24°51'15\"W	91°42'22\"
C18	199.62'	355.00'	102.52'	197.00'	N50°39'42\"W	32°13'04\"



City of Williamsburg & County of James City  
 Circuit Court: This PLAT was recorded on  
12 October 2005  
 at 2:51 AM/PM, PG. 4  
 DOCUMENT # 050024432  
 BETSY B. WOOLRIDGE, CLERK  
*Betsy B. Woolridge* Clerk

**CONDOMINIUM PLAT**  
 OF  
**SECTION 6G**  
 (A PORTION OF PHASE II)  
**BRANDON WOODS**  
 JAMES CITY COUNTY, VIRGINIA  
 SCALE: 1"=50' DATE: 10/7/05

SHEET 2 OF 4



Engineers • Planners • Surveyors  
 Landscape Architects • Environmental Consultants  
 4029 IRONBOUND ROAD SUITE 100  
 WILLIAMSBURG, VA 23188  
 TEL (757) 253-2975 FAX(757) 229-0049

STATE OF VIRGINIA, COUNTY OF JAMES CITY  
 IN THE CLERK'S OFFICE OF THE CIRCUIT COURT THE PLAT  
 SHOWN HEREON WAS PRESENTED AND ADMITTED TO RECORD  
12 October, 2005 AS THE LAW DIRECTS.  
 TESTEE: *Betsy B. Woolridge*, CLERK  
 By *Claudia H. Smith*, 31209 Clerk  
 DOCUMENT NO. 050024432

4 Large/Small Plat(s) Recorded  
 herewith as # 050024432