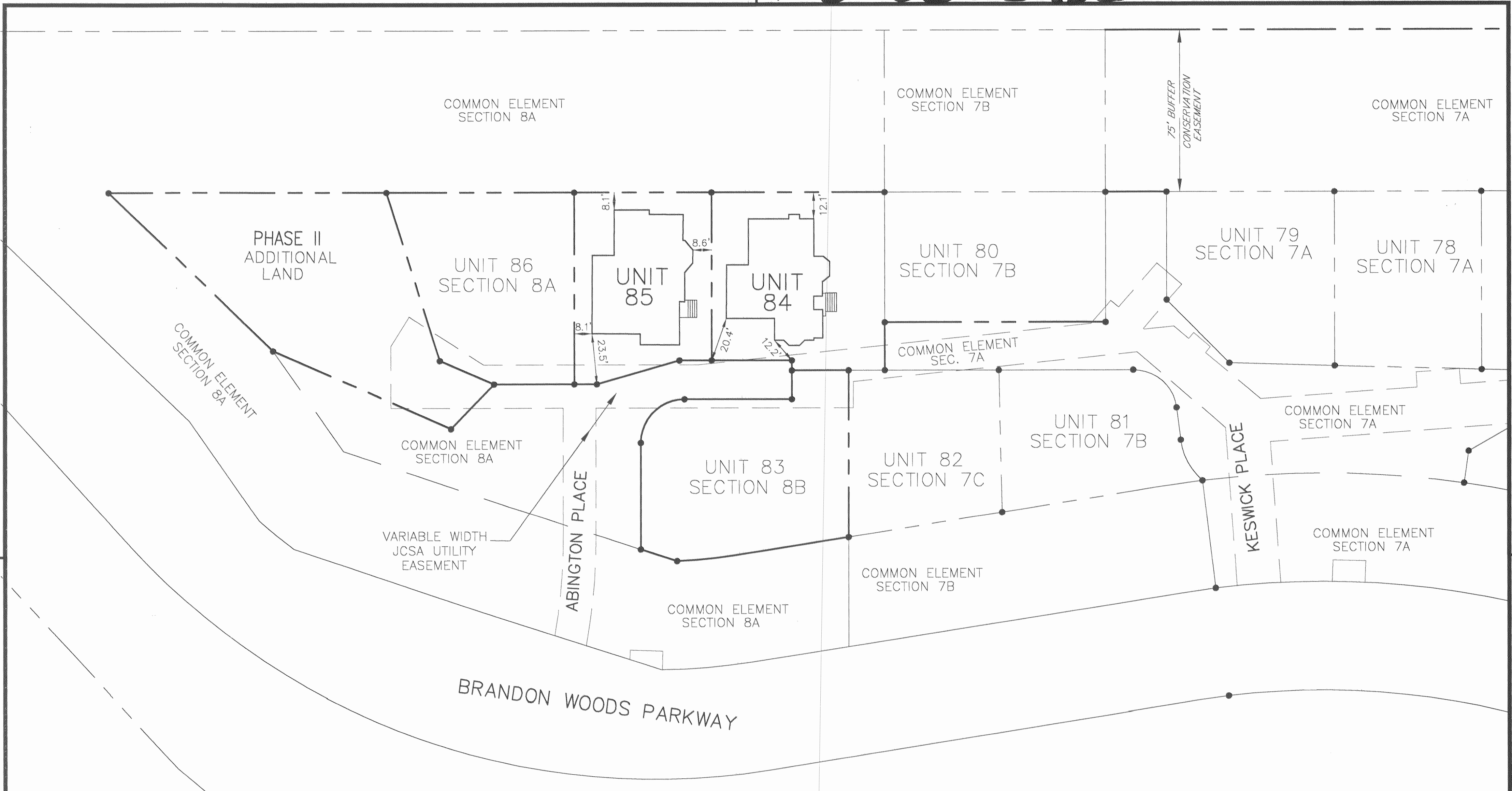


#050023432



CONDOMINIUM PLAT
 OF
 SECTION 8C
 (A PORTION OF PHASE II)
 BRANDON WOODS
 JAMES CITY COUNTY, VIRGINIA
 SCALE: 1"=30' DATE: 9/22/05
 SHEET 3 OF 4

STATE OF VIRGINIA, COUNTY OF JAMES CITY
 IN THE CLERK'S OFFICE OF THE CIRCUIT COURT THE PLAT
 SHOWN HEREON WAS PRESENTED AND ADMITTED TO RECORD
 AS THE LAW DIRECTS.
 TESTEE: _____, CLERK
 DOCUMENT NO. _____

City of Williamsburg & County of James City
 Circuit Court. This PLAT was recorded on
 30 September 2005
 at 10:26 AM/PM, PG _____
 DOCUMENT # 050023432
 BETSY B. WOOLRIDGE, CLERK
 Betsy B. Woolridge Clerk

4 Large/Small Plat(s) Recorded
 herewith as # 050023432
 PLAN SCALE: 1"=30'
 GRAPHIC SCALE IN FEET
 0 15 30 60 90



LANDMARK
DESIGN GROUP
 Engineers • Planners • Surveyors
 Landscape Architects • Environmental Consultants
 4029 IRONBOUND ROAD SUITE 100
 WILLIAMSBURG, VA 23188
 TEL (757) 253-2975 FAX(757) 229-0049

DRAWN BY: PF PROJ. NO.: 1980074-000.73
 CHKD BY: AST DWG. NO.: 16477W