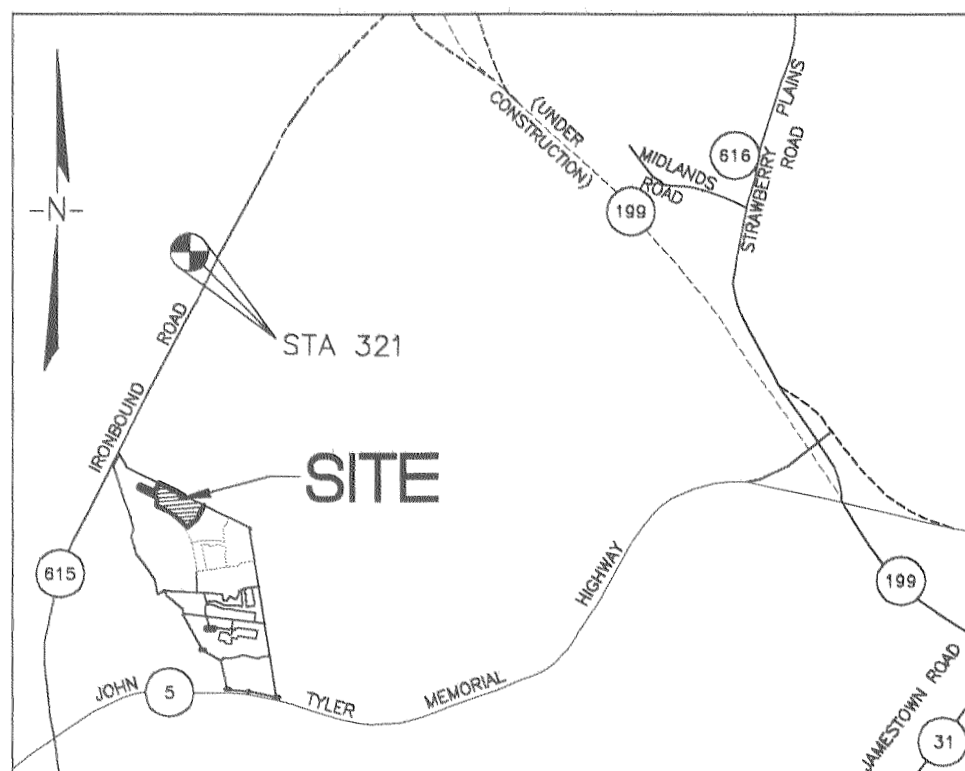
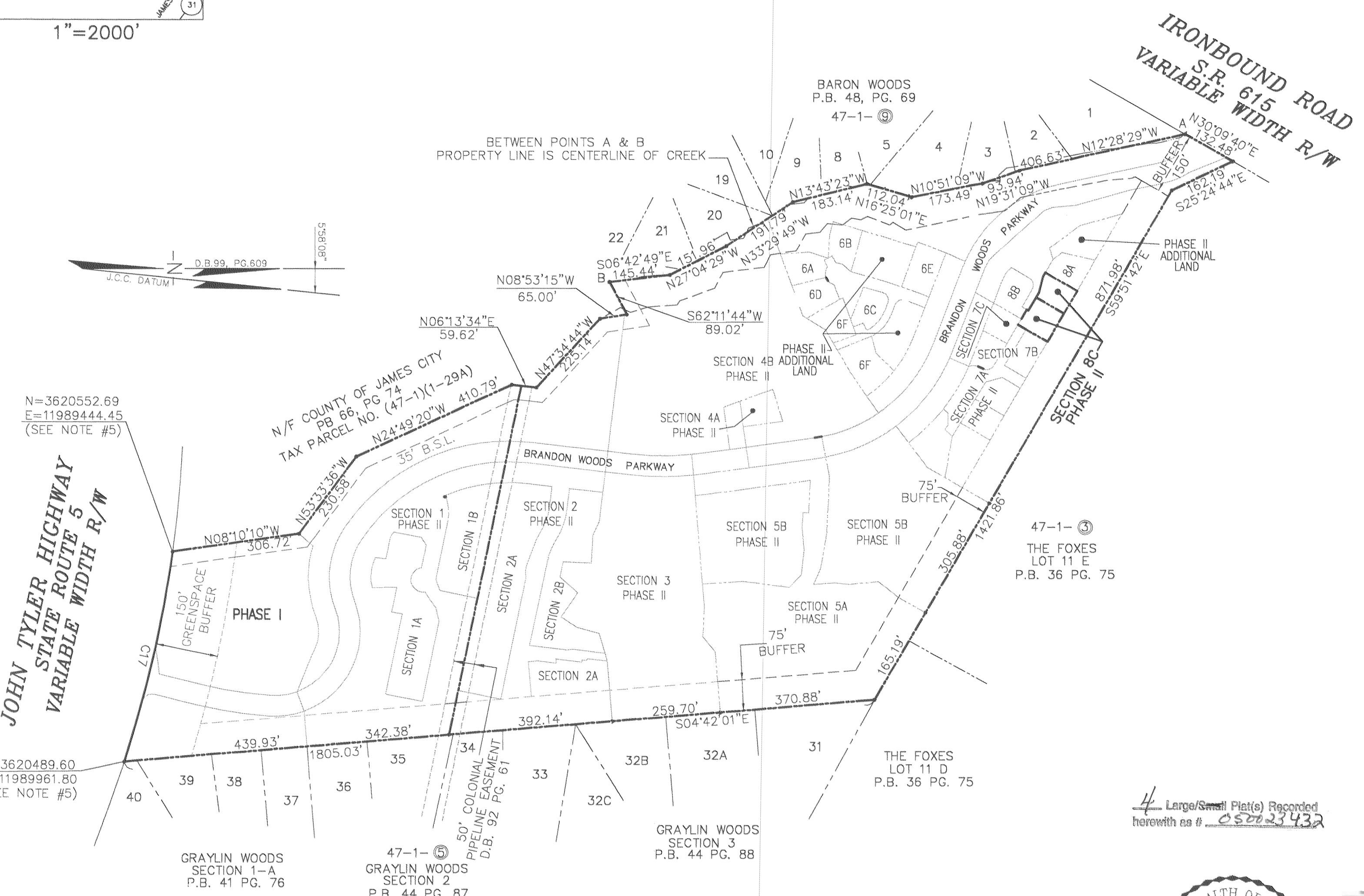


# 050023432



VICINITY MAP 1"=2000'

INSTRUMENT NO. 98000030



N=3620552.69  
E=11989444.45  
(SEE NOTE #5)

JOHN TYLER HIGHWAY  
STATE ROUTE 5  
VARIABLE WIDTH R/W

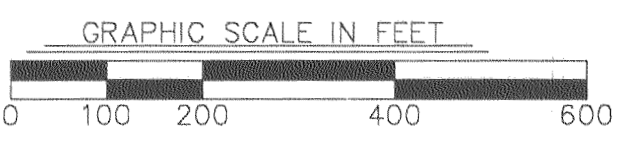
N=3620489.60  
E=11989961.80  
(SEE NOTE #5)

STATE OF VIRGINIA, COUNTY OF JAMES CITY

IN THE CLERK'S OFFICE OF THE CIRCUIT COURT THE PLAT SHOWN HEREON WAS PRESENTED AND ADMITTED TO RECORD AS THE LAW DIRECTS.

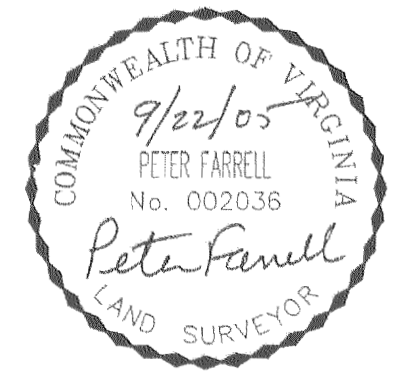
TESTEE: \_\_\_\_\_, CLERK

DOCUMENT NO. \_\_\_\_\_



City of Williamsburg & County of James City  
Circuit Court: This PLAT was recorded on  
30 September 2005  
at 10:26 AM PM PB \_\_\_\_\_ PG \_\_\_\_\_  
DOCUMENT # 050023432  
BETSY B. WOOLRIDGE, CLERK

Betsy B. Woolridge Clerk



CONDOMINIUM PLAT  
OF  
SECTION 8C  
(A PORTION OF PHASE II)  
BRANDON WOODS  
JAMES CITY COUNTY, VIRGINIA  
SCALE: 1"=200' DATE: 9/22/05

SHEET 1 OF 4



Landscape Architects • Environmental Consultants  
4029 IRONBOUND ROAD SUITE 100  
WILLIAMSBURG, VA 23188  
TEL (757) 253-2975 FAX(757) 229-0049

DRAWN BY: PF  
CHKD BY: AST

PROJ. NO.: 1980074-000.73  
DWG. NO.: 16479W