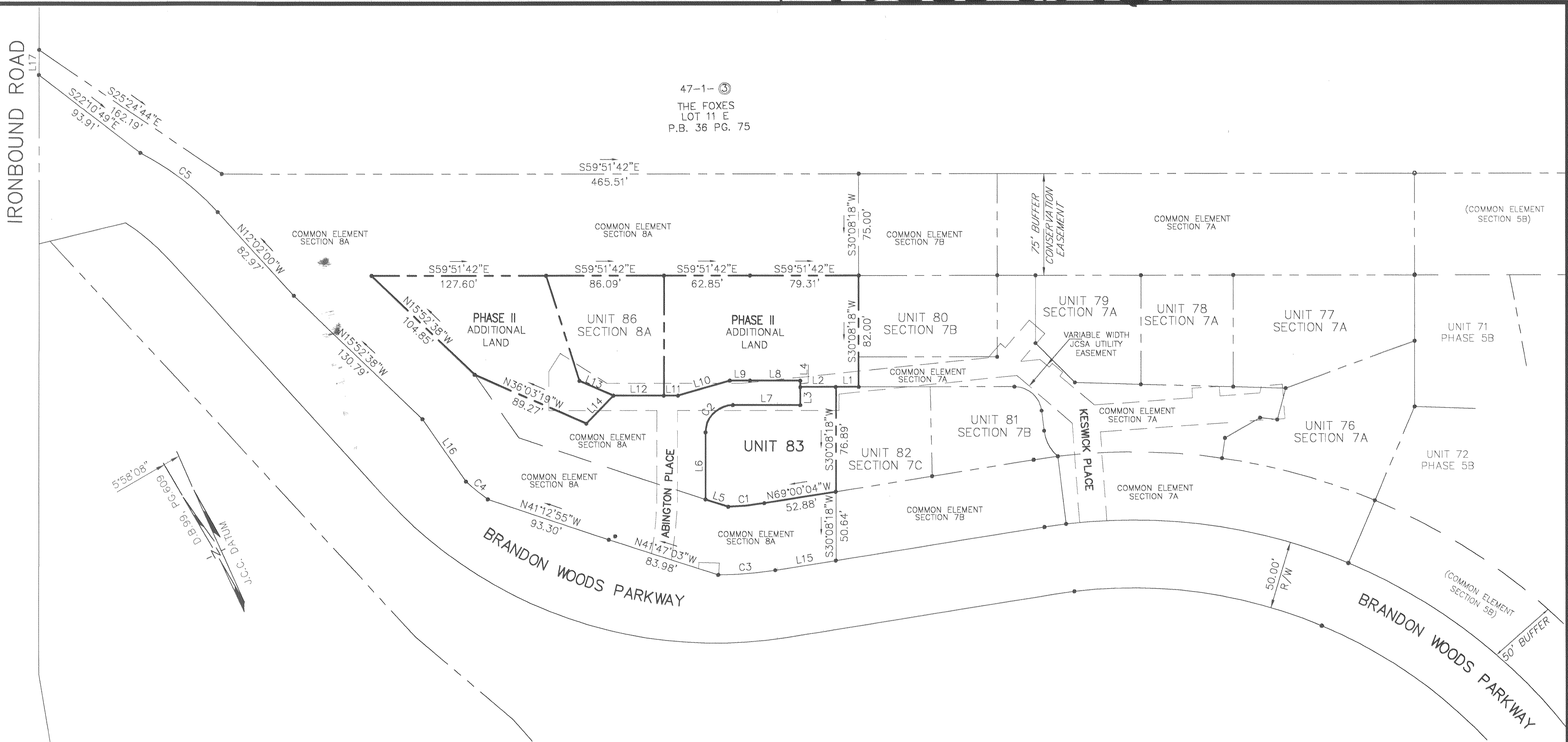
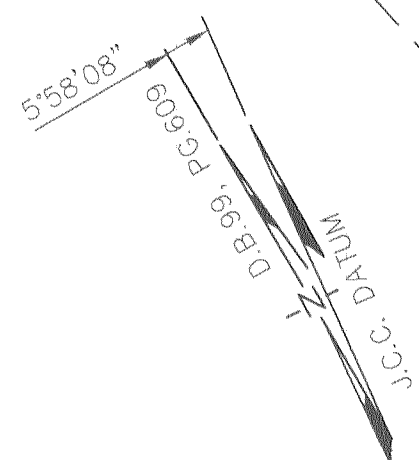


#050022761

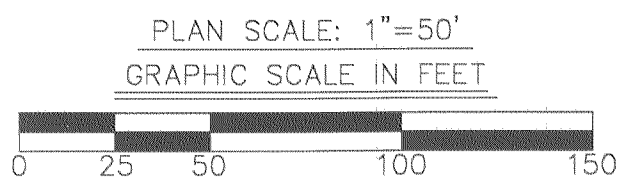


47-1-⑤
THE FOXES
LOT 11 E
P.B. 36 PG. 75



LINE TABLE		
LINE	LENGTH	BEARING
L1	16.64'	N59°51'42"W
L2	25.95'	S59°51'42"E
L3	13.33'	N30°08'18"E
L4	4.67'	N30°08'18"E
L5	17.48'	N41°47'03"W
L6	49.19'	N30°08'18"E
L7	49.19'	S59°51'42"E
L8	36.72'	N59°51'42"W
L9	14.74'	N59°51'42"W
L10	39.36'	N76°05'24"W
L11	10.31'	N59°51'42"W
L12	36.85'	N59°51'42"W
L13	27.14'	S36°11'58"E
L14	28.46'	N74°00'42"E
L15	44.84'	S69°00'04"E
L16	55.76'	N04°44'04"W
L17	18.52'	N30°48'37"E

CURVE TABLE						
CURVE	LENGTH	RADIUS	TANGENT	CHORD	CHORD BEARING	DELTA
C1	26.47'	225.00'	13.25'	26.45'	N65°37'52"W	6°44'24"
C2	31.42'	20.00'	20.00'	28.28'	N75°08'18"W	90°00'00"
C3	41.82'	275.00'	20.95'	41.78'	S64°38'41"E	8°42'46"
C4	20.66'	275.00'	10.34'	20.66'	S20°31'44"E	4°18'18"
C5	72.09'	205.00'	36.42'	71.72'	N22°06'28"W	20°08'56"



CONDOMINIUM PLAT
OF
SECTION 8B
(A PORTION OF PHASE II)
BRANDON WOODS
JAMES CITY COUNTY, VIRGINIA
SCALE: 1"=50' DATE: 9/19/05

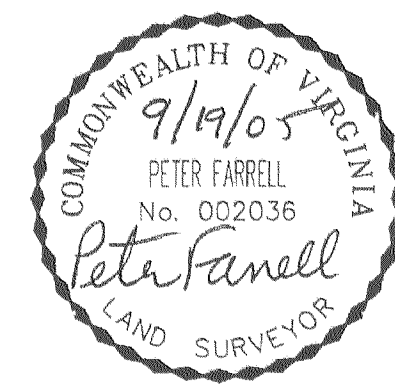
SHEET 2 OF 4

LANDMARK
DESIGN GROUP
Engineers • Planners • Surveyors
Landscape Architects • Environmental Consultants

4029 IRONBOUND ROAD SUITE 100
WILLIAMSBURG, VA 23188
TEL (757) 253-2975 FAX(757) 229-0049

4 Large/Small Plat(s) Recorded
herewith as # 050022761

City of Williamsburg & County of James City
Circuit Court: This PLAT was recorded on
23 September 2005
at 3:18 AM/PM, PG. _____
DOCUMENT # 050022761
BETSY B. WOOLRIDGE, CLERK
Betsy B. Woolridge Clerk



STATE OF VIRGINIA, COUNTY OF JAMES CITY
IN THE CLERK'S OFFICE OF THE CIRCUIT COURT THE PLAT
SHOWN HEREON WAS PRESENTED AND ADMITTED TO RECORD
23 September 2005 AS THE LAW DIRECTS.
TESTEE: Betsy B. Woolridge, Clerk Clerk
DOCUMENT NO. 050022761